



Cost estimation for the monitoring instrumentation of landslide early warning systems

Marta Sapena¹, Moritz Gamperl², Marlene Kühnl^{1,3}, Carolina Garcia-Londoño^{4,5}, John Singer⁶, and Hannes Taubenböck^{1,7}

¹German Remote Sensing Data Center (DFD), German Aerospace Center (DLR), 82234 Weßling, Germany

²Chair of Engineering Geology, Technical University of Munich, 80333 Munich, Germany

³Company for Remote Sensing and Environmental Research (SLU), 81243 Munich, Germany

⁴Institute for Landscape Architecture, Leibniz University Hanover, 30419 Hanover, Germany

⁵Geological Society of Colombia, 111321 Bogotá, Colombia

⁶AlpGeorisk, 86609 Donauwörth, Germany

⁷Institute for Geography and Geology, Julius-Maximilians-Universität Würzburg, 97074 Würzburg, Germany

Correspondence: Marta Sapena (marta.sapena-moll@dlr.de)

Received: 14 March 2023 – Discussion started: 15 March 2023

Revised: 13 July 2023 – Accepted: 30 October 2023 – Published: 24 December 2023

Abstract. Landslides are socio-natural hazards. In Colombia, for example, these are the most frequent hazards. The interplay of climate change and the mostly informal growth of cities in landslide-prone areas increases the associated risks. Landslide early warning systems (LEWSs) are essential for disaster risk reduction, but the monitoring component is often based on expensive sensor systems. This study presents a data-driven approach to localize landslide-prone areas suitable for low-cost and easy-to-use LEWS instrumentation, as well as to estimate the associated costs. The approach is exemplified in the landslide-prone city of Medellín, Colombia. A workflow that enables decision-makers to balance financial costs and the potential to protect exposed populations is introduced. To achieve this, city-level landslide susceptibility is mapped using data on hazard levels, landslide inventories, geological and topographic factors, and a random forest model. Then, the landslide susceptibility map is combined with a population density map to identify highly exposed areas. Subsequently, a cost function is defined to estimate the cost of LEWS monitoring sensors at the selected sites, using lessons learned from a pilot LEWS in Bello Oriente, a neighbourhood in Medellín. This study estimates that LEWS monitoring sensors could be installed in several landslide-prone areas with a budget ranging from EUR 5 to EUR 41 per person (roughly COP 23 000 to 209 000), improving the resilience of over 190 000 exposed individuals, 81 % of whom

are located in precarious neighbourhoods; thus, the systems would particularly reduce the risks of a social group of very high vulnerability. The synopsis of all information allows us to provide recommendations for stakeholders on where to proceed with LEWS instrumentation. These are based on five different cost-effectiveness scenarios. This approach enables decision-makers to prioritize LEWS deployment to protect exposed populations while balancing the financial costs, particularly for those in precarious neighbourhoods. Finally, the limitations, challenges, and opportunities for the successful implementation of a LEWS are discussed.

1 Introduction

The lives and livelihoods of billions of people around the world are disrupted by human-induced hazards, exacerbated by climate change. The Intergovernmental Panel on Climate Change (IPCC) of the United Nations has recently reported that climate change is causing more frequent and severe storms, floods, droughts, wildfires, and other extreme weather events (IPCC, 2022). The climate crisis has global implications and poses several challenges to governments, societies, and science (Marchezini et al., 2018), with some geographic regions being more affected than others. For example, Colombia is one of the most landslide-prone countries

in the world. The majority of its population lives in areas that are prone to landslide hazards (Ruiz Peña et al., 2017). In Colombia, the increasing frequency of intense and persistent rainfall, coupled with unplanned urban growth in areas prone to landslides driven by limited land availability, significantly increases the likelihood of disasters, particularly impacting the most vulnerable populations (World Bank, 2012).

Due to the occurrence of a disaster, or to mitigate the effects of an imminent natural hazard, people are occasionally compelled to evacuate their places of residence. Displacement severely disrupts people's lives, raising unemployment, interrupting education, and hindering access to essential services, ultimately leading to increased vulnerability and impoverishment. Implementing preparedness measures is crucial in mitigating risks associated with displacement. These measures enhance risk awareness among individuals at risk of displacement, empowering them to make informed decisions and comply with the warnings (UNDRR, 2021). In fact, one of the seven global targets of the Sendai Framework for Disaster Risk Reduction 2015–2030 is to “Substantially increase the availability of and access to multi-hazard early warning systems and disaster risk information and assessments to people by 2030” (UN, 2015).

Landslide early warning systems (LEWSs) play a crucial role in reducing the risk associated with landslides. LEWSs provide timely information of slowly changing slope stability or acutely dangerous situations, enabling proactive measures, enhancing public awareness and education, and facilitating better planning and decision-making. Additionally, LEWSs collect valuable data that can be utilized for scientific research, monitoring, and analysing landslide behaviour. Thus, in turn, the understanding of landslides, their triggers, and their impacts can be understood better, leading to the development of improved predictive models and more effective LEWSs (Guzzetti et al., 2020; WMO, 2018; Segoni et al., 2023). LEWSs have the potential to minimize the loss of lives and mitigate the economic and social impacts of disasters. They provide significant economic benefits by reducing damage and loss, facilitating cost-effective planning and response, preserving economic activities, and saving costs in emergency response operations (Rogers and Tsirkunov, 2011; Grasso, 2014). Therefore, they offer a viable alternative to relocating exposed populations, especially since relocation is in most regions economically unviable and relocation often faces strong opposition from residents (Werthmann and Echeverri, 2013). These economic advantages make investing in LEWSs a prudent choice. However, it is important to note that the cost of implementing LEWSs can vary significantly depending on factors such as the size and complexity of the monitored area, the technology and infrastructure employed, and the level of system sophistication. Furthermore, beyond the technical implementation and maintenance, the effectiveness of a LEWS relies on actively involving at-risk individuals, improving education and awareness of risks, ef-

ficiently disseminating messages and warnings, and ensuring preparedness (WMO, 2018).

In general, however, LEWSs offer promising potential when well-integrated and properly managed. However, these systems also face several challenges, shortcomings, and untapped potential: the monitoring components of LEWSs often rely on expensive high-end sensor systems, such as multi-phase GNSS (global navigation satellite system), GB-SAR (ground-based synthetic aperture radar), and tacheometry. These systems require highly trained personnel for operation and are specifically tailored to the local situation, making their transfer to other regions or countries difficult. Nevertheless, there are also low-cost and easy-to-use sensor systems available, such as MEMS (micro-electromechanical system) tilt inclinometers, acceleration sensors, continuous shear monitors, and piezometers. By installing these geosensors in a local network, valuable information about the surface and subsurface processes on landslide-prone slopes can be obtained (Thuro et al., 2014; Uchimura et al., 2015; Singer et al., 2021). When combined with data analysis and numerical landslide process models (Huggel et al., 2010; Thiebes et al., 2014), these sensor systems have the potential to enhance the quality, reliability, and usability of hazard warnings, as well as to reduce the need for extensive manual work. An example is the low-cost subsurface monitoring system implemented in the Alps, specifically at Sudelfeld in Bayrischzell, Germany, which operated from 2008–2014. This system included cost-efficient ground deformation measures and groundwater level and precipitation monitoring (Singer and Thuro, 2006; Thuro et al., 2010). In recent decades, advancements in technology and affordability of slope monitoring have improved, enabling more widespread applications, including in low-income countries. However, continuous monitoring is still limited to only a few slopes worldwide, with some site-specific LEWSs in Latin America (Guzzetti et al., 2020). The dissemination of experiences, challenges, and limitations associated with LEWSs is not a priority and is therefore rarely done, particularly in English (e.g. Reinoso Jerez, 2013; Departamento del Quindío, 2018; Castro Bonilla, 2021).

In general, there are estimates available regarding the economic benefits of early warning systems (EWSs), particularly in European countries, the United States, and Japan (Hallegatte, 2012). For instance, in Europe, the annual benefits of EWSs are estimated to range between EUR 470 million and EUR 2.8 billion. Similarly, it has been projected that low-income countries could experience potential benefits with a cost–benefit ratio ranging from 4 to 35, along with associated co-benefits, provided similar EWSs were available (Hallegatte, 2012). However, estimating the costs and benefits of implementing local LEWSs remains challenging due to various factors influencing the overall expenses. The implementation of a comprehensive LEWS requires substantial investments, including but not limited to equipment costs, infrastructure development, ongoing maintenance, personnel

expenses, and social integration. Recognizing this knowledge gap, this study aims to contribute to the literature by providing cost estimations for the instrumentation of low-cost, local, and site-specific LEWSs. To the best of the authors' knowledge, the estimated cost of the monitoring instrumentation of local and site-specific LEWSs is largely unknown or unpublished despite being highly relevant for policy-makers involved in disaster risk reduction.

The purpose of a LEWS is to reduce risk and improve preparedness for hazards in specific locations. Thus, it is imperative to identify landslide-prone areas, the location of people and assets in exposed locations, and their vulnerabilities. In this context, Earth observation (EO) plays an important role in early warning, mapping, and monitoring natural hazards (Grasso, 2014; Casagli et al., 2017). EO can be used, for example, to identify populations exposed and vulnerable to different natural hazards (Taubenböck et al., 2008; Geiß et al., 2017; Müller et al., 2020; Kühnl et al., 2023), as well as to estimate landslide susceptibility at different regions and scales (Cantarino et al., 2019; Palacio Cordoba et al., 2020; Ospina-Gutiérrez and Aristizábal, 2021).

Landslide susceptibility modelling has witnessed an increase in popularity due to the advancements in remote sensing and machine learning models. Traditional knowledge-driven methods, such as the multicriteria analytical hierarchy process (AHP) developed by Saaty (1980), rely on weights assigned to several landslide-influencing factors. Thus, the result depends on the experience of the user and the potential to identify factors that are important for a special case (Günther et al., 2014; Skilodimou et al., 2019). In contrast, data-driven methods rely on reference data (e.g. landslide inventories) and conditioning factors (i.e. factors influencing landslide risks), which are used to identify their interconnected relationships and predict landslide susceptibility based on statistical models. Data-driven approaches have demonstrated significant potential in effectively mapping areas prone to landslides, particularly in situations where the availability of comprehensive geotechnical data required for physically based methods is lacking. Some of the most common data-driven methods include random forest (Taalab et al., 2018; Calderón-Guevara et al., 2022; Ado et al., 2022; Abu El-Magd et al., 2021), logistic regression (Ado et al., 2022; Azarafza et al., 2021), convolutional and artificial neuronal networks (Nikoobakht et al., 2022; Calderón-Guevara et al., 2022; Ado et al., 2022; Azarafza et al., 2021), boosted regression trees (Calderón-Guevara et al., 2022; Pourghasemi et al., 2021), weight of evidence (Calderón-Guevara et al., 2022), support vector machine (Nikoobakht et al., 2022; Ado et al., 2022; Azarafza et al., 2021), k-nearest neighbour (Nikoobakht et al., 2022; Abu El-Magd et al., 2021), naïve Bayes (Abu El-Magd et al., 2021; Azarafza et al., 2021), and linear discriminant analysis (Eiras et al., 2021; Pourghasemi et al., 2021). Previous studies have compared the performance of AHP and statistical methods, and the latter was found to perform better (Erener et al., 2016;

Ali et al., 2021; Vojtek et al., 2021). Nevertheless, currently, there is no definitive data-driven method established as the optimal choice for empirical landslide susceptibility modelling. In the recent literature, various methods have been employed and compared, and their accuracies and suitability have shown regional variations. In this study, the random forest method is implemented due to its demonstrated high accuracy in Colombia (Calderón-Guevara et al., 2022). Additionally, this method offers the advantage of being non-parametric, allowing for the inclusion of influencing factors that are not normally distributed (Breiman, 2001).

In this context, the landslide-prone city of Medellín in Colombia is notable for its comprehensive landslide inventories (which are crucial resources for collecting information related to landslide occurrences, for deriving empirical knowledge, and for creating landslide susceptibility maps) and its implementation of both a city-wide EWS and a local-scale LEWS. On the one hand, the Aburrá Valley and the city of Medellín implemented an EWS (Sistema de Alerta Temprana de Medellín y el Valle de Aburrá, SIATA) that monitors real-time hydrological, meteorological, seismic, and geotechnical variables to forecast natural and anthropic phenomena and to strengthen risk management in the territory (SIATA, 2023). On the other hand, a unique local, site-specific, and low-cost participatory LEWS was implemented in a local community known as Bello Oriente by a research project called Inform@Risk (Strengthening the Resilience of Informal Settlements against Slope Movements; Werthmann et al., 2023). Bello Oriente is a settlement that was originally built informally on one of the eastern slopes of the city in an area exposed to landslide hazard. The LEWS includes a wireless network of sensors that is based on Internet of Things (IoT) technologies. It monitors movements in the subsurface and their effects on the built infrastructure (e.g. tilting, opening of cracks), groundwater levels, and other parameters that, in combination with weather variables and forecasts, are used to inform people about the level of risk. With this, the system aims to provide exposed people enough time to react in the case of an event and to improve their risk awareness and resilience.

For the above-mentioned reasons, Medellín is selected as the study area. Using lessons learnt from the LEWS prototype installation in Bello Oriente in the frame of the Inform@Risk project and assuming that sufficient financial resources are not available on an ad hoc basis for citywide instrumentation with LEWSs, a cost function is developed which allows us to weigh the cost, the location(s), and how many people can possibly benefit from a LEWS in landslide-prone areas. The ultimate goal is to assist decision-makers in their prioritization efforts by providing a comprehensive assessment that facilitates the strategic implementation of LEWSs, ensuring maximum impact and cost efficiency by offering valuable recommendations based on different cost-effectiveness scenarios. Therefore, the specific objectives of this study are (1) to identify highly exposed landslide-prone

areas that are suitable for the implementation of LEWSs with automatic monitoring sensors, (2) to determine a cost function based on topographic and socio-economic parameters for the implementation of a LEWS, and (3) to provide suggestions for decision-makers on where to start with the implementation of new LEWSs based on cost effectiveness and prioritized areas.

2 Material and methods

In this section, the developed workflow for a city-wide cost-effectiveness analysis for LEWSs is introduced. First, the study area and datasets are presented. Subsequently, the process of deriving a landslide susceptibility map is explained, along with the preselection of exposed sites where the installation of a LEWS is preferable. Then, the calculation of physical, social, demographic, and infrastructure parameters is conducted for the preselected sites within the pool of possible LEWS installations. This analysis supports the identification of suitable sites for the LEWS installation. Lastly, the cost function is presented, which aims to prioritize the installation of LEWS based on cost effectiveness (Fig. 1).

2.1 Study area

This study takes place in Medellín, Colombia, a highly populated city situated in the Aburrá Valley. The city is characterized by a steep topography, which poses a significant landslide risk, particularly on the eastern slopes. These slopes are predominantly composed of heavily fractured dunite rock, which undergoes deep and intense weathering in the region's tropical conditions due to its high iron content (Thuro et al., 2020). The dunite is overlaid by colluvium material, previously displaced by landslide processes, forming a block-in matrix structure with varying thicknesses ranging from 5 m to over 30 m (Breuninger et al., 2021). This colluvium reveals that substantial portions of the slope have been affected by landslides in the past, and the steep topography of the hills makes them susceptible to future landslides.

In Medellín an increasing portion of the population is exposed to landslide risks (Kühnl et al., 2023). The city showcases a diverse range of urban structural configurations and socio-economic levels, encompassing high-rise buildings in the business district and wealthier neighbourhoods, as well as light-weight and low-rise buildings in precarious neighbourhoods. The latter are primarily located in landslide-prone regions (Kühnl et al., 2021). These factors contribute to significant inequalities in risk exposure for various social groups.

2.2 Landslide inventories and hazard map

The extensive history of landslides in Medellín has led to the establishment of multiple databases that document landslide events, causalities, and damage to buildings and infrastructure. Specifically, there are three main databases where in-

dividuals report landslides: SIMMA, DesInventar, and DAGRD.

SIMMA (Sistema de Información de Movimientos en Masa), managed by the Colombian Geological Survey, is a national landslide inventory (SIMMA, 2022). For Medellín, it provides precise coordinates for 13 landslide events between 1985 and 2013.

DesInventar is the international Disaster Information Management System, which helps in analysing disaster trends and impacts (DesInventar, 2022). The “Medellín Área Metropolitana” database, managed by the Universidad Nacional de Colombia, contains information from 1880 to 2022, including 21 landslides with precise coordinates between 2018 to 2022.

DAGR (Departamento Administrativo de Gestión del Riesgo de Desastres) registers past or foreseen landslides based on emergency calls from citizens, which are subsequently evaluated by DAGRD technicians. The department provided data from 2004 to 2019, encompassing over 30 200 reports of potential mass movements with their coordinates (DAGR, 2018). It is important to note that the vast majority of these reports are concentrated in the urban areas, with limited coverage of events in rural regions.

In addition to landslide inventories, remote sensing data and techniques have proven effective for detecting and mapping landslides (Guzzetti et al., 2012), especially when inventories lack precise spatial accuracy. In this paper, the information from the three inventories was combined with landslide locations identified through remote sensing in the urban–rural border and rural areas. This involves utilizing multi-temporal imagery from the Landsat-7, Landsat-8, and Sentinel-2 satellites and applying change detection methods to vegetation indices in areas where landslides are indicated by news articles. It is assumed that significant changes in these vegetation indices in areas of steep slopes are indicative of variations in the soil surface or vegetation removal. These areas can then be attributed to landslides (Mondini et al., 2011). In total, eight landslides were identified between 2008 and 2019.

Additionally, the latest “master plan” of the city of Medellín from 2014 (POT 2014 – Plan de Ordenamiento Territorial) incorporates a zoning system for landslide hazards (Alcaldía de Medellín, 2014a). The hazard map results from a comprehensive analysis that incorporates various sources of information. These include the hazard map from the POT 2006, a probabilistic hazard map developed by the Universidad Nacional, and the DAGRD landslide inventory until 2014, as well as heuristic processes, fieldwork, and the expertise of technicians from DAGRD and the Administrative Department of Planning (Departamento Administrativo de Planeación). To model landslide susceptibility, the mass movements inventories and the hazard map from the POT 2014 are utilized as reference data. Given the absence of specific details concerning the type of mass movements and considering that the majority of mass movements in Medellín are

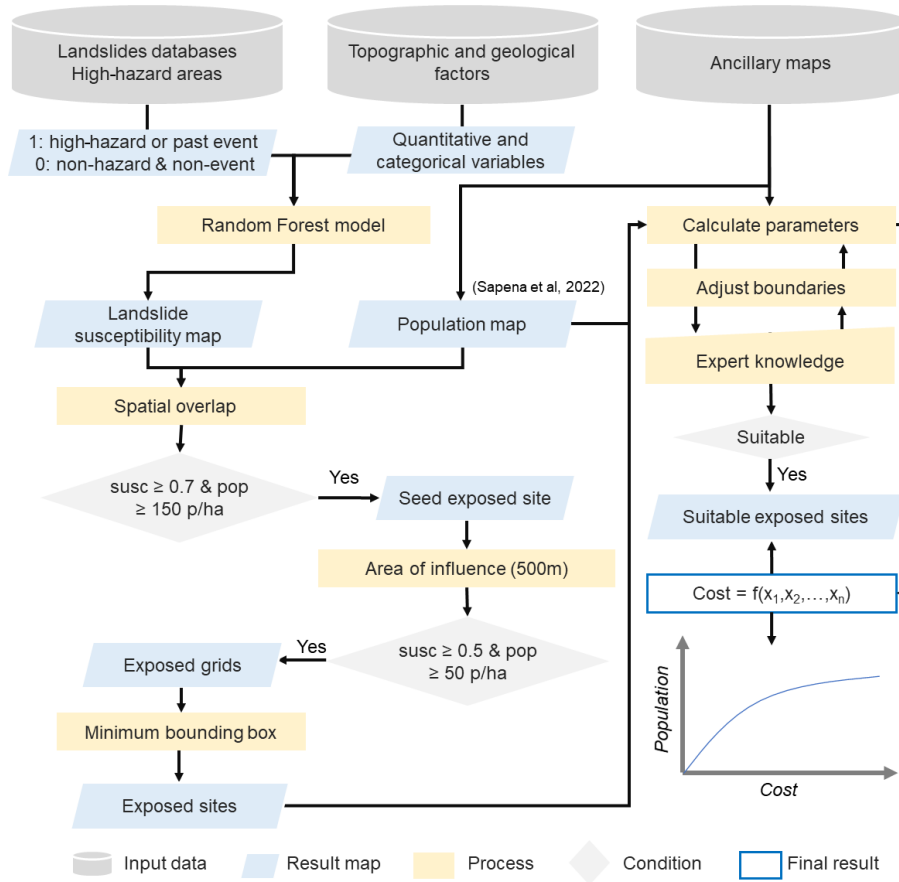


Figure 1. Workflow of the study.

landslides, it is assumed that all available reports correspond to landslides. These datasets form the foundation for training and evaluating the model for the identification of possible areas prone to landslides, as elaborated further in Sect. 2.4.

2.3 Factors influencing landslide risk

For modelling landslide susceptibility, the proposed methodology incorporates a range of factors influencing landslide risks including topographic, geological, and precipitation data. In addition, to support the search for suitable locations for the implementation of LEWSs, socio-demographic factors are also considered. The database consists of the official cartography from open-data platforms of the city of Medellín and the metropolitan area of the Aburrá Valley such as “GeoMedellín” and “Datos Abiertos del AMVA” (Alcaldía de Medellín, 2023; AMVA, 2023), precipitation data from SIATA (SIATA, 2023), OpenStreetMap data (downloaded in 2022, openstreetmap.org), a high-resolution population map that provides estimates of the number of people per building and a grid of 100 m from Sapena et al. (2022), and a map of precarious settlements from Kühnl et al. (2021).

Various topographic factors are derived from contour lines to analyse the terrain. Contour lines at different scales (1 :

2000 for urban areas and 1 : 5000 for rural areas) are utilized to generate a triangular irregular network (TIN) surface. By interpolating the altitude data from the TIN, a digital elevation model (DEM) with a spatial resolution of 5 m is generated. This DEM is used for deriving several topography-related factors, including slope, aspect (which indicates the downhill direction of the slope), and curvature (which represents the shape or curvature of the slope) (Fig. 2). Additionally, the DEM is used to model water flows, resulting in the extraction of the stream network, stream order, landslide travel paths, and angle of reach of landslides (also known as the “fahrböschung angle” or α). The angle of reach provides insight into the potential mobility of a landslide (Hungur et al., 2005). Regarding the stream network, there is no universally agreed upon flow accumulation threshold for determining streams due to its dependence on various factors, including desired stream density, data scale, resolution, and landscape attributes. Nonetheless, it is common practice to employ threshold values within a range of approximately 100 to 1000 pixels or 0.05 to 5 km² drainage area (Reddy et al., 2018; Tarboton et al., 1991). In this study, multiple values within this range are evaluated, and it was determined that a threshold of 500 contributing pixels (equivalent to a min-

imum stream inflow of $12\,500\text{ m}^2$) achieved the closest correspondence with the official drainage system map from the POT of Medellín. Furthermore, a visual examination of the result reveals a satisfactory representation of the majority of streams. The Strahler method (Tarboton et al., 1991) is used to classify the streams into numerical orders, distinguishing between main streams classified as major tributaries (ranging from order 7 to 5) and other streams categorized as outermost tributaries (ranging from order 4 to 1). Two Euclidean distance maps are then generated to calculate the distance from a given pixel to both the main streams and the other streams (Fig. 2). Subsequently, the travel path and angle of reach of a landslide are used to support identifying exposed sites. This is done by identifying unpopulated areas where landslides are likely to occur and where their runout can extend into the inhabited area.

For the geology, geomorphology, and geotechnics of the study area, data are gathered from “Datos Abiertos del AMVA”. Three maps containing categorical information on geological units, geomorphologic units, and geotechnical zoning are used. The surface geology plays a crucial factor as it provides information about the physical composition of materials, their properties, and mechanical strength characteristics. Geomorphology offers valuable information on the landscape, i.e. the stability, slope, and shape. Additionally, geotechnics provide details about soil types (Universidad Nacional de Colombia, 2009) (Fig. 2).

Precipitation plays a crucial role in triggering landslides, particularly in mountainous areas. In the study area, the average yearly precipitation exhibits significant variations due to local luv and lee effects. Thus, precipitation data obtained from the meteorological stations of SIATA are used. Precipitation measurements from the 215 available stations in the Aburrá Valley for 2021 are acquired. Using these data points, interpolation techniques are employed to generate a continuous map of rainfall accumulation with a spatial resolution of 5 m. To achieve this, the ordinary kriging optimized smoothed (OKOS) method is employed, accompanied by cross-validation. For this process, 70 % of the stations are selected for training and the remaining 30 % for testing. The evaluation provides a root mean square error (RMSE) value of 506 mm yr^{-1} , which represents the discrepancy between the predicted and observed yearly precipitation accumulation. In relation to the mean value of precipitation across all stations, i.e. 1425 mm yr^{-1} , the normalized RMSE, indicating the relative error, is approximately $\pm 35\%$. This error is in line with the existing literature, which commonly reports normalized RMSE values ranging from 30 %–35 % (Bostan et al., 2012) and 17 %–29 % (Antal et al., 2021) (Fig. 2).

When it comes to decisive factors for assessing the suitability and prioritization of potential locations for implementing a LEWS, socio-demographic and infrastructure variables are used. To begin with, the population map is used to identify sites with both high population density and a high susceptibility to landslides. These areas allow us to

quantity the exposed population. However, from a socio-economic perspective the exposed populations at these sites do not have equal vulnerabilities, i.e. the financial resources to recover from a disastrous event. In consequence, the calculated population of these sites is combined with information on the socio-economic precariousness of the residents. The exposed population living in precarious settlements is referred to hereinafter as the highly vulnerable population. This comprehensive analysis enables us to prioritize exposed areas that exhibit a higher vulnerability to disastrous events. In addition, data on the road infrastructure are employed, which is a relevant factor in determining the placement of sensors within the LEWS. The official road network cartography from “GeoMedellín” is supplemented with additional road data from OpenStreetMap (Fig. 2).

2.4 Mapping landslide-prone areas

In this study, baseline data on recent landslide events and an official hazard map are employed to train a random forest statistical model. The aim of this model is to predict the probability of landslide events, also referred to as landslide susceptibility, by considering multiple conditioning factors. Therefore, the landslide hazard map, which incorporates local expert knowledge, includes additional landslide events from the compiled inventories that were not originally included in the hazard map (i.e. all landslides from Sect. 2.2 starting from 2015 onwards). Both datasets are considered as reference data in the model. Consequently, a set of sampling points is created using these reference data: within high-hazard zones (5000 points); recorded landslide events (2800 points); and non-hazardous areas including medium-, low-, or very low-hazard zones (8000 points). Each point is assigned a numeric attribute representing the dependent variable: high-hazard (1) and non-hazard (0). Additionally, the values of all conditioning factors, explained in Sect. 2.3, are also assigned to each point and are used as independent variables in the model. The sampling set is then divided into training data (70 %) and testing data (30 %). The non-parametric random forest algorithm (Breiman, 2001) is employed, using 100 trees, 3 variables at each split, and 5 terminal nodes. The susceptibility map is generated using the training data, providing the probability of a pixel being classified as high-hazard (1), calculated based on the proportion of votes across the ensemble of trees. The testing data, which were not used for training, are used to evaluate the model. Ultimately, the accuracy statistics are measured using the remaining testing set.

2.5 Selection of exposed areas

A zero susceptibility level is assigned to areas with slopes equal to or lower than 10° in the resulting landslide susceptibility map. This is in accordance with the assessment by Alcaldía de Medellín (2014b) as these slopes are considered

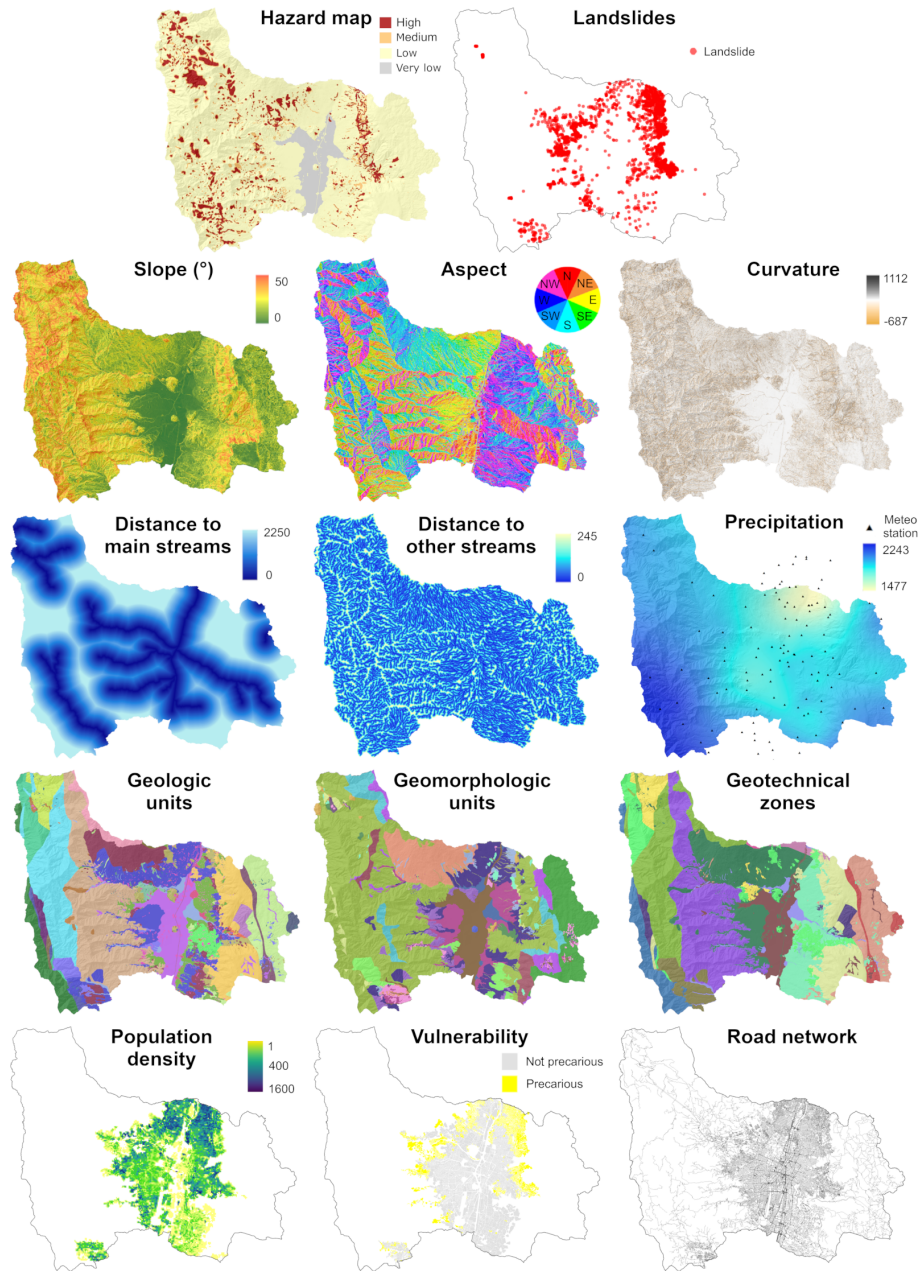


Figure 2. Dependent variables in the model (hazard map and landslide events), independent variables or conditioning factors (topographic, geological, and precipitation), and ancillary data (socio-demographic and infrastructure).

non-hazardous in Medellín. Next, to identify the exposed areas, the average susceptibility per 100 m grid cell is calculated and combined with the population density per grid. This analysis focuses on the urbanized area, which contains the most exposed elements and where population data at a fine grain level are available.

The identification of exposed sites follows an iterative process, as depicted in Fig. 1. First, seeds of exposed sites are identified based on high susceptibility (≥ 0.7) and high population density (≥ 150 people per hectare). If two or more

seeds are contiguous or within 100 m of each other, the centroid is used as the seed location. Second, these seeds serve as starting points to search within a 500 m area of influence, which is set to match the size of the reference LEWS prototype in Bello Oriente. Pixels with medium to high susceptibility (≥ 0.5) and medium to high population density (≥ 50 people per hectare) within this area are considered. This process identifies all susceptible and populated pixels surrounding the seeds. Third, a minimum bounding box is calculated for each cluster of pixels to automatically define a

preselected exposed site. Fourth, the shape of the preselected sites is adjusted based on factors such as the urban structure, topography, travel path, and angle of reach of a landslide. Finally, several parameters for the preselected sites are calculated, including area, mean susceptibility, total population, population density, vulnerable population, built-up and road density, number of buildings, mean slope, main orientation of the slope, and open areas for the preselected sites. These parameters are then used by experts to inspect and select the suitable exposed sites based on the requirements of the LEWS and previous experience in Bello Oriente.

2.6 Developing a cost function

To estimate the costs of monitoring instrumentation for LEWSs in suitable sites, the existing LEWS prototype in Bello Oriente serves as a reference. It provides information on the required workforce (working hours for the sensor system construction and installation), node density, node types, and individual node costs. The Bello Oriente LEWS prototype covers a 39 ha area with a total population of 4600 residents, including 1800 individuals residing in high-hazard landslide zones. The Bello Oriente LEWS prototype utilizes an innovative wireless geosensor network based on IoT technologies, such as LoRa[®] wireless data communication and MEMS sensors. It incorporates a continuous shear monitor measurement cable and extensometer (CSM-EXT) system spanning 1100 m (Thuro et al., 2010) to monitor subsurface movements and near-surface groundwater levels, forming the foundation for generating warnings. Given the unpredictable nature of future landslides based on geological investigations, extensive coverage with high spatial and temporal observation density is essential. The wireless geosensor network in Bello Oriente consists of 115 nodes, of which 45 monitor subsurface deformation and groundwater levels (subsurface nodes), while 70 nodes detect movement in existing built infrastructure (infrastructure nodes). The spacing of nodes is adjusted according to the level of landslide risk, with high-risk areas having on average eight nodes per hectare and areas with no risk having no nodes. The nodes are open-source and can be replicated using published printed circuit board schematics, 3D printing models, and building instructions. Further details about the measurement system can be found in Gamperl et al. (2021) and Singer et al. (2021), as well as on the Inform@Risk wiki (<https://www.informatrix.com/>, last access: 13 July 2023).

It is important to note that the current cost estimation only considers the implementation of the wireless geosensor network and does not encompass other factors. Costs related to risk evaluation, social interventions, dissemination, continuous maintenance, and social work are not included in the analysis. The CSM-EXT measurement system was excluded due to its complexity and high installation costs, particularly in densely populated areas. Consequently, its widespread implementation as an alternative to the wireless sensor net-

work might not be viable or cost effective without conducting a detailed on-site survey. The costs associated with social work are highly site-specific and depend on various factors. These factors include whether the municipality conducts a risk assessment on the site, the community's acceptance of the LEWS installation, and the involvement of NGOs working with the community. Furthermore, the extent and nature of social work can vary significantly based on the risk awareness and social structure of the community. Drawing from the experience of the Inform@Risk project, the initial social implementation costs of the LEWS, which mainly involves social workers accompanying and explaining the installation process, producing and distributing information materials, and conducting training workshops and emergency drills, are expected to be at least comparable to the cost of implementing the technical system.

Next, the variables included in the cost function are explained. The cost of the sensor system elements was determined based on the required working time for production and installation; the 3D printing time; and the material costs such as electronics, sensors, cables, connectors, and accessories. For the working time, an hourly rate of EUR 15 was used, which corresponds to the approximate hourly cost (inclusive of all insurances and benefits) of a geotechnician in Colombia (as of 2022). The cost of 3D printing time was estimated at EUR 3 per hour, considering the filament cost, power consumption, maintenance, and the overall investment cost for the 3D printer spread over the lifespan of 10 000 operating hours. Material costs encompass all the components needed to construct and install the system. The costs are calculated without including VAT. For a detailed list of the required materials and step-by-step instructions for constructing and installing the sensor system, please refer to the Inform@Risk Wiki.

Regarding the sensor system design, a node density of eight nodes per hectare is established for areas with the highest susceptibility level of 1, resulting in a dense grid of nodes. This density is scaled down based on the susceptibility (i.e. a susceptibility of 0.5 corresponds to four nodes per hectare). The built-up density determines the distribution of node types. In highly urbanized areas, more infrastructure nodes are preferred, while in less urbanized areas, more subsurface nodes are considered. Therefore, the node density is multiplied by the total area to determine the necessary number of nodes per site. Subsequently, this number is multiplied by the built-up density to calculate the number of infrastructure nodes, with the remaining nodes being assigned as subsurface nodes. As for the gateways, it is assumed that at least one gateway per 25 ha is necessary, although having at least two gateways for redundancy is suggested to ensure a backup in case of failure. This is a conservative assumption, as typically not as many gateways will be required. Previous tests conducted in the city of Medellín indicated that using two to four gateways in the city centre could provide sufficient transmission reach to cover the entire eastern slope of the

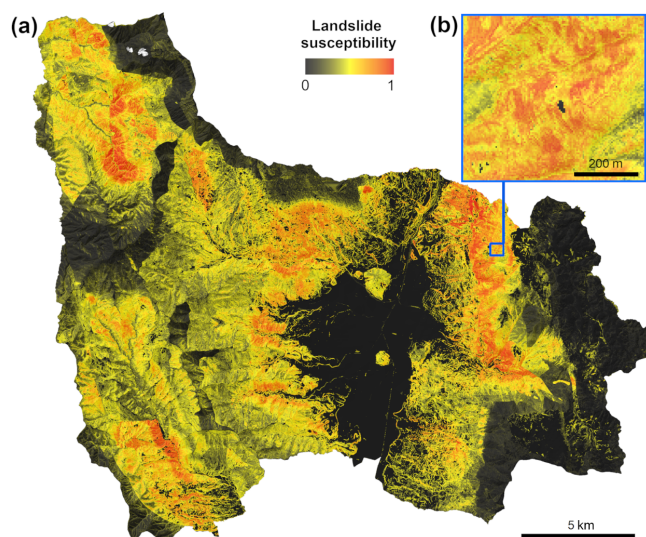


Figure 3. (a) Landslide susceptibility map (after filtering slopes equal to or lower than 10°) and (b) detail in Bello Oriente neighbourhood.

city. The cost for the three different sensor systems is presented in Table 1.

The cost function is calculated following Eq. (1):

$$\text{COST} = S \times 8 \times A \times (B_{\text{DENS}} \times \text{EUR } 250 + (1 - B_{\text{DENS}}) \times \text{EUR } 535) + G \times \text{EUR } 2220, \quad (1)$$

$$\text{where } G = \begin{cases} A \leq 25 \text{ ha} = 1 \\ A > 25 \text{ ha} \& A \leq 50 \text{ ha} = 2 \\ A > 50 \text{ ha} = 3 \end{cases} .$$

COST represents the estimation of monitoring instrument costs for a LEWS in a specific site. The variables considered in the cost function include the landslide susceptibility (S), the area of the site in hectares (A), and the built-up density within the site (B_{DENS}).

The cost function results are used to develop alternative cost-effectiveness scenarios to support decision-making for the implementation of new LEWSs. Five scenarios are evaluated, including prioritizing (1) the total cost of the LEWS, (2) the cost per person, (3) the total population (exposed and vulnerable), (4) the landslide susceptibility, and (5) a combination of the aforementioned scenarios (1–4). In scenarios (1) and (2), priority is given to the lowest costs, while in scenarios (3) and (4), priority is given to the highest population and susceptibility. In the combined scenario (5), the values are normalized using the min–max scale, where 1 represents the highest priority and 0 the lowest. The normalized values are then mapped and plotted on a graph, providing decision-making support.

3 Results

3.1 Landslide susceptibility map: exposed and suitable sites for LEWSs

The mapping of landslide susceptibility achieved an overall accuracy of 75.26 % (Fig. 3a). The sensitivity and specificity of the generated map were 80 % and 71 %, respectively. Sensitivity represents the percentage of correctly predicted high-hazard (1) class instances, while specificity represents the percentage of correctly predicted non-hazard (0) class instances. These metrics indicate that the model tends to slightly overestimate landslide susceptibility. It is important to note that, although the reference data are discrete, the susceptibility map is a probability map with continuous values ranging from 0 to 1 (a detail can be seen in Fig. 3b). Therefore, the accuracy is measured by considering probabilities equal to or higher than 0.5 as high-hazard (1) and probabilities lower than 0.5 as non-hazard (0), without considering the degree of susceptibility for the validation metrics.

To identify exposed sites suitable for potential LEWS implementation considering the risk factors, the combination of landslide susceptibility and vulnerable and exposed elements was performed. A total of 44 seeds were identified (Fig. 4a and b), which served as reference points for identifying susceptible and populated areas surrounding them, thereby delineating the boundaries of the sites. Subsequently, socio-demographic and topographic factors were calculated and used to assess site suitability. Among the identified sites, a total of 16 sites were deemed unsuitable for node-based LEWS implementation based on expert recommendations (Fig. 4c). The primary reason for discarding these sites was their high building density, with limited available open space for installing subsurface nodes and restricted monitoring capabilities of the LEWS to only infrastructure nodes. Additionally, some of the remaining 28 pre-selected sites were subdivided into smaller areas or modified based on considerations such as topography, built-up density, and road network in order to accurately define the boundaries of the suitable exposed sites (Fig. 4d).

The manual delineation process led to the identification of 32 preferred sites suitable for node-based LEWS installation (Fig. 4d). Socio-demographic and topographic factors used in the cost estimation function were calculated for these definitive sites (Table S1 in the Supplement). These sites are primarily located in the north-eastern part of Medellín, with additional sites in the east and west, characterized by high population densities and high landslide hazards (see Figs. 2 and 4). On average, these sites cover an area of 27 ha, with an average built-up density of 20 % and an average population density of 224 people per hectare (Table S1). The most densely populated site, located in Área de expansión Pajarito (site 21), has a population density of 512 people per hectare and a low built-up density. This area corresponds to a city expansion zone with high-rise buildings on the west side of

Table 1. Cost for the different monitoring sensor systems.

System	3D printing time and cost (EUR 3 per hour)	Working time and cost (EUR 15 per hour)	Material cost	Total cost
Infrastructure node	4.4 h EUR 13.2	1.5–1.75 h EUR 22.5	EUR 215	EUR 250
Subsurface node	40.7 h EUR 122.1	3.75 h EUR 56.25	EUR 355	EUR 535
Gateway	–	8 h EUR 120	EUR 2100	EUR 2220

the valley and no identified vulnerable population. On average, the sites are approximately 34 % open land, which is essential for installing subsurface nodes. In terms of slope, the selected sites have an average slope of 24°, ranging from a minimum of 15° in the west to a maximum of 35° in the east. As for landslide susceptibility, the average value is 0.68, with a minimum susceptibility of 0.51 and a maximum of 0.85 for the selected sites.

3.2 Cost estimation for the instrumentation of LEWSs

Based on the generated landslide susceptibility map and the factors outlined in Table S1, the estimated costs for installing monitoring sensors in the selected sites for LEWSs are calculated using Eq. (1). In order to facilitate and guide decision-making regarding the next LEWS installation in the city, various cost-effectiveness scenarios are evaluated. These scenarios go beyond the monetary efficiency and consider additional priorities such as the number of exposed and vulnerable individuals, as well as the landslide susceptibility of each site. By considering these factors, a more comprehensive understanding of site characteristics is obtained. Consequently, five priority scenarios are examined including prioritizing the total cost of LEWS, cost per person, total population exposed within the site (including vulnerable individuals), landslide susceptibility, and a combination of these factors.

Figure 5a provides information on the population that could potentially benefit from a LEWS in relation to the economic resources required in the combined scenario. It represents the overall costs of the system plotted against the total population per site. The priority level is indicated by a greyscale gradient, with darker shades indicating higher priority. The cost of the systems ranged from EUR 26 000 (\approx COP 132 million with a conversion rate of EUR 1/COP 5040 at the time of writing) to EUR 157 000 (\approx COP 789 million). In terms of cost per person (p.p.), the estimated range was EUR 5 to EUR 41 p.p. (\approx COP 23 000 to 204 000). Therefore, if the goal is, for instance, to prioritize the most affordable system (i.e. focusing on LEWS cost), the LEWS in El Corazón (site 29) located on the western slopes of the city is the least expensive option (Fig. 5a). However, it covers a smaller population compared to other sites with similar

costs. In this sense, the LEWS in El Pesebre (site 27) is the second least expensive option for instrumentation. It covers more than double the exposed population compared to site 29, although it is important to note that most of the population is not classified as vulnerable.

To demonstrate the potential of the proposed cost function, a case scenario is simulated where the city of Medellín has a budget of COP 2000 million (\approx EUR 397 000) allocated for the implementation of LEWSs. This simulation aims to illustrate the number of LEWSs that could be installed within a specific budget, considering different cost-effectiveness scenarios. Based on these scenarios, several sites are suggested as potential starting points for implementing the systems, depending on different priorities. Figure 5b shows the locations of the sites where LEWSs could be installed using the allocated budget, according to the different scenarios (overall cost, cost p.p., exposed and vulnerable population, landslide susceptibility, and the combined scenarios) using values from Table S1. The colour assigned to each site represents the prioritization based on the corresponding scenario. Sites that have more than one colour are prioritized in multiple scenarios. The accompanying table in Fig. 5b provides information on the total number of LEWSs that could be instrumented under each priority scenario, the total cost, average cost p.p., the total number of exposed and vulnerable people, and the average susceptibility.

With the same available budget, it is feasible to instrument nine LEWSs if the objective is to minimize the total cost (shown in blue in Fig. 5b). These LEWSs are predominantly located on the western slopes and cover a population of approximately 41 000 individuals, including 19 000 who are considered highly vulnerable. The average landslide susceptibility in these areas is around 0.6. However, when considering all priorities, four LEWSs can be installed (represented in grey in Fig. 5b) at a lower average cost p.p. These LEWSs are primarily located on the eastern slopes, with only one situated in the western part of the city. In this scenario, the number of exposed individuals covered by the LEWSs remains at 41 000, but the proportion of highly vulnerable individuals increases to nearly 30 000. Additionally, the sites exhibit higher susceptibility levels.

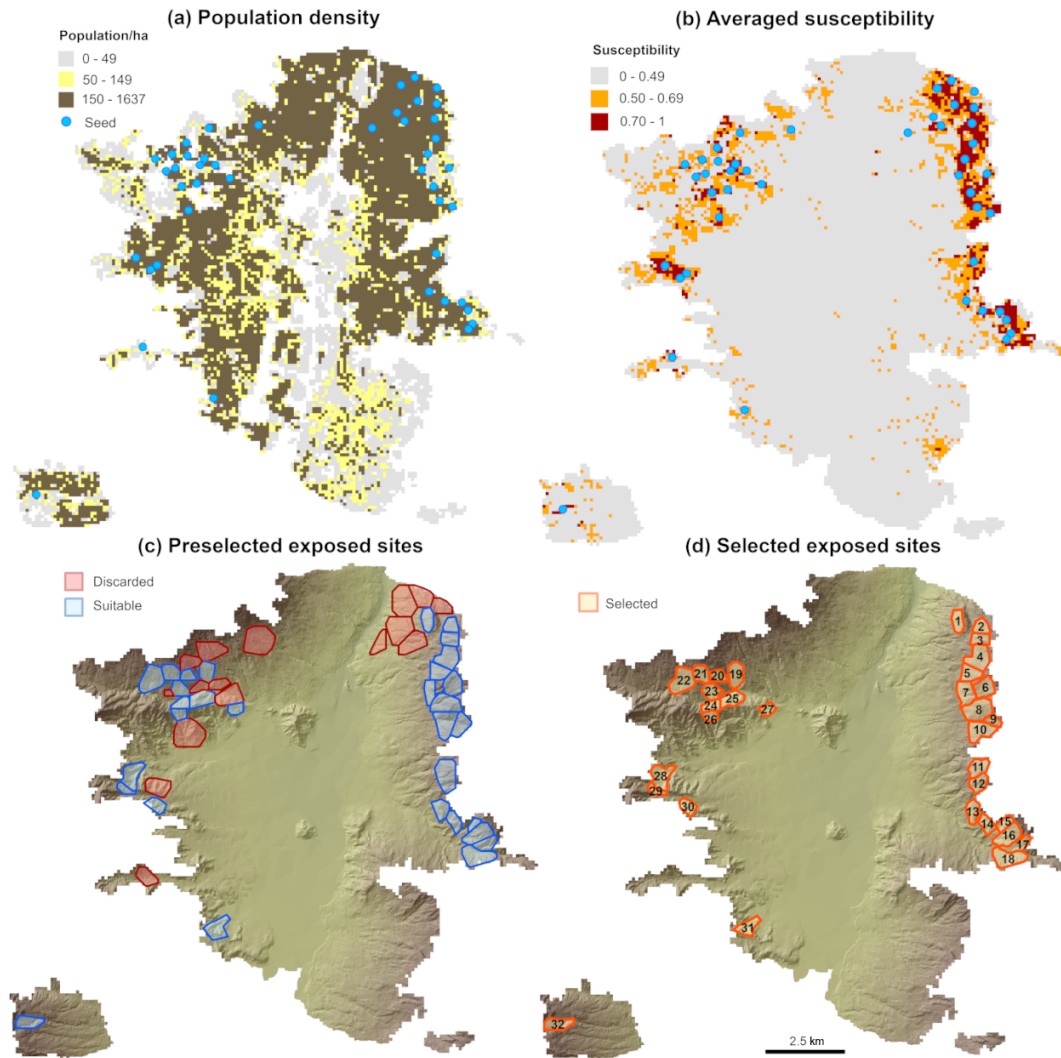


Figure 4. Identification of seeds based on (a) highly populated areas and (b) susceptible grids. (c) Automatic delineation of exposed sites by means of seeds' areas of influence and preselection of suitable sites. (d) Suitable exposed sites after the manual delineation of their boundaries.

For instance, one site of great significance in several scenarios is located on the north-eastern slope of Medellín, between the south of Carpinelo and north of Maria Canocambolas (site 4). This site is home to almost 14 000 highly vulnerable individuals residing in precarious settlements, with a relatively high average landslide susceptibility of 0.74. The estimated cost p.p. at this site is EUR 9.4 (COP 47 000), indicating that with an approximate budget of EUR 130 000 (COP 656 million), a substantial proportion of the exposed and highly vulnerable population can be covered. Likewise, the LEWS in Santo Domingo el Savio 1 (site 1), located on the north-eastern slope, is the most effective in terms of cost p.p., susceptibility, and combined priorities. However, if the objective is to cover the maximum number of exposed individuals, this site may not be the most suitable option. In that case, the LEWS in Área de expansión

de Pajarito (site 21), situated on the western slopes, covers a greater number of exposed people, offers a more effective cost p.p., and has a lower overall system cost compared to site 1. However, its lower landslide susceptibility reduces the likelihood of a landslide occurrence. On the other hand, the LEWS in El Corazón (site 29) would be the most affordable option with a low cost p.p., yet it exhibits the lowest susceptibility and covers fewer exposed individuals, which may impact its suitability. Similarly, the most expensive LEWS in La Cruz (site 8), on the north-eastern slope, has a reasonable cost p.p., while the number of exposed individuals and the landslide susceptibility are significantly higher.

Figure S1 in the Supplement illustrates the 32 sites in descending order of priority for the installation of site-specific LEWSs. The figure presents the cumulative value of the five priorities, where the exposed population is divided by vul-

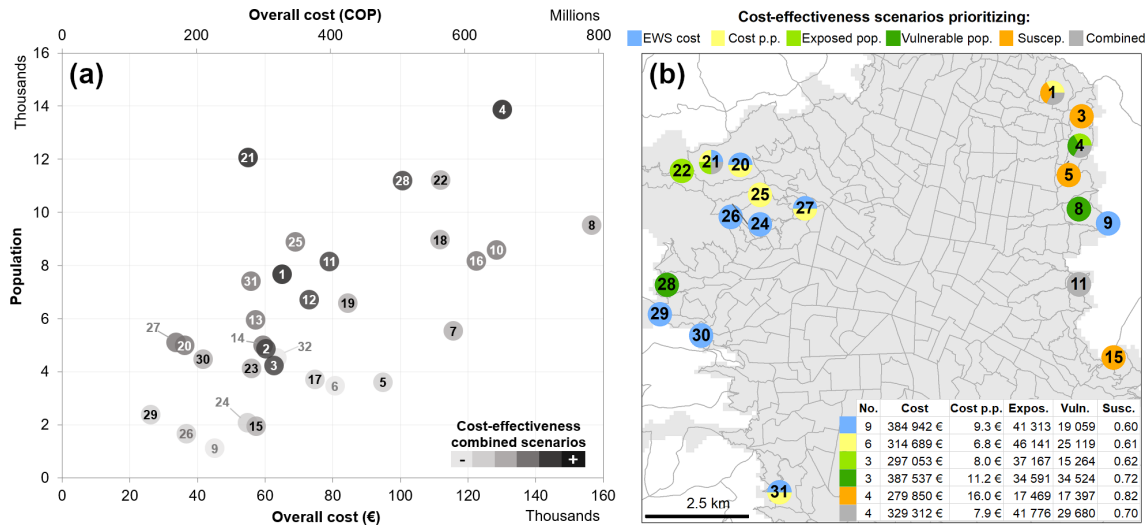


Figure 5. (a) Overall costs of the monitoring system installation of a site-specific LEWS versus the number of people for each site. The label number represents the site ID, while the grey tone represents the priority per site based on the cost effectiveness of the combined scenario. Cost is given in euros (EUR) and Colombian pesos (COP). (b) Based on the priority, the map shows the sites where LEWSs could be installed with an allocated budget of COP 2000 million. Values are summarized in a table with the number of LEWSs, total cost, cost p.p., people exposed, people vulnerable, and susceptibility.

nerability. By considering all priorities together, decision-makers can assess the combined value in Fig. S1, enabling them to identify sites that are highly prioritized across multiple cost-effectiveness scenarios simultaneously. This graphical representation assists in locating the optimal site for implementing the next LEWS, taking into account various considerations such as available funds (as depicted in Fig. 5b) or the size of the highly vulnerable population.

Furthermore, Fig. 6 illustrates the cost function developed for prioritizing the installation of LEWSs based on the different cost-effectiveness scenarios. If the city intends to implement LEWSs in all 32 proposed suitable sites, a total budget of EUR 2.4 million (\approx COP 12 100 million) would be required to cover the 200 000 exposed individuals. The trend lines in Fig. 6 depict the population covered by LEWSs based on the available funds and the priority scenario. Prioritizing the cost p.p. yields the most efficient result in terms of budget utilization and population coverage. However, as observed in Fig. S1, this approach overlooks landslide susceptibility and the overall exposed population. In this regard, the combined scenario, which considers all relevant factors, demonstrates a similar trend and is recommended for prioritizing the installation of new LEWSs. As an example, the priority of site 4 is displayed for all cost-effectiveness scenarios. By utilizing these scenarios, policy-makers can make conscious and informed decision regarding the installation of LEWSs, including the purpose and location.

4 Discussion

In recent years, there has been a significant increase in the utilization of data-driven methods and EO-derived data for mapping landslide susceptibility (e.g. Abu El-Magd et al., 2021; Ado et al., 2022; Azarafza et al., 2021; Calderón-Guevara et al., 2022; Eiras et al., 2021; Nikoobakht et al., 2022; Taalab et al., 2018) and for generating detailed population distribution maps (Sapena et al., 2022; Metzger et al., 2022). These advancements have enabled the identification of highly exposed areas prone to landslides in various regions worldwide (Garcia et al., 2016; Modugno et al., 2022; Kühnl et al., 2023). This study proposes a comprehensive workflow that can be applied to identify exposed areas prone to landslides that are suitable for the implementation of low-cost and site-specific LEWSs. Furthermore, it adds to the current literature, as a cost estimation function for the instrumentation of the LEWSs has been developed that considers factors such as area, landslide susceptibility, and building density, allowing for the assessment and comparison of estimated costs across multiple sites. This integrated approach facilitates informed decision-making processes by prioritizing actions based on cost effectiveness. One of the key contributions of this study is the provision of an open and transparent cost estimation for LEWSs, serving as a valuable reference for other regions.

Through the application of the proposed workflow, more than thirty critical locations characterized by high exposure, high vulnerability, and high susceptibility to landslides were successfully identified in Medellín. These locations can be assessed by the municipality of Medellín to implement LEWSs based on the available budget. Implementing LEWSs

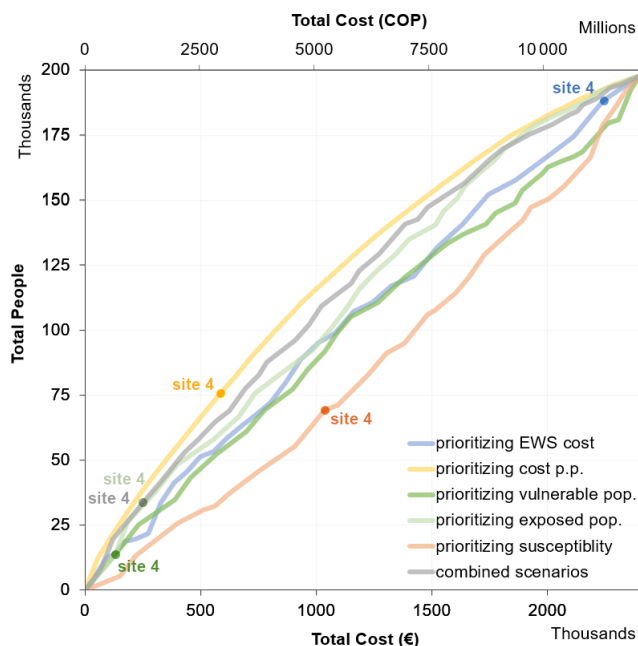


Figure 6. Cost function based on different cost-effectiveness scenarios and their combination. It shows the number of people that can be covered by the available funds, based on the preferred priority. Site 4 is highlighted to exemplify the particular priority within the cost-effectiveness scenario being considered.

in these areas has the potential to enhance the resilience of thousands of individuals residing in various parts of the city. Moreover, by utilizing the developed cost function the price to instrument the monitoring component of a LEWS in each location was estimated, and several cost-effectiveness scenarios that align with the financial resources allocated for risk management were suggested. As a result, this study provides valuable decision-making support on where to proceed with LEWS implementation following the successful deployment in Bello Oriente (Werthmann et al., 2023). With this, a conscious, informed, and transparent policy decision can be supported – where to install a LEWS under limited available financial funds. At the same time, however, the developed scenarios show the complexity of planning and political decisions: if one decides for the most cost-effective way or to protect the most people, the most endangered areas are not necessarily instrumented. Moreover, decisions may mean reducing or increasing inequalities, depending on whether precarious settlements are preferred or not. Every decision implies advantages and disadvantages – science can at least support the choice in an information-driven way. The planning or political decision itself, however, must be fought out according to democratic processes.

This study successfully demonstrated the feasibility of accurately mapping landslide susceptibility by using a data-driven approach that integrates remotely sensed data and ancillary datasets. The application of a non-parametric random

forest model allowed for the incorporation of multiple conditioning factors, capturing non-linear relationships within the data. This approach overcame the limitation posed by the non-normal distribution of factors and the requirement for prior knowledge of complex interactions among them. Consequently, an updated landslide susceptibility map was generated, complementing the city’s official hazard map from 2014. The new map incorporated new instances of mass movement obtained from landslide inventories and remote sensing.

A novel contribution was done by transparently estimating the cost of instrumenting the monitoring component of LEWSs, which, to the best of the authors’ knowledge, has not been previously reported. This new information is valuable for decision-makers involved in disaster risk reduction, where LEWSs play a crucial role (UN, 2015). The proposed automatic monitoring system was designed to be highly modular, scalable, and customizable, aligning with the objectives of community-based LEWSs (Gumiran et al., 2019). This design approach facilitated the transferability study, allowing for area-wide implementation across the entire city based on the experiences gained from installing a LEWS in one neighbourhood. Moreover, the system has the potential to be easily transferred to other regions worldwide with similar characteristics such as densely populated and mountainous areas. Furthermore, being based on the open LoRa[®] standard, the system can leverage existing infrastructure (i.e. gateways with a cost of EUR 2200 each). This feature streamlines the transferability within a city and reduces costs when scaling up the systems.

The impact of various cost-effectiveness scenarios on the overall cost and the number of exposed and highly vulnerable populations when allocating a specific budget, highlighting the potential for optimization, was demonstrated. The combination of a highly detailed on-site warning system with city-wide information about susceptibility and population provides unique opportunities for researchers and decision-makers. From an economic standpoint, it is possible to determine the most effective allocation of resources in terms of the cost-to-exposed-inhabitant ratio. The analysis offered a clear indication of where a LEWS can be the most cost effective. However, it is important to acknowledge that there are several additional factors that contribute significant value to the benefits but are difficult to quantify. These factors include reducing risks by increasing risk awareness, fostering social networks, and facilitating communication between informal dwellers and city planning agencies.

LEWSs have long been recognized for their effectiveness in providing timely warnings to at-risk communities. However, their widespread adoption has been hindered by high implementation costs. This study tackles this challenge by proposing a low-cost LEWS tailored for highly exposed areas, thus lowering the barriers to global adoption. To enhance affordability and sustainability, a wireless network of low-cost sensors equipped with solar panels is proposed. This not

only improves system maintenance but also optimizes cost effectiveness by strategically targeting areas with the highest vulnerability. By focusing on these areas, the LEWS can maximize its benefits while keeping implementation costs manageable. This approach ensures that resources are allocated where they are most needed, benefiting the local community and enhancing the overall effectiveness of the system. By combining innovative technology and cost optimization strategies, this study aims to promote the wider adoption of LEWS in landslide-prone regions. By doing so, it lowers the barriers associated with expensive implementation, ultimately making LEWS more accessible and beneficial to communities at risk.

However, there are still challenges and limitations to address. In terms of the landslide susceptibility map, the accuracy was affected by evaluating the probability map using a dichotomous variable (high-hazard or non-hazard). The generalization into a dichotomous value influenced the measured overall accuracy, especially considering the frequency of values ranging between 0.4 and 0.6, which were classified as either high hazard or non-hazard. Most of the misclassifications in the accuracy analysis occurred in the medium hazard class, which is here considered non-hazard. Additionally, misclassifications were observed in low-hazard areas with medium–high susceptibility values, as well as high-hazard areas with low susceptibility values. These discrepancies may arise from using two different sources as reference data for model training, which can lead to contradictions, particularly when community reports in the DAGRD inventory may not always pertain to landslides. For instance, areas with medium or low hazard levels in the POT 2014 hazard map, but with similar conditioning factors to areas with recent landslides in the inventories, could exhibit high susceptibility levels in the model, resulting in validation errors. It is essential to highlight that data-driven methods rely on the quality and veracity of the reference data, as well as on the conceptual approach. In this study, on the one hand, most of the landslides from inventories are reported by people, leading to a potential bias of higher landslide frequency in urban areas. However, since the focus is on implementing LEWS in urban areas, this bias is not critical to the study. Furthermore, all historic landslides in Medellín have a strong anthropic triggering factor, so it is logical to observe a higher density of landslide events in the urban areas. On the other hand, while the official hazard map is expected to be of high quality due to expert evaluation, a significant number of reported landslides between 2014 and 2021 occurred in – according to the hazard map of 2014 – low-hazard areas. These areas potentially include mass movements reported by citizens that may not necessarily be landslides. Another factor that may impact the results is the population increase along the urban–rural border since the creation of the official hazard map. Given the significant influence of anthropogenic factors on landslides in Medellín, this may account for the differences

between the generated landslide susceptibility map and the official landslide hazard map.

The selection of suitable exposed locations for the installation of LEWSs followed an iterative process using seeds of high susceptibility and exposure, along with thresholds set manually. These thresholds were established to identify the areas with the highest exposure based on population density and susceptibility while also limiting the number of initial seeds to a manageable quantity. However, it is important to acknowledge that the specific thresholds and the chosen model for mapping landslide susceptibility may have influenced the identification of exposed suitable sites in Medellín. Additionally, the size of the sites was constrained based on the previous experience from Bello Oriente. These factors could impact the size, complexity, and overall accuracy of the identified sites, consequently affecting the cost estimation. Nevertheless, the final selection of more than thirty locations covers a significant portion of highly populated exposed locations in Medellín, encompassing a diverse range of sizes and complexities. This allows for comparability in cost estimation across different sites. It is important to note that the proposed thresholds and sizes are adapted to the specific context of Medellín and should be adjusted accordingly in different regions.

The cost estimation for the proposed system is inherently subject to uncertainties, both in the cost function itself and the underlying data. An important aspect to consider is that the proposed system has only been implemented once in Bello Oriente, which possesses unique characteristics such as being an informal settlement with low-quality building structures, medium building density, steep slopes, and ample open spaces. The cost and density of sensors are based solely on the experiences at this specific site. While the cost of instruments and working hours have been provided for this case, extrapolating these costs to other areas involves certain assumptions and may not account hidden costs that could arise in different conditions. However, this cannot be assessed with the current knowledge. Additionally, local circumstances and the availability of trained personnel also contribute to the overall cost. While the absolute costs might have significant uncertainties, the proposed cost function allows for the evaluation of relative cost differences between multiple sites. Therefore, the proposed approach can be used to identify prioritized areas within a city for the initial installation of new LEWSs based on cost-effectiveness considerations.

The implementation of the LEWS prototype in Bello Oriente was a collaborative effort involving academia, private companies, government agencies, local civil society organizations, and the local community. The active involvement of these stakeholders played a vital role in addressing a range of challenges, including social conflict, insufficient risk awareness, limited political commitment, changes in local government, resources constraints, and inadequate territorial planning (Werthmann, 2023). This means that the implementation of a LEWS must always be seen as a socio-technical

challenge. This involves costs that were not considered in the technical estimates.

Given the complexity of implementing a LEWS, it is important to emphasize that the estimated costs presented in this study solely pertain to the installation of the monitoring instruments. Therefore, expenses related to system maintenance, including significant working hours, additional instruments, and protective measures for the instruments, have not been accounted for. The costs of warning elements, safety signs for emergency routes and meeting points, community engagement, and collaboration with various sectors (government, local civil society organizations, etc.), as well as the operational aspect of the LEWS, have also been excluded from the results. Finally, it is crucial to emphasize that beyond financial aspects, efficient implementation and maintenance, and cooperation among diverse stockholders, the success of the LEWS relies on social work and community engagement. The cultivation of risk awareness and fostering trust in the system define the willingness of individuals at risk to actively participate in the process and respond promptly to warnings. This social aspect is essential for ensuring the long-term sustainability of the LEWS after the monitoring instruments have been installed.

5 Conclusions

The implementation of multi-hazard EWSs is crucial in mitigating disaster risks and safeguarding lives, as emphasized by the Sendai Framework for Disaster Risk Reduction 2015–2030 (UN, 2015). This is particularly significant in countries like Colombia, where a considerable proportion of the population is exposed to landslide hazards and is highly vulnerable.

Building upon the insights gained from the LEWS installed in Medellín through the Inform@Risk project, this study identified 32 highly exposed areas in the city suitable for the installation of a highly modular, scalable, and customizable LEWS. By estimating the required investment for the monitoring component of these systems, the city would need approximately EUR 5 to EUR 41 per protected inhabitant, varying based on site-specific characteristics.

In an approach for prioritizing the selection of exposed sites for a LEWS considering various cost-effectiveness scenarios, budget constraints, landslide susceptibility, total population exposed, and territorial planning agenda, an informed decision-making is supported by science. These findings are intended to provide guidance to decision-makers and support disaster risk reduction efforts not only in Medellín, Colombia, but also in other regions facing similar challenges. By leveraging the lessons learned from this study, policy-makers and stakeholders can make informed decisions to enhance resilience and reduce the impact of landslides, contributing to the broader goals of disaster risk reduction.

Data availability. All produced data can be provided by the corresponding author upon request.

Supplement. The supplement related to this article is available online at: <https://doi.org/10.5194/nhess-23-3913-2023-supplement>.

Author contributions. Conceptualization: MS and HT; data curation: MS and MK; formal analysis: MS, MK, and MG; methodology: MS; landslide susceptibility modelling: MS; cost function development: MG and JS; writing – original draft: MS; writing – review and editing: all; supervision: HT and JS; funding acquisition: HT, CGL, and JS. All authors have read and agreed to the published version of the manuscript.

Competing interests. The data management and analysis platform (AlpGeorisk ONLINE) used in the landslide early warning system in Bello Oriente is developed and commercially distributed by AlpGeorisk (John Singer). The contact author has declared that none of the authors has any other competing interests.

Disclaimer. Publisher's note: Copernicus Publications remains neutral with regard to jurisdictional claims made in the text, published maps, institutional affiliations, or any other geographical representation in this paper. While Copernicus Publications makes every effort to include appropriate place names, the final responsibility lies with the authors.

Special issue statement. This article is part of the special issue "Multi-risk assessment in the Andes region". It is not associated with a conference.

Acknowledgements. This research is part of the Inform@Risk project (Strengthening the Resilience of Informal Settlements against Slope Movements). We thank Leibniz Universität Hannover, Technische Hochschule Deggendorf, Technische Universität München, Deutsches Zentrum für Luft- und Raumfahrt e.V., AlpGeorisk, Sachverständigenbüro für Luftbildauswertung und Umweltfragen, EAFIT University–URBAM, Alcaldía de Medellín, Área Metropolitana del Valle de Aburrá, Sistema de Alerta Temprana del Valle de Aburrá, Sociedad Colombiana de Geología, Colectivo Tejarañas, Corporación Convivamos, Fundación Palomá, and Red Barrial Bello Oriente for their support.

Financial support. This research was funded by the German Federal Ministry of Education and Research as part of the FONAClient II initiative, grant number 03G0883A-F. The funders had no role in study design, data collection and analysis, decision to publish, or preparation of the manuscript.

The article processing charges for this open-access publication were covered by the German Aerospace Center (DLR).

Review statement. This paper was edited by Rodrigo Cienfuegos and reviewed by two anonymous referees.

References

- Abu El-Magd, S. A., Ali, S. A., and Pham, Q. B.: Spatial modeling and susceptibility zonation of landslides using random forest, naïve bayes and K-nearest neighbor in a complicated terrain, *Earth Sci. Inform.*, 14, 1227–1243, <https://doi.org/10.1007/s12145-021-00653-y>, 2021.
- Ado, M., Amitab, K., Maji, A. K., Jasińska, E., Gono, R., Leonowicz, Z., and Jasiński, M.: Landslide Susceptibility Mapping Using Machine Learning: A Literature Survey, *Remote Sens.*, 14, 3029, <https://doi.org/10.3390/rs14133029>, 2022.
- Alcaldía de Medellín: Plan de ordenamiento territorial, Acuerdo 48 de 2014, Medellín, 2014a.
- Alcaldía de Medellín: Revisión y ajuste del Plan de Ordenamiento Territorial de Medellín, Evaluación y Seguimiento – Tomo IIIB, Versión 3-Concertación con Autoridades Ambientales, Medellín, 2014b.
- Alcaldía de Medellín: GeoMedellín, <https://www.medellin.gov.co/geomedellin/> (last access: 4 July 2023), 2023.
- Ali, S. A., Parvin, F., Vojteková, J., Costache, R., Linh, N. T. T., Pham, Q. B., Vojtek, M., Gigovici, L., Ahmad, A., and Ghorbani, M. A.: GIS-based landslide susceptibility modeling: A comparison between fuzzy multi-criteria and machine learning algorithms, *Geosci. Front.*, 12, 857–876, <https://doi.org/10.1016/j.gsf.2020.09.004>, 2021.
- AMVA: Datos Abiertos del Área Metropolitana Valle de Aburrá (AMVA), <https://datosabiertos.metropol.gov.co/> (last access: 4 July 2023), 2023.
- Antal, A., Guerreiro, P. M. P., and Cheval, S.: Comparison of spatial interpolation methods for estimating the precipitation distribution in Portugal, *Theor. Appl. Climatol.*, 145, 1193–1206, <https://doi.org/10.1007/s00704-021-03675-0>, 2021.
- Azarafza, M., Azarafza, M., Akgün, H., Atkinson, P. M., and Derakhshani, R.: Deep learning-based landslide susceptibility mapping, *Sci. Rep.*, 11, 24112, <https://doi.org/10.1038/s41598-021-03585-1>, 2021.
- Bostan, P. A., Heuvelink, G. B. M., and Akyurek, S. Z.: Comparison of regression and kriging techniques for mapping the average annual precipitation of Turkey, *Int. J. Appl. Earth Observ. Geoinf.*, 19, 115–126, <https://doi.org/10.1016/j.jag.2012.04.010>, 2012.
- Breiman, L.: Random Forests, *Mach. Learn.*, 45, 5–32, <https://doi.org/10.1023/A:1010933404324>, 2001.
- Breuninger, T., Menschik, B., Demharter, A., Gamperl, M., and Thuro, K.: Investigation of Critical Geotechnical, Petrological and Mineralogical Parameters for Landslides in Deeply Weathered Dunite Rock (Medellín, Colombia), *Int. J. Environ. Res. Pub. Health*, 18, 11141, <https://doi.org/10.3390/ijerph182111141>, 2021.
- Calderón-Guevara, W., Sánchez-Silva, M., Nitescu, B., and Villaraga, D. F.: Comparative review of data-driven landslide susceptibility models: case study in the Eastern Andes mountain range of Colombia, *Nat. Hazards*, 113, 1105–1132, <https://doi.org/10.1007/s11069-022-05339-2>, 2022.
- Cantarino, I., Carrion, M. A., Goerlich, F., and Martínez Ibañez, V.: A ROC analysis-based classification method for landslide susceptibility maps, *Landslides*, 16, 265–282, <https://doi.org/10.1007/s10346-018-1063-4>, 2019.
- Casagli, N., Frodella, W., Morelli, S., Tofani, V., Ciampalini, A., Intrieri, E., Raspini, F., Rossi, G., Tanteri, L., and Lu, P.: Spaceborne, UAV and ground-based remote sensing techniques for landslide mapping, monitoring and early warning, *Geoenviron. Dis.*, 4, 9, <https://doi.org/10.1186/s40677-017-0073-1>, 2017.
- Castro Bonilla, J. P.: Sistema de alerta temprana de deslizamiento para el fenómeno de movimiento en masa del sector Altos de la Estancia, B.S. thesis, Universidad Distrital Francisco José de Caldas, Bogotá, Colombia, 2021.
- DAGR: Base de datos de Visitas Técnicas [data set], Departamento Administrativo de Gestión del Riesgo de Desastres (DAGR), 2018.
- Departamento del Quindío: Desarrollo de prototipo sistema inteligente de alerta temprana para la prevención de desastres por remoción en masa, avenidas torrenciales e inundación en los municipios de Calarcá, Pijao y Salento, en el departamento del Quindío, 2018.
- DesInventar: DesInventar Sendai [data set], <https://db.desinventar.org/DesInventar/download.jsp> (last access: 1 March 2023), 2022.
- Eiras, C. G. S., Souza, J. R. G. de, Freitas, R. D. A., de Barella, C. F., and Pereira, T. M.: Discriminant analysis as an efficient method for landslide susceptibility assessment in cities with the scarcity of predisposition data, *Nat. Hazards*, 107, 1427–1442, <https://doi.org/10.1007/s11069-021-04638-4>, 2021.
- Erener, A., Mutlu, A., and Sebnem Düzgün, H.: A comparative study for landslide susceptibility mapping using GIS-based multi-criteria decision analysis (MCDA), logistic regression (LR) and association rule mining (ARM), *Eng. Geol.*, 203, 45–55, <https://doi.org/10.1016/j.enggeo.2015.09.007>, 2016.
- Gamperl, M., Singer, J., and Thuro, K.: Internet of Things Geosensor Network for Cost-Effective Landslide Early Warning Systems, *Sensors*, 21, 2609, <https://doi.org/10.3390/s21082609>, 2021.
- García, R. A. C., Oliveira, S. C., and Zêzere, J. L.: Assessing population exposure for landslide risk analysis using dasymetric cartography, *Nat. Hazards Earth Syst. Sci.*, 16, 2769–2782, <https://doi.org/10.5194/nhess-16-2769-2016>, 2016.
- Geiß, C., Schaub, A., Riedlinger, T., Dech, S., Zelaya, C., Guzmán, N., Hube, M. A., Arsanjani, J. J., and Taubenböck, H.: Joint use of remote sensing data and volunteered geographic information for exposure estimation: evidence from Valparaíso, Chile, *Nat. Hazards*, 86, 81–105, <https://doi.org/10.1007/s11069-016-2663-8>, 2017.
- Grasso, V. F.: The State of Early Warning Systems, in: *Reducing Disaster: Early Warning Systems For Climate Change*, edited by: Singh, A. and Zommers, Z., Springer Netherlands, Dordrecht, 109–125, https://doi.org/10.1007/978-94-017-8598-3_6, 2014.
- Gumiran, B. A. L., Moncada, F. M., Gasmen, H. J., Boyles-Panting, N. R., and Solidum, R. U.: Participatory capacities and vulnerabilities assessment: Towards the realisation of community-based early warning system for deep-seated landslides, *Jambá Journal of Disaster Risk Studies*, 11, a555, <https://doi.org/10.4102/jamba.v11i1.555>, 2019.
- Günther, A., Van Den Eeckhaut, M., Malet, J.-P., Reichenbach, P., and Hervás, J.: Climate-physiographically differentiated Pan-European landslide susceptibility assessment using spatial multi-criteria evaluation and transna-

- tional landslide information, *Geomorphology*, 224, 69–85, <https://doi.org/10.1016/j.geomorph.2014.07.011>, 2014.
- Guzzetti, F., Mondini, A. C., Cardinali, M., Fiorucci, F., Santangelo, M., and Chang, K.-T.: Landslide inventory maps: New tools for an old problem, *Earth-Sci. Rev.*, 112, 42–66, <https://doi.org/10.1016/j.earscirev.2012.02.001>, 2012.
- Guzzetti, F., Gariano, S. L., Peruccacci, S., Brunetti, M. T., Marchesini, I., Rossi, M., and Melillo, M.: Geographical landslide early warning systems, *Earth-Sci. Rev.*, 200, 102973, <https://doi.org/10.1016/j.earscirev.2019.102973>, 2020.
- Hallegatte, S.: A Cost Effective Solution to Reduce Disaster Losses in Developing Countries: Hydro-Meteorological Services, Early Warning, and Evacuation, The World Bank, <https://doi.org/10.1596/1813-9450-6058>, 2012.
- Huggel, C., Khabarov, N., Obersteiner, M., and Ramírez, J. M.: Implementation and integrated numerical modeling of a landslide early warning system: a pilot study in Colombia, *Nat. Hazards*, 52, 501–518, <https://doi.org/10.1007/s11069-009-9393-0>, 2010.
- Hungr, O., Fell, R., Couture, R., and Eberhardt, E. (Eds.): Estimating landslide motion mechanism, travel distance and velocity, in: *Landslide Risk Management*, CRC Press, 109–138, <https://doi.org/10.1201/9781439833711-7>, 2005.
- IPCC: *Climate Change 2022: Impacts, Adaptation and Vulnerability. Contribution of Working Group II to the Sixth Assessment Report of the Intergovernmental Panel on Climate Change*, edited by: Pörtner, H.-O., Roberts, D. C., Tignor, M., Poloczanska, E. S., Minterbeck, K., Alegría, A., Craig, M., Langsdorf, S., Löschke, S., Möller, V., Okem, A., and Rama, B., Cambridge University Press. Cambridge University Press, Cambridge, UK and New York, NY, USA, File Rep. 3056, <https://doi.org/10.1017/9781009325844>, 2022.
- Kühnl, M., Sapena, M., and Taubenböck, H.: Categorizing Urban Structural Types using an Object-Based Local Climate Zone classification Scheme in Medellín, Colombia, in: *Proceedings of REAL CORP 2021, 26th International Conference on Urban Development, Regional Planning and Information Society, CITIES 20.50 – Creating Habitats for the 3rd Millennium: Smart – Sustainable – Climate Neutral*, Wien, Austria, 173–182, 2021.
- Kühnl, M., Sapena, M., Wurm, M., Geiß, C., and Taubenböck, H.: Multitemporal landslide exposure and vulnerability assessment in Medellín, Colombia, *Nat Hazards* 119, 883–906, <https://doi.org/10.1007/s11069-022-05679-z>, 2023.
- Marchezini, V., Horita, F. E. A., Matsuo, P. M., Trajber, R., Trejo-Rangel, M. A., and Olivato, D.: A Review of Studies on Participatory Early Warning Systems (P-EWS): Pathways to Support Citizen Science Initiatives, *Front. Earth Sci.*, 6, 184, <https://doi.org/10.3389/feart.2018.00184>, 2018.
- Metzger, N., Vargas-Muñoz, J. E., Daudt, R. C., Kellenberger, B., Whelan, T. T.-T., Ofli, F., Imran, M., Schindler, K., and Tuia, D.: Fine-grained population mapping from coarse census counts and open geodata, *Sci Rep*, 12, 20085, <https://doi.org/10.1038/s41598-022-24495-w>, 2022.
- Modugno, S., Johnson, S. C. M., Borrelli, P., Alam, E., Bezak, N., and Balzter, H.: Analysis of human exposure to landslides with a GIS multiscale approach, *Nat. Hazards*, 112, 387–412, <https://doi.org/10.1007/s11069-021-05186-7>, 2022.
- Mondini, A. C., Guzzetti, F., Reichenbach, P., Rossi, M., Cardinali, M., and Ardizzone, F.: Semi-automatic recognition and mapping of rainfall induced shallow landslides using optical satellite images, *Remote Sens. Environ.*, 115, 1743–1757, <https://doi.org/10.1016/j.rse.2011.03.006>, 2011.
- Müller, I., Taubenböck, H., Kuffer, M., and Wurm, M.: Misperceptions of Predominant Slum Locations? Spatial Analysis of Slum Locations in Terms of Topography Based on Earth Observation Data, *Remote Sens.*, 12, 2474, <https://doi.org/10.3390/rs12152474>, 2020.
- Nikoobakht, S., Azarafza, M., Akgün, H., and Derakhshani, R.: Landslide Susceptibility Assessment by Using Convolutional Neural Network, *Appl. Sci.*, 12, 5992, <https://doi.org/10.3390/app12125992>, 2022.
- Ospina-Gutiérrez, J. P. and Aristizábal, E.: Aplicación de inteligencia artificial y técnicas de aprendizaje automático para la evaluación de la susceptibilidad por movimientos en masa, *revmexcg*, 38, 43–54, <https://doi.org/10.22201/cgeo.20072902e.2021.1.1605>, 2021.
- Palacio Cordoba, J., Mergili, M., and Aristizábal, E.: Probabilistic landslide susceptibility analysis in tropical mountainous terrain using the physically based r.slope.stability model, *Nat. Hazards Earth Syst. Sci.*, 20, 815–829, <https://doi.org/10.5194/nhess-20-815-2020>, 2020.
- Pourghasemi, H. R., Sadhasivam, N., Amiri, M., Eskandari, S., and Santosh, M.: Landslide susceptibility assessment and mapping using state-of-the art machine learning techniques, *Nat. Hazards*, 108, 1291–1316, <https://doi.org/10.1007/s11069-021-04732-7>, 2021.
- Reddy, G. P. O., Kumar, N., Sahu, N., and Singh, S. K.: Evaluation of automatic drainage extraction thresholds using ASTER GDEM and Cartosat-1 DEM: A case study from basaltic terrain of Central India, *The Egyptian Journal of Remote Sensing and Space Science*, 21, 95–104, <https://doi.org/10.1016/j.ejrs.2017.04.001>, 2018.
- Reinoso Jerez, C. A.: Diseño y construcción de un prototipo de sistema de sensores inalámbricos para alerta temprana de deslaves, MS thesis, Pontificia Universidad Católica de Ecuador, Quito, Ecuador, 2013.
- Rogers, D. and Tsirkunov, V.: Global assessment report on disaster risk reduction: costs and benefits of early warning systems, File Rep., Washington, D.C.: World Bank Group, <http://documents.worldbank.org/curated/en/609951468330279598/Global-assessment-report-on-disaster-risk-reduction-costs-and-benefits-of-early-warning-systems>, 2011.
- Ruiz Peña, G. L., Navarro Alarcón, S. del R., Chaparro Cordón, J. L., Gamboa Rodríguez, C. A., Ramírez Hernández, K. C., Camargo Holguín, B. L., Trejos González, G. A., and Pérez Cerón, R.: Las amenazas por movimientos en masa de Colombia, una visión a escala 1:100.000, Servicio Geológico Colombiano, <https://doi.org/10.32685/9789589952887>, 2017.
- Saaty, T.: *The analytic hierarchy process: planning, priority setting, resource allocation*, McGraw Hill, New York, ISBN 978-0070543713, 1980.
- Sapena, M., Kühnl, M., Wurm, M., Patino, J. E., Duque, J. C., and Taubenböck, H.: Empiric recommendations for population disaggregation under different data scenarios, *PLoS ONE*, 17, e0274504, <https://doi.org/10.1371/journal.pone.0274504>, 2022.
- Segoni, S., Serengil, Y., and Aydin, F.: A prototype landslide early warning system in Rize (Turkey): analyzing recent impacts to design a safer future, *Landslides*, 20, 683–694, <https://doi.org/10.1007/s10346-022-01988-3>, 2023.

- SIATA: Sistema de Alerta Temprana de Medellín y el Valle de Aburrá [data set], https://siata.gov.co/siata_nuevo/ (last access: 4 July 2023), 2023
- SIMMA: Sistema de Información de Movimientos en Masa [data set], <https://simma.sgc.gov.co/> (last access: 1 March 2023), 2022.
- Singer, J. and Thuro, K.: Development of a continuous 3D-monitoring system for unstable slopes using Time Domain Reflectometry, IAEG2006 Paper number 495, 8 pp., 2006.
- Singer, J., Thuro, K., Gamperl, M., Breuninger, T., and Menschik, B.: Technical Concepts for an Early Warning System for Rainfall Induced Landslides in Informal Settlements, in: Understanding and Reducing Landslide Disaster Risk: Volume 3 Monitoring and Early Warning, edited by: Casagli, N., Tofani, V., Sassa, K., Bobrowsky, P. T., and Takara, K., Springer International Publishing, Cham, 209–215, https://doi.org/10.1007/978-3-030-60311-3_24, 2021.
- Skilodimou, H. D., Bathrellos, G. D., Chousianitis, K., Youssef, A. M., and Pradhan, B.: Multi-hazard assessment modeling via multi-criteria analysis and GIS: a case study, *Environ Earth Sci.*, 78, 47, <https://doi.org/10.1007/s12665-018-8003-4>, 2019.
- Taalab, K., Cheng, T., and Zhang, Y.: Mapping landslide susceptibility and types using Random Forest, *Big Earth Data*, 2, 159–178, <https://doi.org/10.1080/20964471.2018.1472392>, 2018.
- Tarboton, D. G., Bras, R. L., and Rodriguez-Iturbe, I.: On the extraction of channel networks from digital elevation data, *Hydrol. Process.*, 5, 81–100, <https://doi.org/10.1002/hyp.3360050107>, 1991.
- Taubenböck, H., Post, J., Roth, A., Zosseder, K., Strunz, G., and Dech, S.: A conceptual vulnerability and risk framework as outline to identify capabilities of remote sensing, *Nat. Hazards Earth Syst. Sci.*, 8, 409–420, <https://doi.org/10.5194/nhess-8-409-2008>, 2008.
- Thiebes, B., Bell, R., Glade, T., Jäger, S., Mayer, J., Anderson, M., and Holcombe, L.: Integration of a limit-equilibrium model into a landslide early warning system, *Landslides*, 11, 859–875, <https://doi.org/10.1007/s10346-013-0416-2>, 2014.
- Thuro, K., Singer, J., Festl, J., Wunderlich, T., Wasmeier, P., Reith, C., Heunecke, O., Glabsch, J., and Schuhbäck, S.: 25 New landslide monitoring techniques – developments and experiences of the alpEWAS project, *J. Appl. Geodesy*, 4, 69–90, <https://doi.org/10.1515/jag.2010.008>, 2010.
- Thuro, K., Wunderlich, T., Heunecke, O., Singer, J., Wasmeier, P., Schuhbäck, S., Festl, J., Reith, C., and Glabsch, J.: Low Cost 3D Early Warning System for Alpine Instable Slopes: The Aggenalm Landslide Monitoring System, in: *Early Warning for Geological Disasters*, edited by: Wenzel, F. and Zschau, J., Springer Berlin Heidelberg, Berlin, Heidelberg, 289–306, https://doi.org/10.1007/978-3-642-12233-0_15, 2014.
- Thuro, K., Singer, J., Menschik, B., Breuninger, T., and Gamperl, M.: Development of an early warning system for landslides in the tropical Andes (Medellín; Colombia), *Geomechanics and Tunneling*, 13, 103–115, <https://doi.org/10.1002/geot.201900071>, 2020.
- Uchimura, T., Towhata, I., Wang, L., Nishie, S., Yamaguchi, H., Seko, I., and Qiao, J.: Precaution and early warning of surface failure of slopes using tilt sensors, *Soils Foundat.*, 55, 1086–1099, <https://doi.org/10.1016/j.sandf.2015.09.010>, 2015.
- UN: Sendai Framework for Disaster Risk Reduction 2015–2030, File Rep., <https://www.undrr.org/publication/sendai-framework-disaster-risk-reduction-2015-2030>, (last access 13 July 2023), 2015.
- Universidad Nacional de Colombia: Amenaza, Vulnerabilidad y riesgo por movimientos en masa, avenidas torrenciales e inundaciones en el valle de aburrá, Formulación de propuestas de gestión, informe final, convenio 4800002397 de 2007, File Rep., 2009.
- Vojtek, M., Vojteková, J., Costache, R., Pham, Q. B., Lee, S., Arshad, A., Sahoo, S., Linh, N. T. T., and Anh, D. T.: Comparison of multi-criteria-analytical hierarchy process and machine learning-boosted tree models for regional flood susceptibility mapping: a case study from Slovakia, *Geomat. Nat. Haz. Risk*, 12, 1153–1180, <https://doi.org/10.1080/19475705.2021.1912835>, 2021.
- Werthmann, C.: Reporting from the front, *Nat. Hazards*, 119, 1145–1148, <https://doi.org/10.1007/s11069-023-05815-3>, 2023.
- Werthmann, C. and Echeverri, A.: Rehabitar La Montaña: Estrategias y procesos para un hábitat sostenible en las laderas de Medellín, Universidad EAFIT, File Rep., ISBN 978-958-8719-37-5, 2013.
- Werthmann, C., Sapena, M., Kühnl, M., Singer, J., Garcia, C., Menschik, B., Schäfer, H., Schröck, S., Seiler, L., Thuro, K., and Taubenböck, H.: Inform@Risk. The Development of a Prototype for an Integrated Landslide Early Warning System in an Informal Settlement: the Case of Bello Oriente in Medellín, Colombia, *Nat. Hazards Earth Syst. Sci. Discuss.* [preprint], <https://doi.org/10.5194/nhess-2023-53>, in review, 2023.
- WMO: Multi-hazard Early Warning Systems: A Checklist, File Rep., <https://library.wmo.int/idurl/4/55893> (last access 13 July 2023), 2018.
- World Bank: Disaster Risk Management in Latin America and the Caribbean Region: GFDRR Country Notes, World Bank, <https://doi.org/10.1596/27336>, 2012.