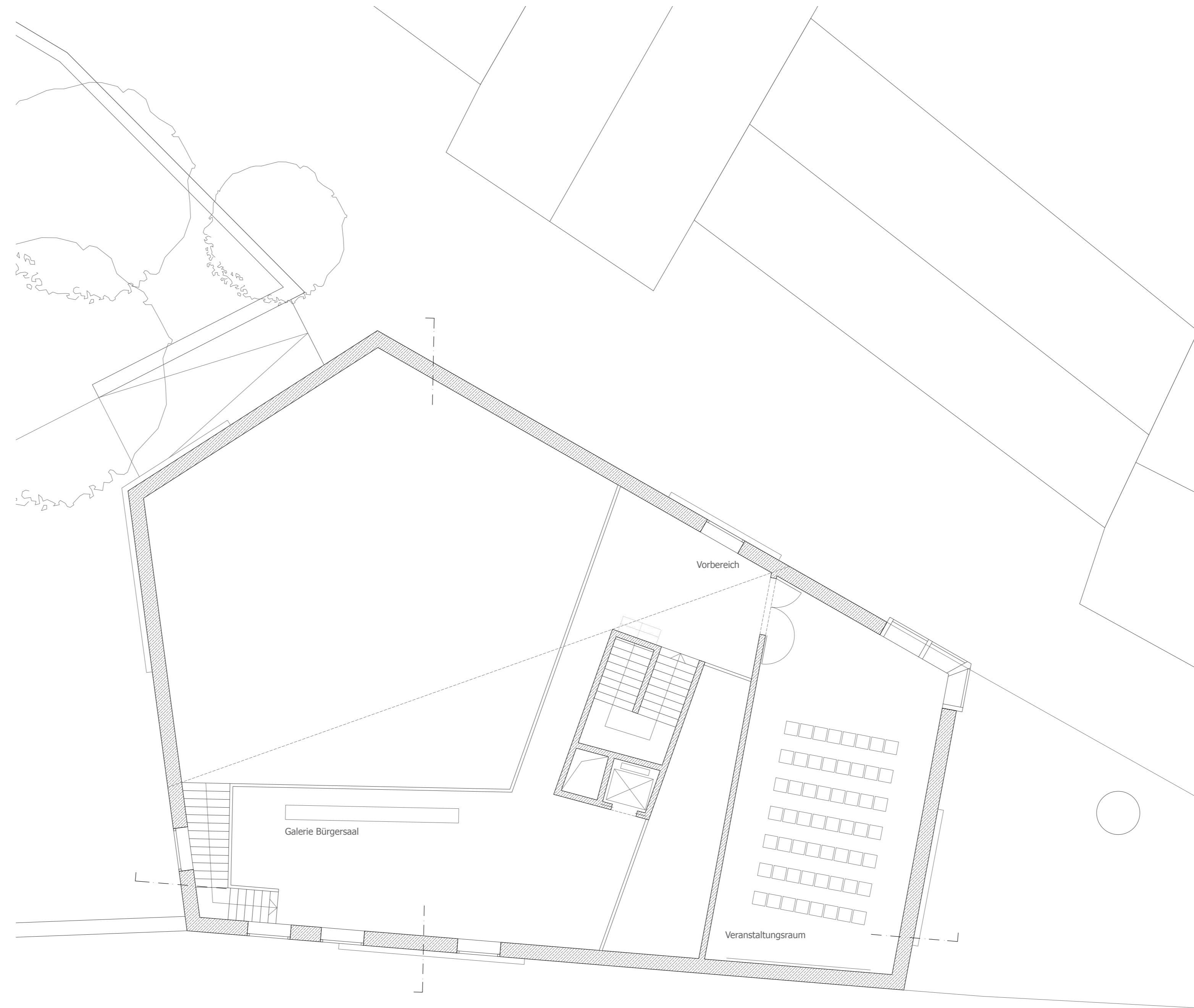
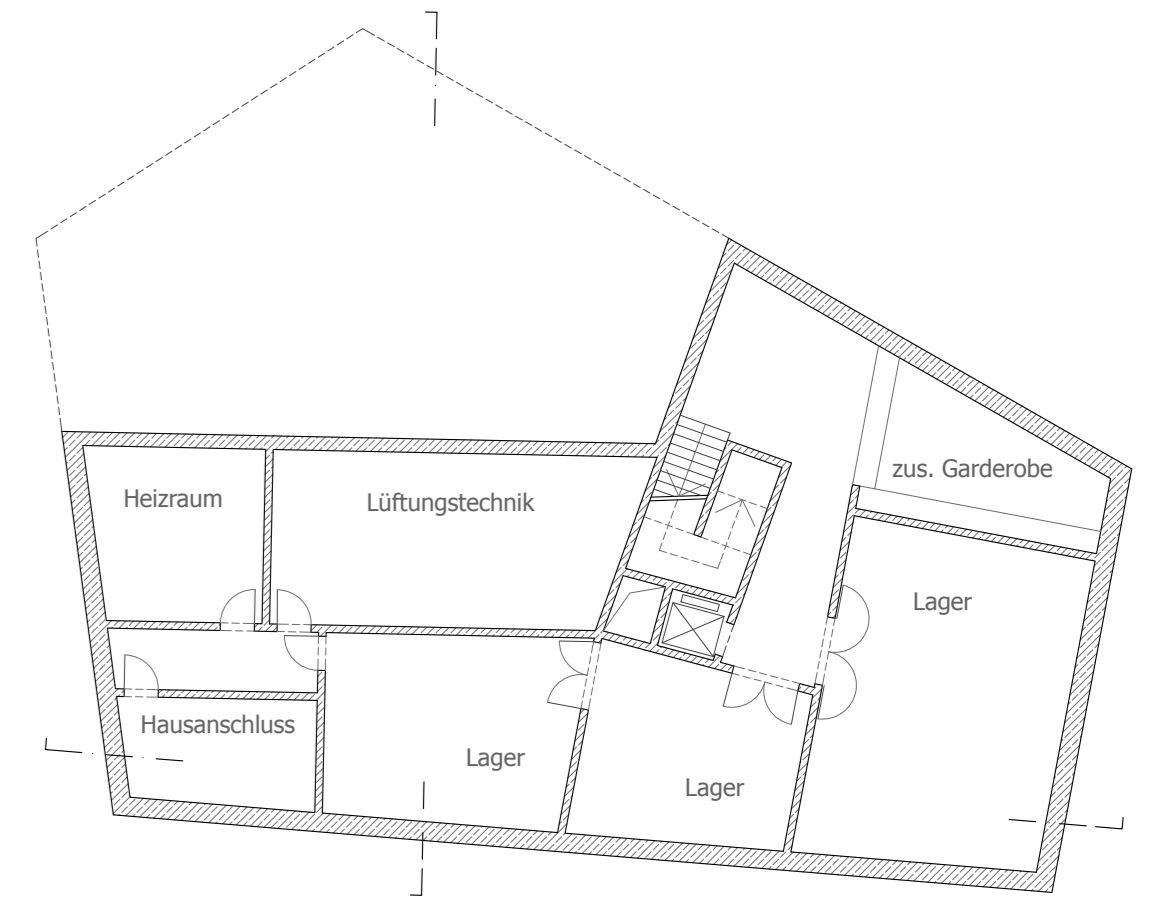


Grundriss 1. Obergeschoss 1:100



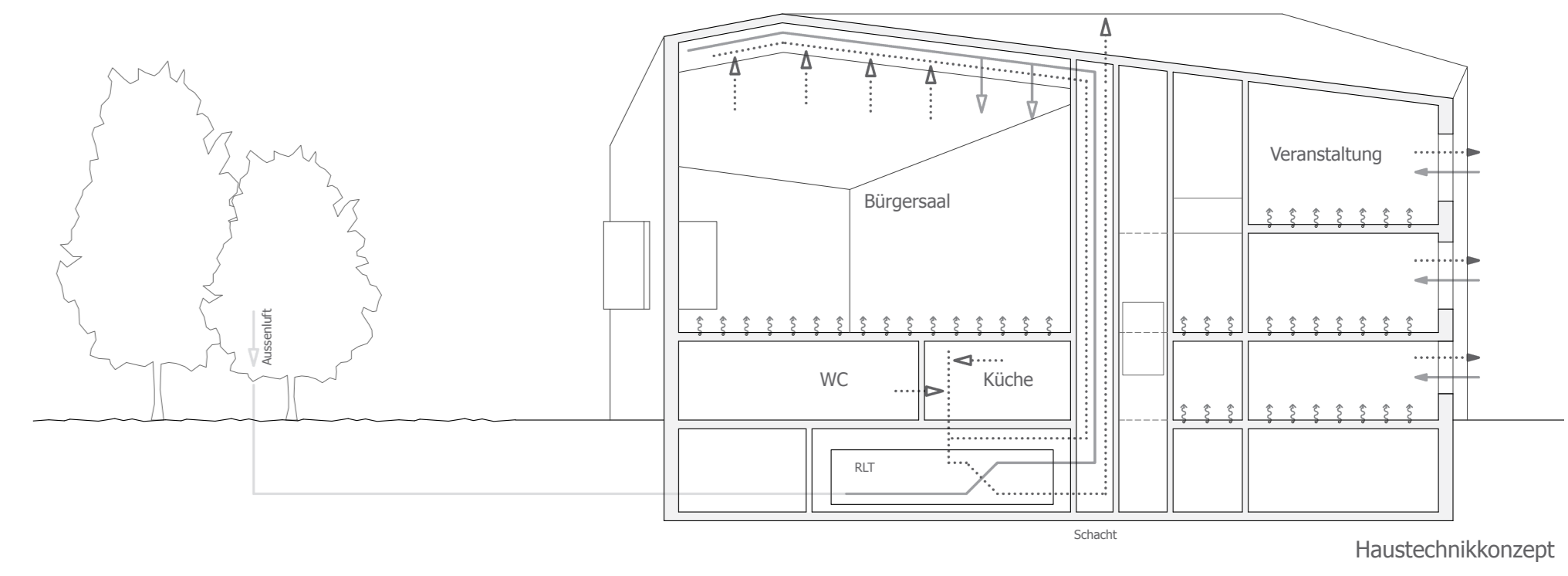
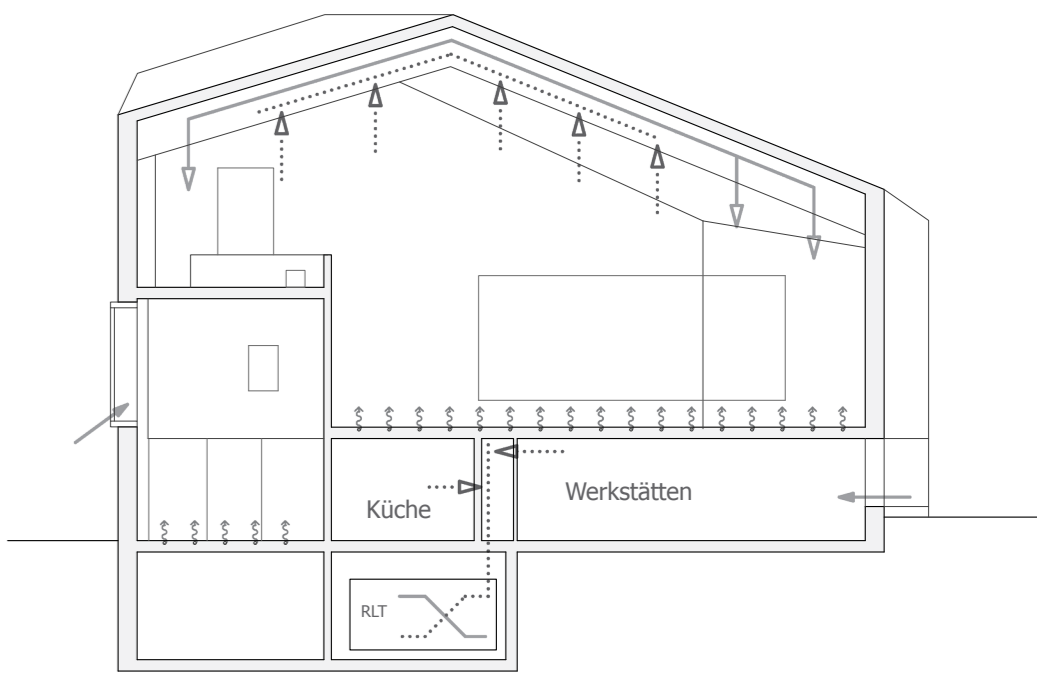
Grundriss 2. Obergeschoss 1:100



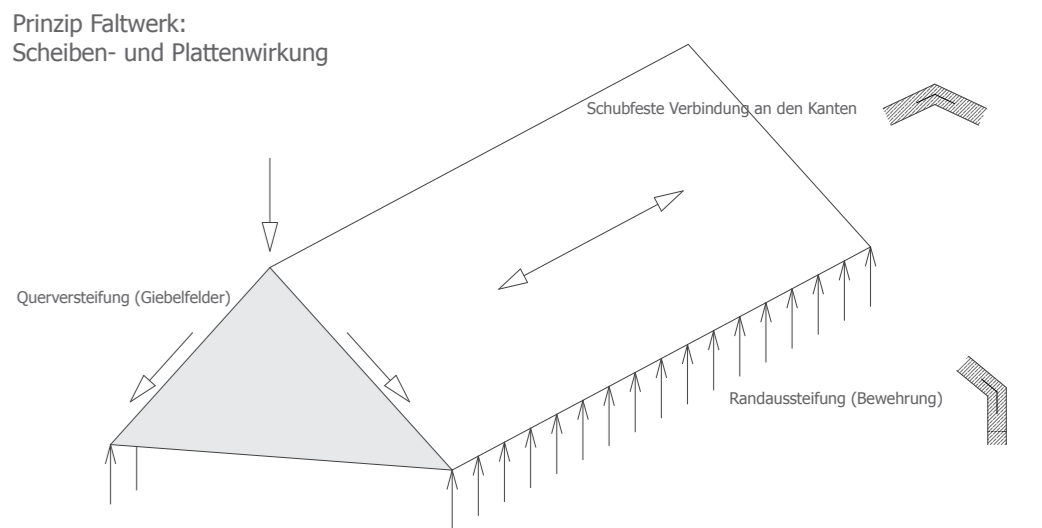
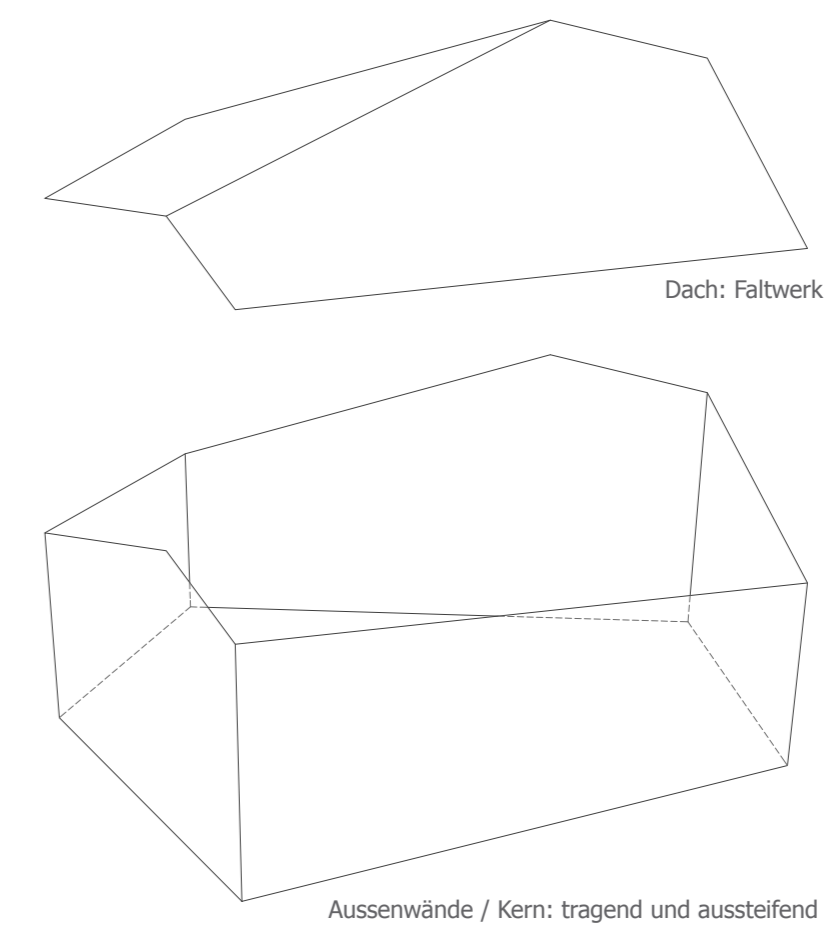
Grundriss Kellergeschoss 1:200

BGF = 1050 m<sup>2</sup>  
Kubatur = 5500 m<sup>3</sup>

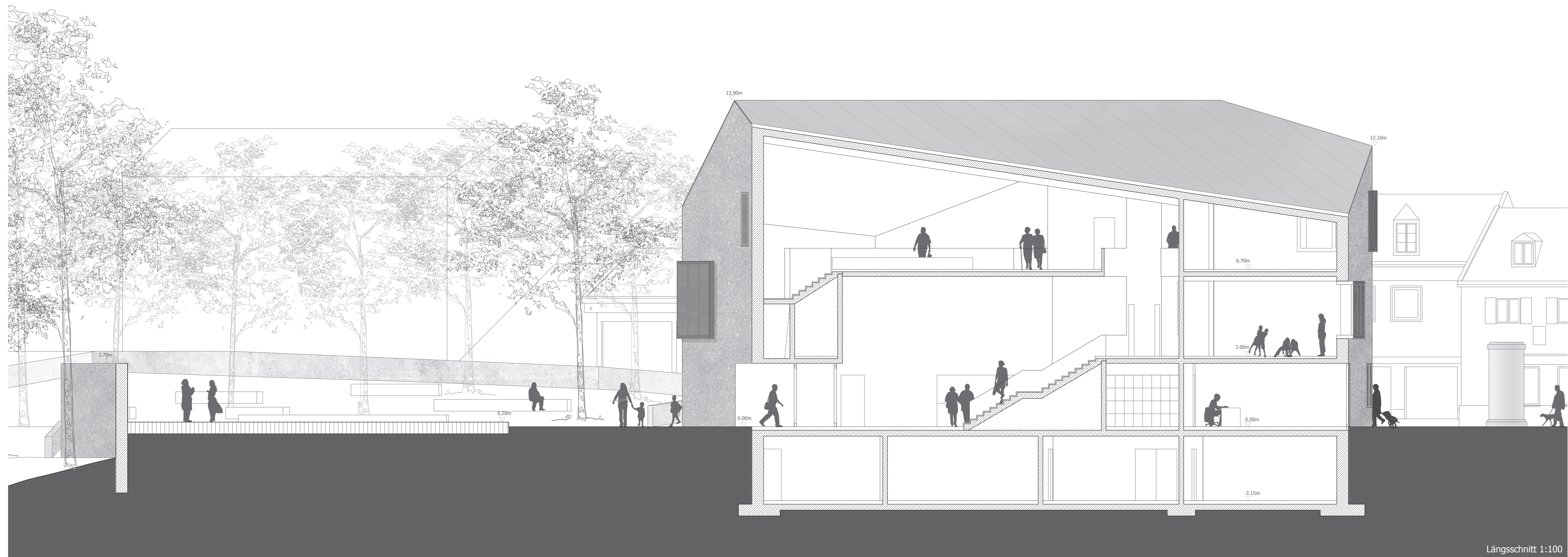
- Aussenluft
- mechanische Abluft
- mechanische Zuluft
- natürliche Abluft
- natürliche Zuluft
- ↑ Fußbodenheizung (Nutzungsflexibilität)



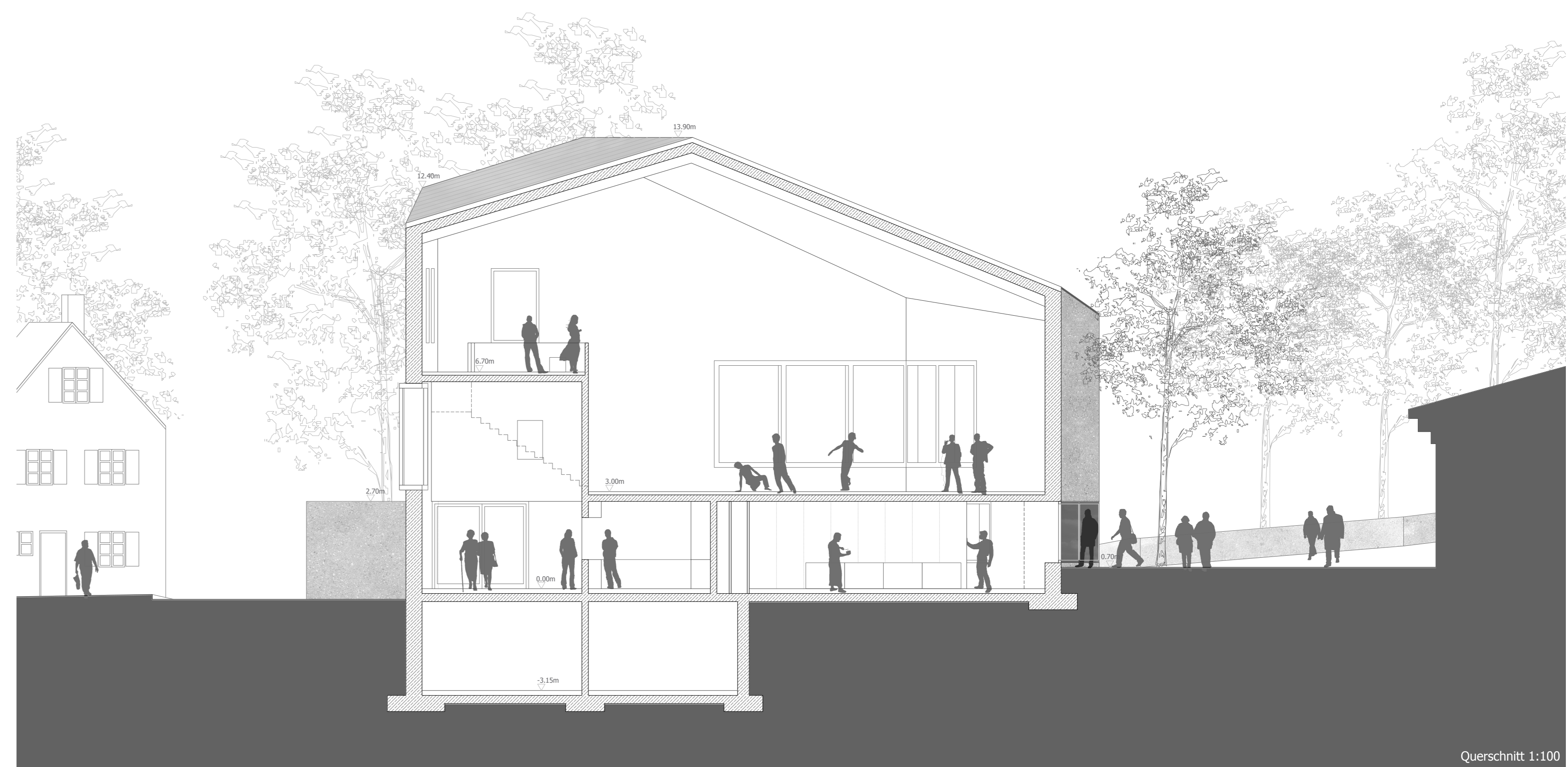
Haustechnikkonzept



Statikkonzept



Längsschnitt 1:100



Querschnitt 1:100