

# Recent activities on orbit determination for altimetry satellites at DGFI-TUM

Sergei Rudenko, Mathis Bloßfeld and Julian Zeitlhöfler

Deutsches Geodätisches Forschungsinstitut (DGFI-TUM)  
Technische Universität München

IDS Analysis Working Group Virtual Meeting, 14 June 2022

# Contents

- Major DOGS-OC updates in April 2021 – May 2022
- Station-dependent satellite laser ranging measurement correction model for TOPEX-Poseidon
- Some results on SLR and DORIS data-based orbits derived at DGFI-TUM
- A new tool to compute and analyze satellite orbit differences
- Some results of the comparison of various orbit solutions
- Conclusions

## Major DOGS-OC updates in April 2021 – May 2022

- Import and processing of DORIS observations were updated.
- Treatment of wavelength-specific SLR range biases was refined.
- Algorithm for modeling the satellite attitude was further optimized based on Bloßfeld et al. (2020).
- EIGEN-GRGS.RL04.MEAN-FIELD Earth's time-variable gravity field model (Lemoine et al., 2019) was implemented.
- Update of existing and implementation of the new thermosphere model NRLMSIS 2.0 (Emmert et al., 2021) were performed.
- A new station-dependent satellite laser ranging (SLR) measurement correction model for TOPEX/Poseidon has been developed (Zeitlhöfler et al., submitted, in review).
- Observed GFZ geomagnetic storm and solar flux indices (Matzka et al., 2021) are now used.
- Tests on optimal parametrization have been performed.

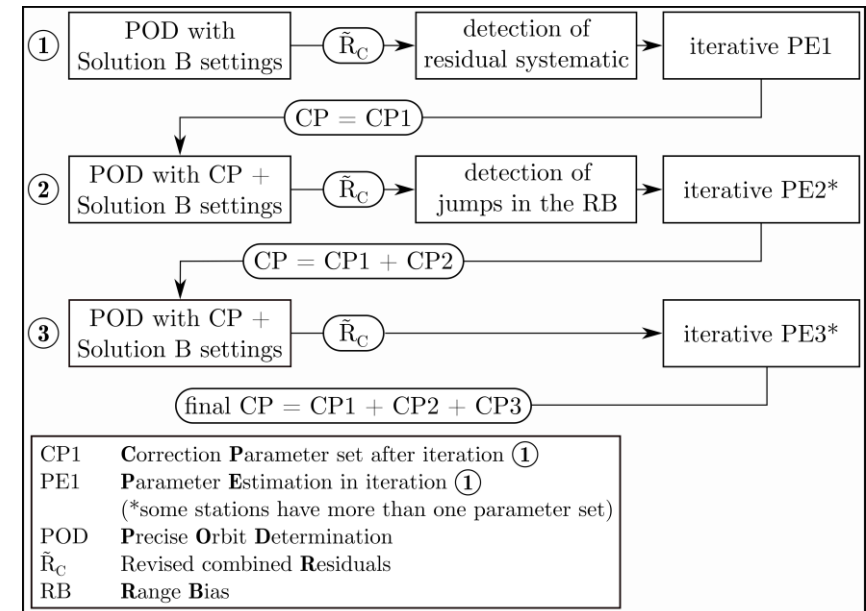
# Station-dependent SLR measurement correction model for TOPEX (1)

- The large dimensions of the laser retroreflector array cause the main limiting factor of the POD of TOPEX/Poseidon (T/P)
- Iterative least square adjustment of system-dependent measurement correction functions
- For each CDDIS SOD that tracked T/P, a set of **six parameters** is estimated combined in the correction function  $K(x)$ :

$$K(x) = C_0 + [G_0 \cos \alpha + G_{90} \sin \alpha] \sin i + X_1 \sin i + X_2 \sin^2 i + X_3 \sin^3 i ,$$

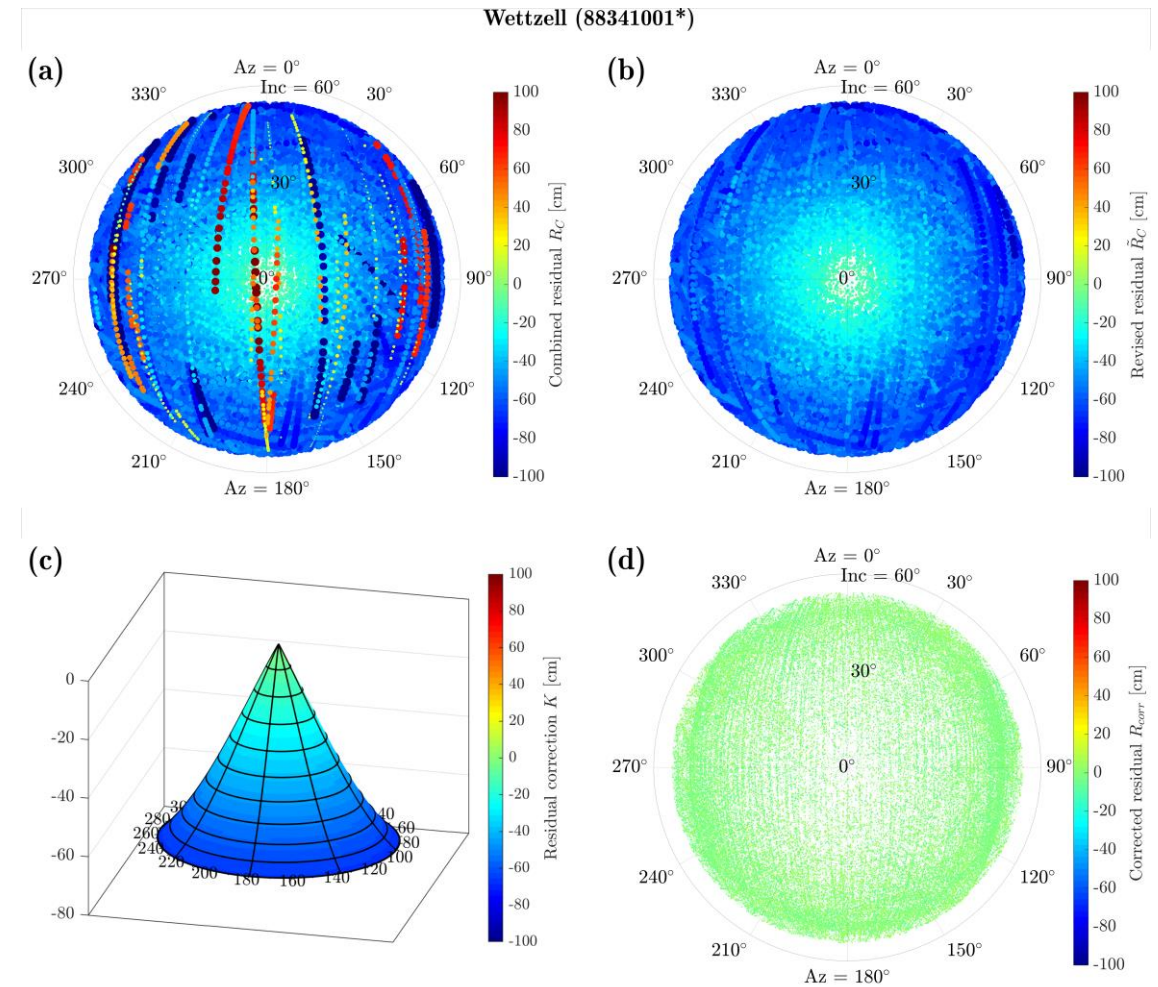
with:

- $C_0$  correction offset [cm]
- $G_0$  gradient in the  $0^\circ$  azimuth direction in the LRA frame [cm]
- $G_{90}$  gradient in the  $90^\circ$  azimuth direction in the LRA frame [cm]
- $X_{1/2/3}$  coefficient for the linear/quadratic/cubic polynomial of  $i$  [cm]
- $\alpha, i$  azimuth and incidence angle of the SLR observation in the LRA frame [°]



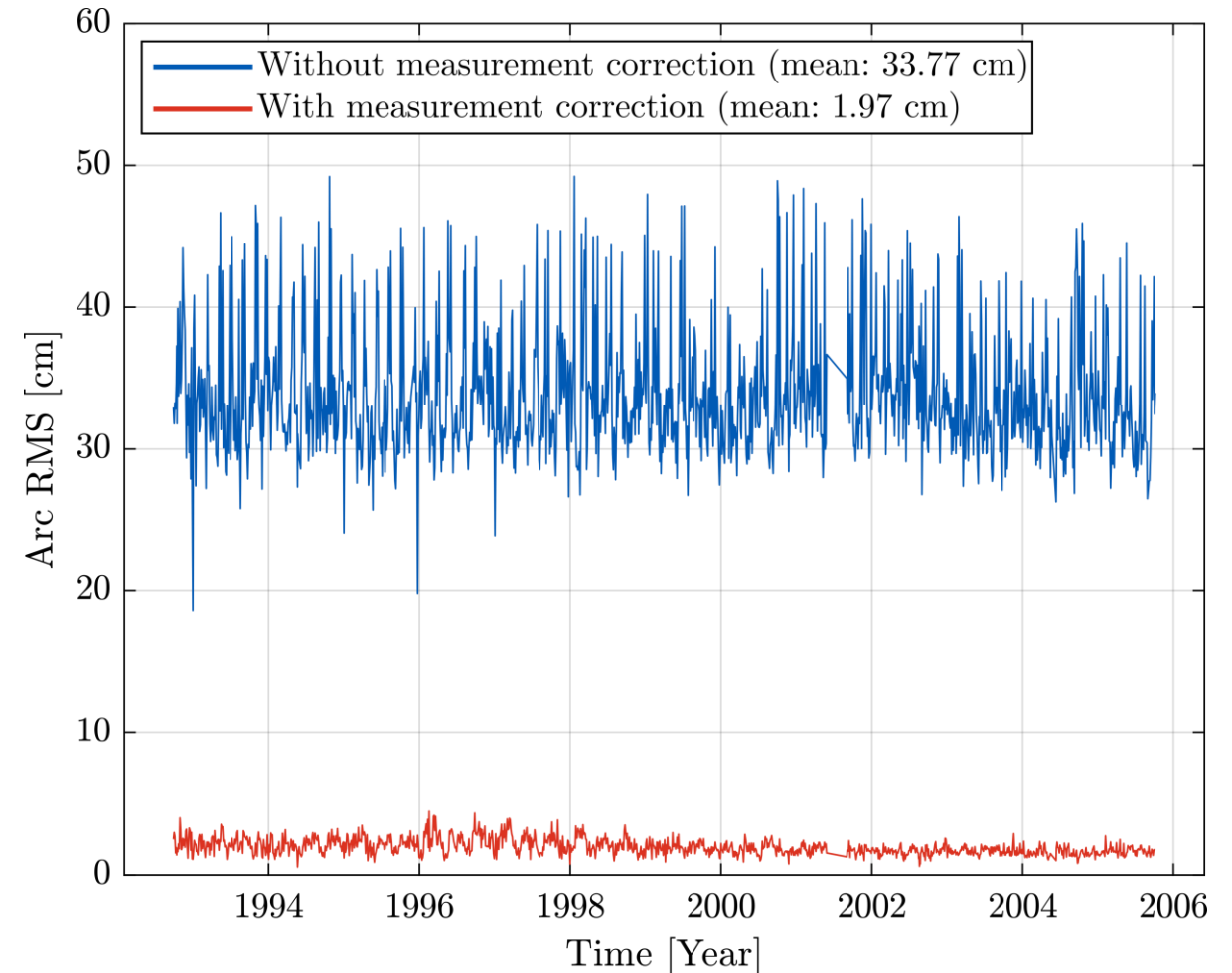
# Station-dependent SLR measurement correction model for TOPEX (2)

- The correction function with the system-individual parameters improves the SLR measurement and removes any azimuth or incidence dependency
- (a) residuals of SLR observations of the station Wettzell (88341001) in the LRA frame
- (b) revised residuals (without outliers)
- (c) correction function based on the 6 parameters
- (d) corrected residuals

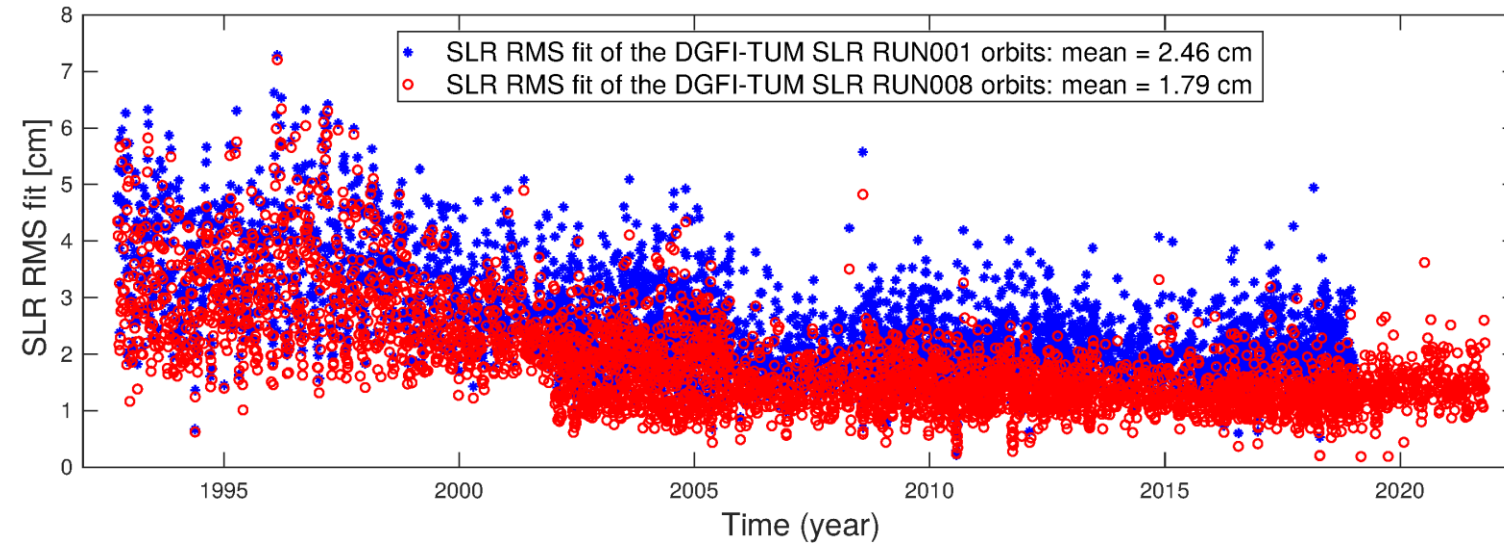


# Station-dependent SLR measurement correction model for TOPEX (3)

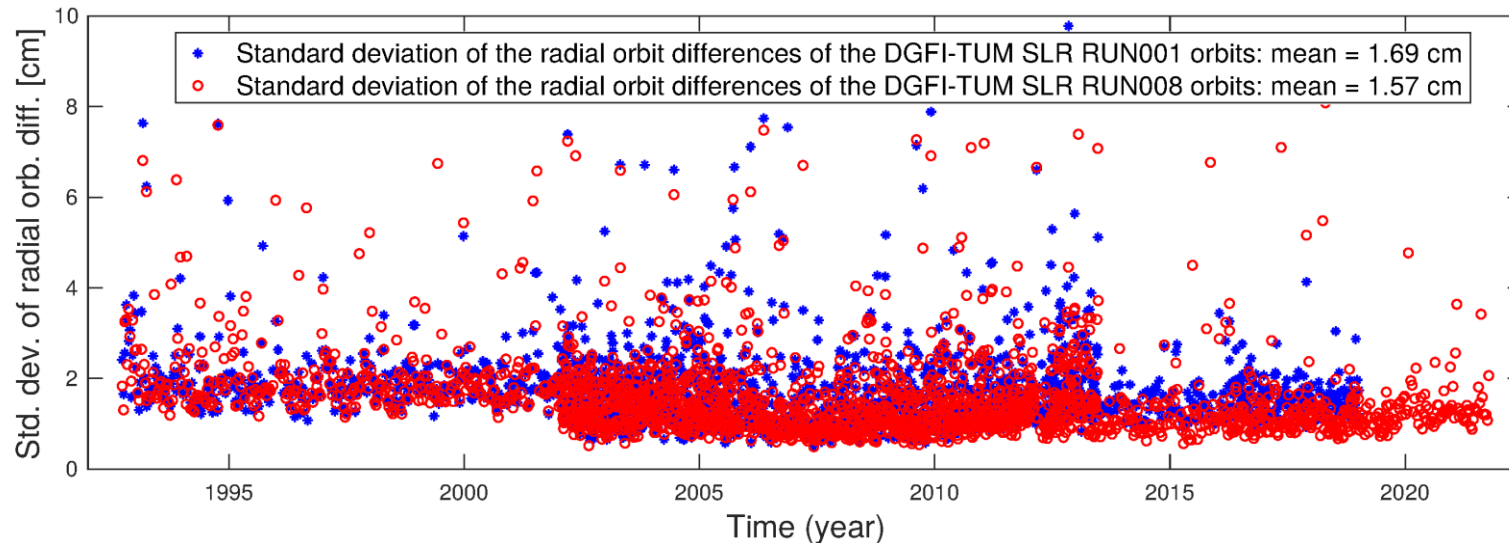
- The uncorrected orbit of T/P has a mean mission RMS of 33.77 cm
- Applying the measurement correction for SLR observations to T/P improves the RMS to 1.97 cm
- Orbit comparisons to external solutions (SLR-only and SLR+DORIS) show good agreement between the solutions. The mean of orbit differences differ only up to 0.2 cm in the radial, transverse, and normal directions.
- A paper is submitted to the journal Advances in Space Research.



# Some results on SLR data-based orbits derived at DGFI-TUM



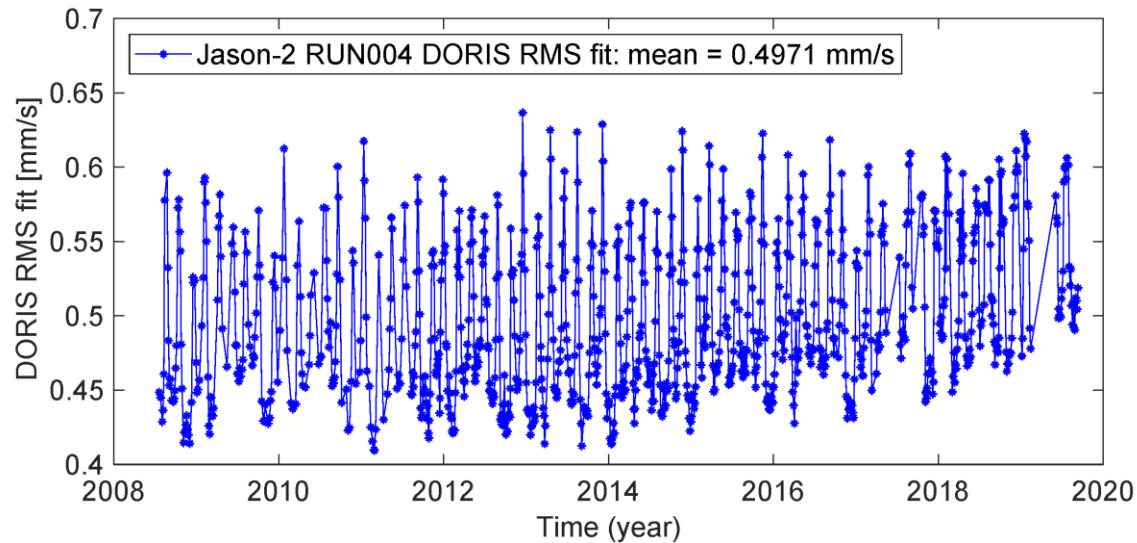
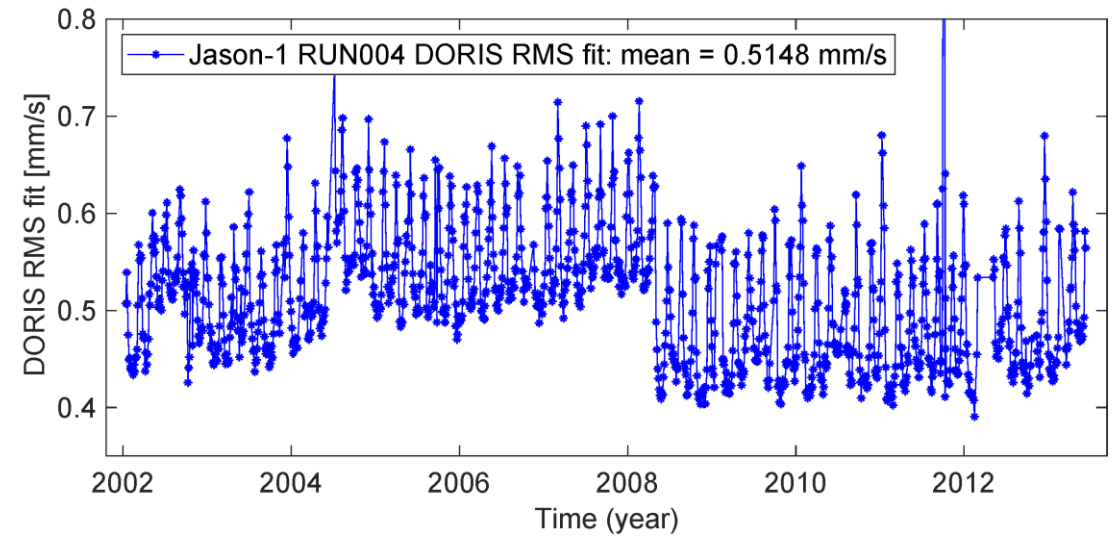
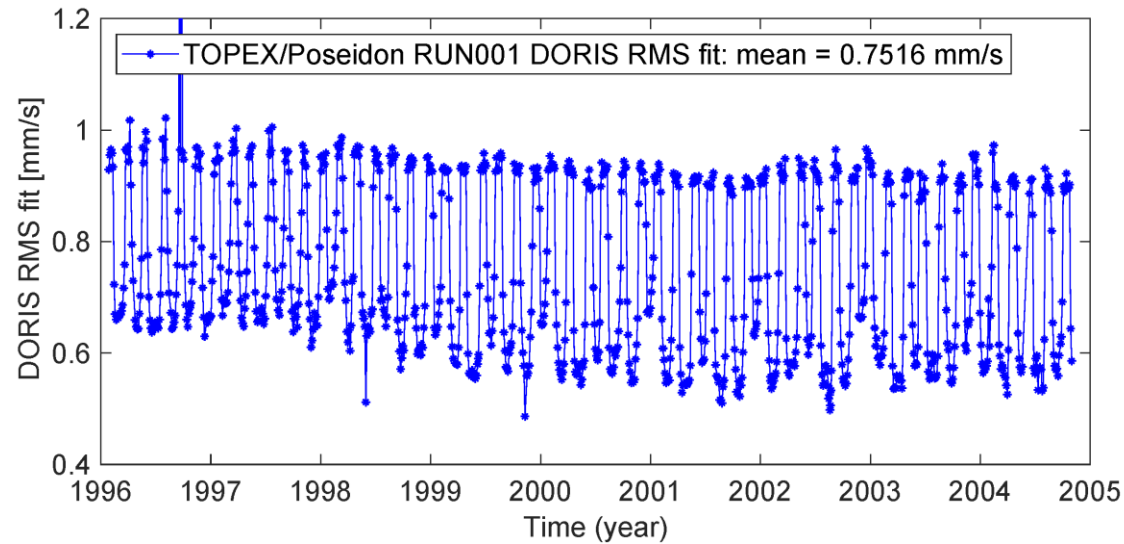
RMS differences of SLR observations of TOPEX/Poseidon, Jason-1, Jason-2, and Jason-3 of DGFI-TUM SLR RUN001 and RUN008 orbits.



Standard deviation of the orbit differences in the radial direction of DGFI-TUM SLR RUN001 and RUN008 orbits with respect to GFZ VER13 orbits of TOPEX/Poseidon and Jason-1 and CNES POE-F orbits of Jason-2 and Jason-3.



# RMS fits of DORIS measurements of DGFI-TUM DORIS data-based orbits



The mean values of the RMS fits of DORIS measurements are:  
0.75 mm/s for TOPEX/Poseidon,  
0.50-0.51 mm/s for Jason-1 and Jason-2.



# A new tool to compute and analyze satellite orbit differences

**Formats** of orbit files to be used: SP1, SP3c, SP3d.

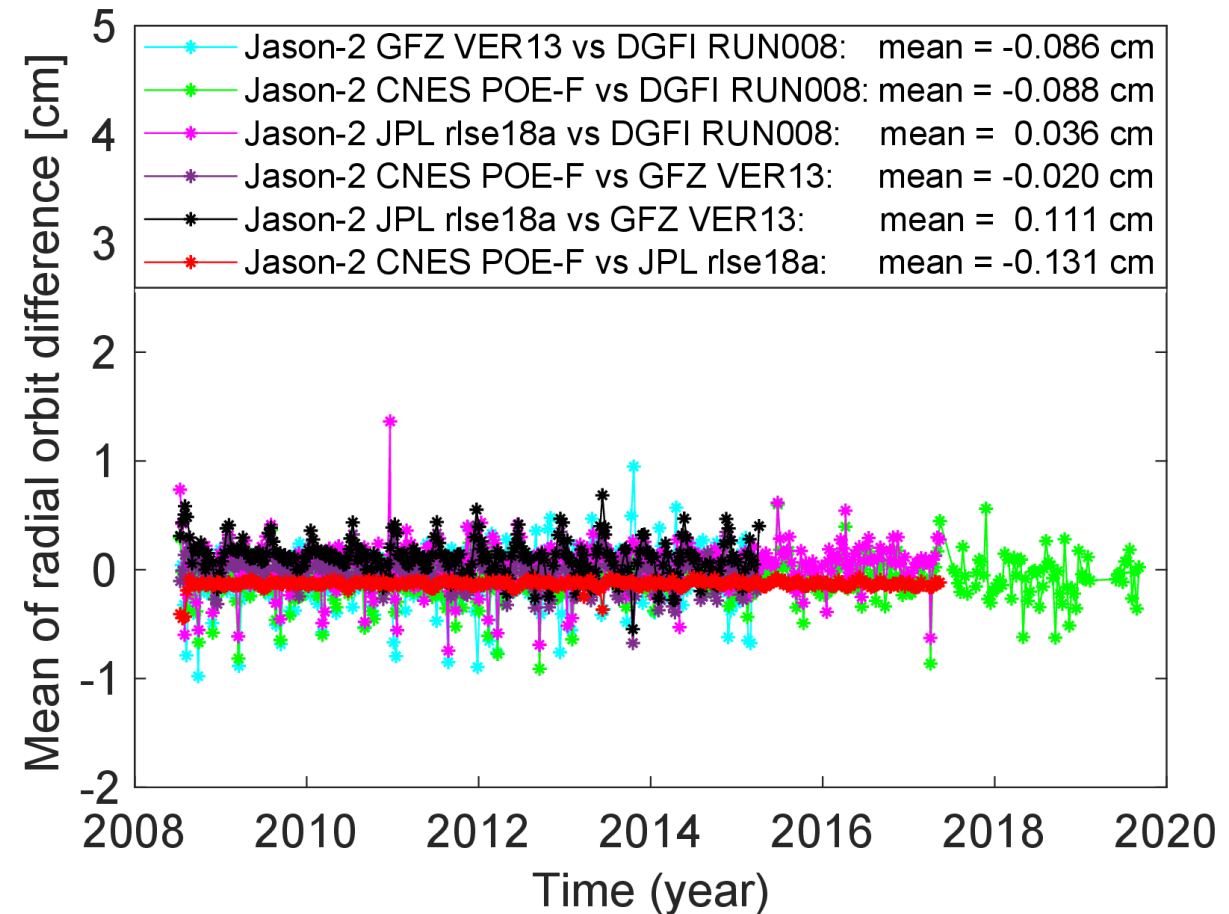
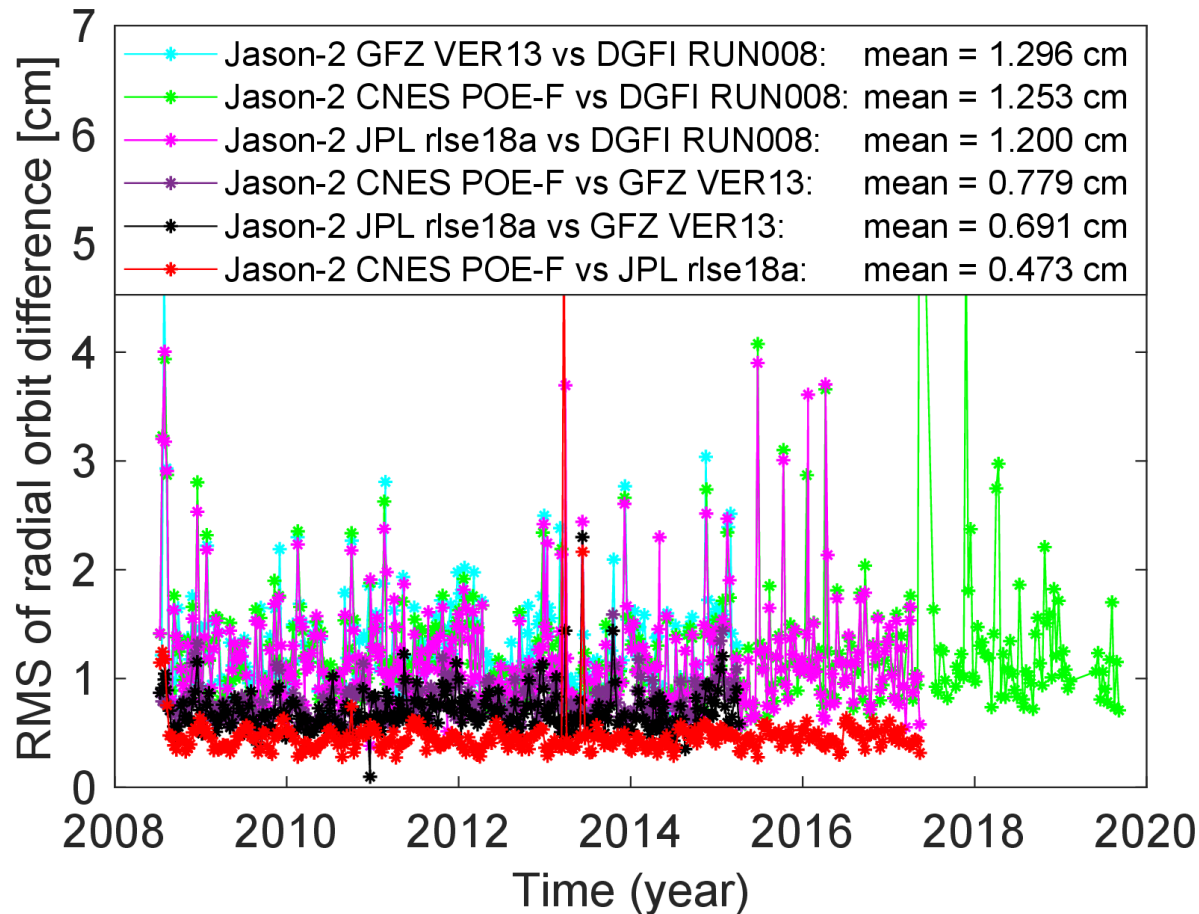
Orbit solutions may have **different time steps**.

**Spline interpolation** method is used to interpolate satellite positions.

Various **possibilities** are realized:

- Computation of orbit differences over the orbit file length of the reference solution or over a long **time span**.
- A possibility to **exclude intervals with orbit maneuvers** from the orbit comparison and to define the duration of the time spans to be cut before and after orbit maneuvers (4 minutes used here).
- A possibility to compute and plot orbit differences **in various coordinate systems**: Cartesian (X,Y, Z), RTN (radial, transverse, normal) and ellipsoidal (height, longitude, and latitude).
- A possibility **to mark orbit maneuvers, start and end** of orbit files in the plots of orbit differences.
- A possibility to perform **frequency analysis** of the orbit differences (under development).

# Radial orbit differences of Jason-2 various orbit solutions



All orbits agree within 5-13 mm in RMS and  $\pm 1.3$  mm in mean. CNES POE-F, JPL and GFZ VER13 orbits agree within 5-8 mm in RMS. SLR data-only DGFI RUN008 orbit agrees within 12-13 mm in RMS with DORIS or GPS data derived orbits from CNES, GFZ and JPL.

# Conclusions

- DOGS-OC has been **further elaborated** for precise orbit determination of altimetry satellites.
- SLR data-based orbits of TOPEX/Poseidon, Jason-1, Jason-2, Jason-3 have been derived at DGFI-TUM during the complete duration of each mission (by 24 October 2021 for Jason-3). The average values of **RMS fits of SLR observations** for these orbits are 1.97 cm for TOPEX/Poseidon, 1.37 cm for Jason-1, 1.35 cm for Jason-2, and 1.38 cm for Jason-3.
- The average values of the RMS of the **radial orbit differences** between DGFI SLR-data orbits and GFZ VER13 orbits are 2.01 cm for TOPEX/Poseidon, 1.76 cm for Jason-1 and 1.30 cm for Jason-2. The average absolute value of the mean radial orbit differences between these orbits is below 0.1 cm.
- DORIS data-based orbits of TOPEX/Poseidon, Jason-1 and Jason-2 have been derived at DGFI-TUM for the duration of each mission. The mean values of the **RMS fits of DORIS observations** are: 0.75 mm/s for TOPEX/Poseidon, and 0.50-0.51 mm/s for Jason-1 and Jason-2.
- **A new tool for the computation and visualization of orbit differences** has been developed at DGFI-TUM and can be applied for the analysis of various orbit solutions.

## References

- Bloßfeld M., Zeitlhöfler J., Rudenko S., Dettmering D. (2020) Observation-based attitude realization for accurate Jason satellite orbits and its impact on geodetic and altimetry results. *Remote Sensing*, 12(4), 682, doi: 10.3390/rs12040682, 2020.
- Emmert J.T., Drob D. P., Picone J. M. et al. (2021) NRLMSIS 2.0: A whole-atmosphere empirical model of temperature and neutral species densities, *Earth and Space Science*, 8(3), doi: 10.1029/2020EA001321.
- Lemoine, J.-M., Biancale, R., Reinquin, F., Bourgogne, S., & Gégout, P. (2019) CNES/GRGS RL04 Earth gravity field models, from GRACE and SLR data. GFZ Data Services. doi: 10.5880/ICGEM.2019.010.
- Matzka J., Stolle C., Yamazaki Y., Bronkalla O., Morschhauser, A. (2021) The Geomagnetic Kp Index and derived indices of geomagnetic activity. *Space Weather*, 19(5), doi: 2020SW002641.
- Zeitlhöfler J., Bloßfeld M., Rudenko S., Dettmering D., Seitz F. Station-dependent satellite laser ranging measurement corrections for TOPEX/Poseidon. *Advances in Space Research* (submitted, in review).