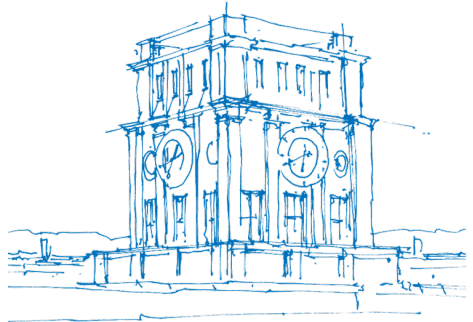


Coupled elastic-acoustic simulations

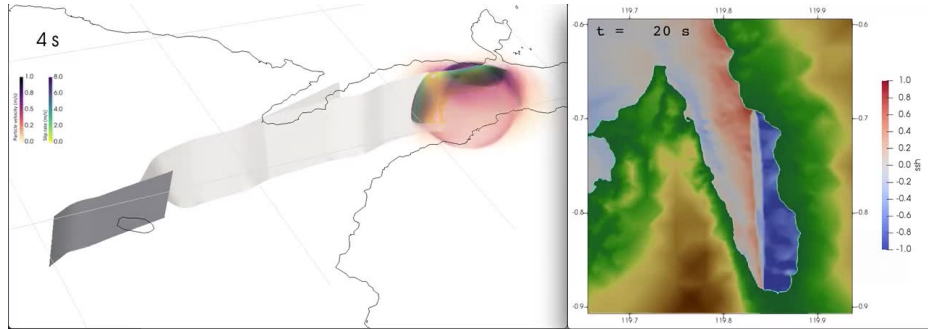
Lukas Krenz, Sebastian Wolf, Michael Bader
Technical University of Munich

2022-05-20



TUM Uhrenturm

Earthquake-Tsunami Coupling

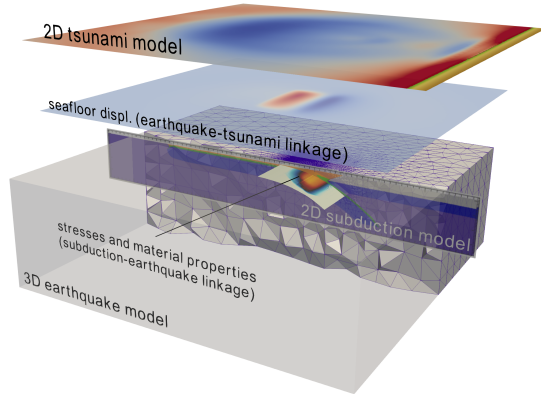


Palu earthquake/tsunami¹, left: earthquake, right: tsunami

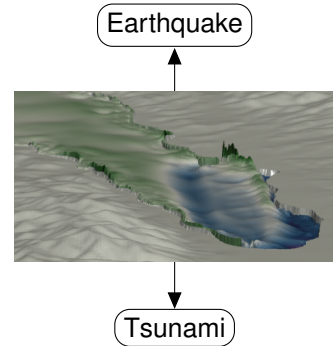
¹T. Ulrich et al. "Coupled, Physics-based Modelling Reveals Earthquake Displacements are Critical to the 2018 Palu, Sulawesi Tsunami". In: *Pure and Applied Geophysics* (2019).

Earthquake-Tsunami Coupling Workflows

One-way Linking²



Fully Coupled



²E. H. Madden et al. "Linked 3-D modelling of megathrust earthquake-tsunami events: from subduction to tsunami run up". In: *Geophysical Journal International* 224.1 (2021)

One-way linking vs 3D coupling

Using shallow water equations for tsunami has disadvantages:

- No dispersion (if not using Boussinesq approximation)
- No acoustic waves (i.e. assuming incompressible ocean)
- Only works in shallow water limit

Fully-coupled elastic-acoustic model solves **entirely new class** of earthquake-tsunami problem

Compares well with one-way linking in sufficiently shallow water

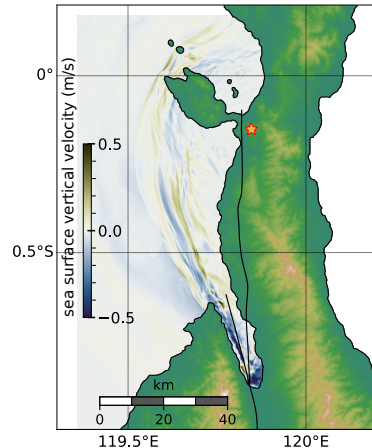
Seismic and acoustic waves can be dominant in data recorded by offshore instruments.

Detailed model comparison work in progress³

³L. S. Abrahams et al. "Comparison of techniques for coupled earthquake and tsunami modeling". In: *AGU Fall Meeting Abstracts (2020)*.

Example: Palu, Sulawesi September 2018

- M_w 7.5 strike-slip earthquake
- Propagation at supershear speed crossing narrow Palu Bay
- Followed by unexpected and localized tsunami
- Complicated geometry: bath-tub like bay, very shallow water (average 600 m)
- Details: [L. Krenz et al.](#) “3D Acoustic-Elastic Coupling with Gravity: The Dynamics of the 2018 Palu, Sulawesi Earthquake and Tsunami”. In: *Proceedings of the International Conference for High Performance Computing, Networking, Storage and Analysis*. St. Louis Missouri, Nov. 2021.



Modeling Goals & Resulting Challenges

Goals

- Capture entire process: earthquake rupture, generation and propagation of seismic waves, ocean acoustic waves and tsunamis
- High resolution in 3D Earth (10 Hz) and ocean (15 Hz)
- Complex geometry, including bathymetry/topography
- **3D** solid-fluid coupling

Challenges

- Resolution leads to large setups: \approx 250 billion degrees of freedom
- Vastly different element sizes \implies vastly different time step size
- Geometry requires unstructured meshes

SeisSol

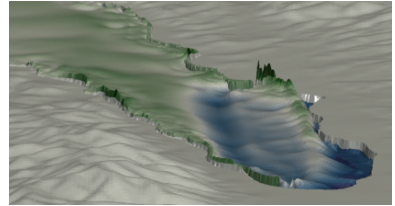
What

- (An)**Isotropic elastic** seismic wave propagation
- **Acoustic** wave propagation
- Viscoelastic wave propagation
- Poroelasticity
- **Off-fault plasticity**
- **Dynamic earthquake rupture**

How

- Numerics: ADER-DG
- Unstructured tetrahedral meshes with local time-stepping
- Optimized Hybrid MPI + OpenMP Parallelization

Available (**open-source**) at <https://github.com/SeisSol/SeisSol/>.



The ADER-DG Approach⁴

Solve linear hyperbolic equations of the form

$$\frac{\partial \mathbf{q}}{\partial t} + \mathbf{A} \frac{\partial \mathbf{q}}{\partial x} + \mathbf{B} \frac{\partial \mathbf{q}}{\partial y} + \mathbf{C} \frac{\partial \mathbf{q}}{\partial z} = 0 \quad (1)$$

with \mathbf{q} vector of variables, $\mathbf{x} = (x, y, z)$ position, t time, $\mathbf{A}(\mathbf{x})$, $\mathbf{B}(\mathbf{x})$, $\mathbf{C}(\mathbf{x})$ flux matrices.

Discontinuous Galerkin (DG) divides domain into disjoint elements, approximates solutions by **piecewise-polynomials**.

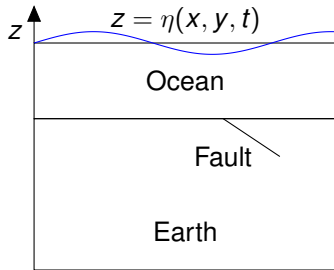
Elements are connected by solving the **Riemann** problem **exactly**.

ADER-Approach uses **element-local Taylor expansion** for time integration instead of Runge-Kutta procedures.

Advantages: **One-step scheme, arbitrary order in time and space**

⁴V. A. Titarev and E. F. Toro. "ADER: Arbitrary High Order Godunov Approach". In: *Journal of Scientific Computing* 17.1 (Dec. 2002).

Two-Way Elastic-Acoustic Coupling



Based on 2D model of Lotto and Dunham⁵
 Here: **First 3D implementation!**

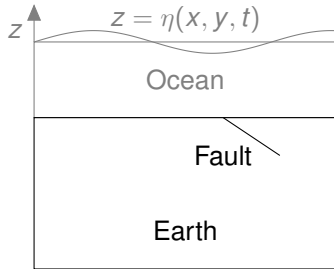
With:

- $\eta(x, y, t)$ sea surface height
- Ocean at rest at $z = 0$

Figures in 2D for illustration, all simulations are **3D**

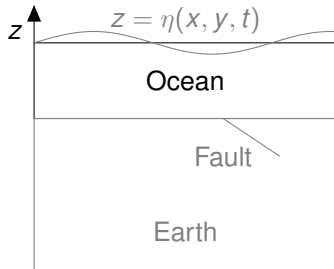
⁵G. C. Lotto and E. M. Dunham. "High-order finite difference modeling of tsunami generation in a compressible ocean from offshore earthquakes". In: *Computational Geosciences* 19.2 (2015)

Earth Model



- Isotropic elastic medium
- Velocity-stress formulation
- $\mathbf{q} = (u, v, w, \sigma)$
- u, v, w velocities
- σ stress tensor
- ρ density, (μ, λ) Lamé parameters
- Dynamic rupture earthquake source (here: fast velocity weakening rate-and-state friction)

Ocean Model⁶



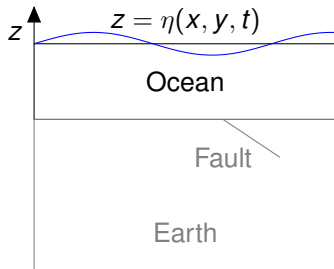
Modeled as **linear acoustic** medium, $\mathbf{q} = (u, v, w, p)$
 Treated as special case of elastic wave equation with $\mu = 0$
 and $\sigma_{ij} = -p\delta_{ij}$.
 Pressure p sum of background pressure p_0 (in **hydrostatic equilibrium**) and perturbation p' .

$$\begin{aligned} p &= p_0 + p'(x, y, z) \\ p_0 &= p_a + \rho g(-z) \end{aligned} \quad (2)$$

with atmospheric pressure p_a and $g = 9.81 \text{ m/s}^2$.

⁶G. C. Lotto and E. M. Dunham. "High-order finite difference modeling of tsunami generation in a compressible ocean from offshore earthquakes". In: *Computational Geosciences* 19.2 (2015).

Ocean Model: Free Surface



Physical free surface boundary condition at sea surface height η :

$$p(x, y, \eta) = 0 \quad (3)$$

Typically solved by moving mesh.

Expensive, instead use **linearization** and **hydrostatic background pressure**:

$$p(x, y, z = 0) = \rho g \eta(x, y) \quad (4)$$

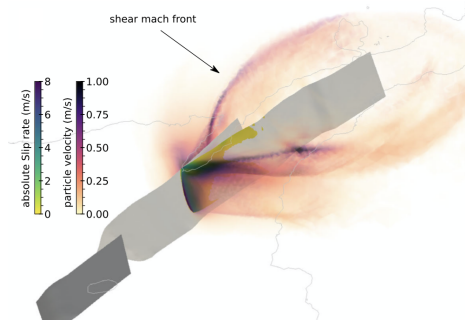
$$\frac{\partial \eta}{\partial t} = w$$

Important to use w at boundary (solution of Riemann problem), otherwise unstable!

Solve equation (4) with ODE solver

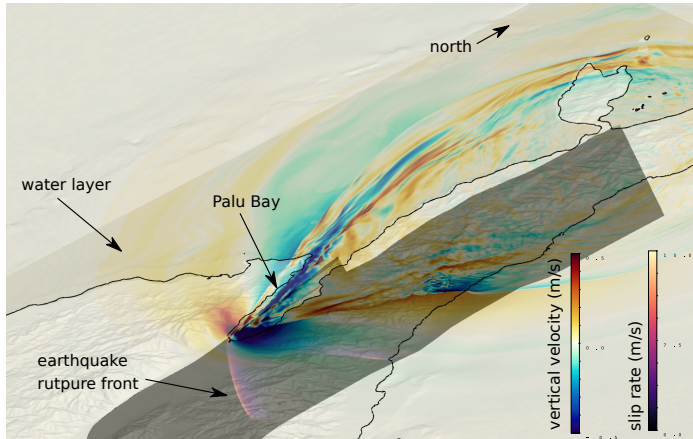
Palu: Our setup

- Added water layer to existing earthquake model⁷.
- Fully coupled model (including plasticity, dynamic earthquake rupture)
- Two meshes: **M** (89 million elements), **L** (518 million elements)
- Poly. Order 5, 46 and 261 billion degrees of freedom
- **M** took 5.3 hours on 1000 nodes of SuperMUC-NG for 100s simulated time
- **L** took 5.5 hours on 3072 nodes of SuperMUC-NG for 30s simulated time



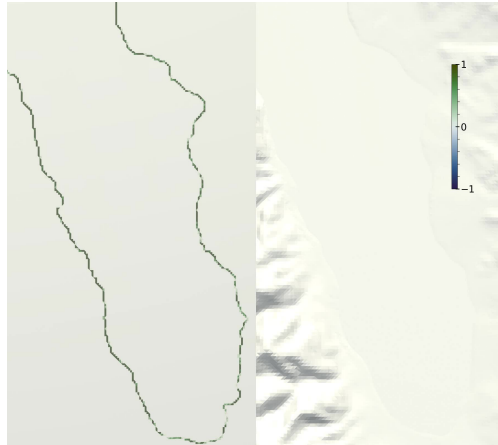
⁷T. Ulrich et al. "Coupled, Physics-based Modelling Reveals Earthquake Displacements are Critical to the 2018 Palu, Sulawesi Tsunami". In: *Pure and Applied Geophysics* (2019)

Palu: 3D View at 15s



Slip rate (on faults), vertical sea-surface/Earth velocity at 15 s

Comparison with One-Way Linking



Left: One-way linking, **Right: fully-coupled**

Otaniemi EGS-Induced Earthquake

- Otaniemi project
- Enhanced geothermal system (EGS), stimulated in June and July 2018 in the region of Helsinki
- Thousands of induced earthquakes
- No event exceeded threshold magnitude
- However: Observations of ground shaking and audible disturbances collected by Macroseismic questionnaire of the Institute of Seismology, University of Helsinki⁸

Goal: create “discomfort maps”

See also: talk at next week’s EGU (Monday):

[L. Krenz et al.](#) “The variability of seismo-acoustic nuisance patterns: a case study from the Helsinki geothermal stimulation”. In: *EGU General Assembly (2022)*

⁸G. Hillers et al. “The 2018 Geothermal Reservoir Stimulation in Espoo/Helsinki, Southern Finland: Seismic Network Anatomy and Data Features”. In: *Seismological Research Letters* 91.2A (Feb. 2020).

Fully-coupled model

- Kinematic point source
- Geometry with realistic topography but ignore shallow Helsinki bay Laajalahti
- Earth modeled by elastic wave equation, air by acoustic wave equation
- Analytical methods not sufficient, need numerical approach
- Compute loudness as

$$20 \log_{10} \left(\frac{p^{\text{peak}}}{p^{\text{ref}}} \right) \text{ dB}$$

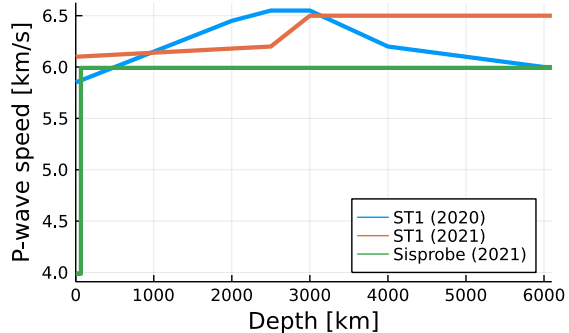
with measured peak pressure p^{peak} and reference pressure p^{ref}

- Humans perceive sounds with different loudness, depending on frequency
- Use weighting factors (via digital filtering) to get loudness from volume
- We need to resolve at least 20Hz, better up to 50Hz.

Velocity Models

Currently comparing three models

- ST1 (2019)⁹
- ST1 (2021),¹⁰
- Sisprobe, full inversion (currently simplified 1D version)¹¹

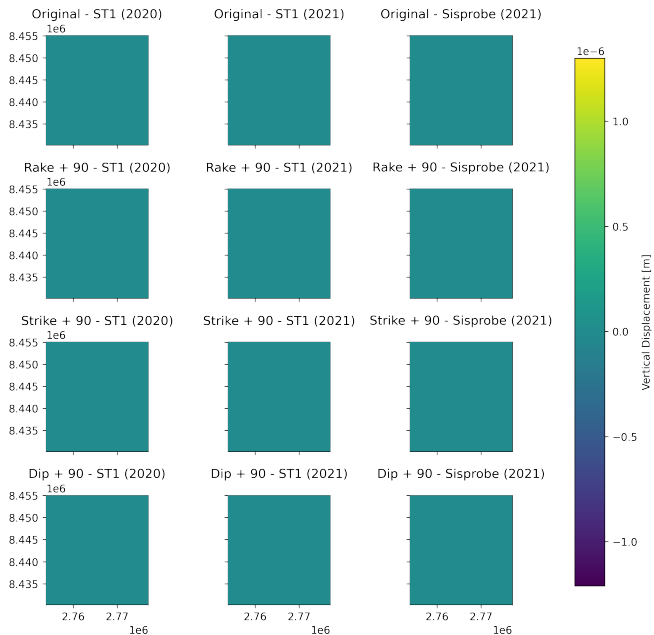


²G. Kwiatek et al. "Controlling fluid-induced seismicity during a 6.1-km-deep geothermal stimulation in Finland". In: *Science Advances* 5.5 (2019)

³M. Leonhardt et al. "Seismicity during and after stimulation of a 6.1 km deep enhanced geothermal system in Helsinki, Finland". In: *Solid Earth* 12.3 (Mar. 2021)

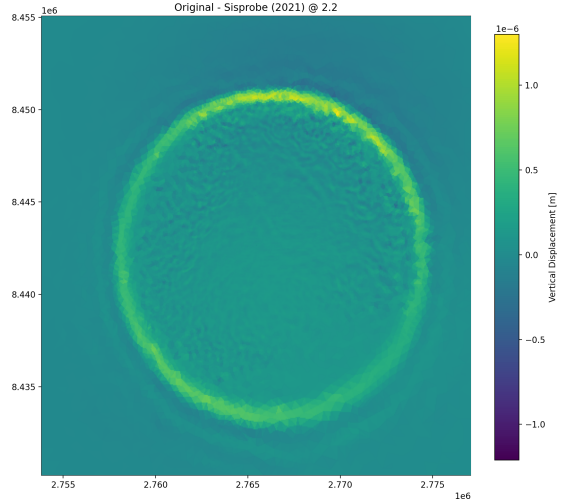
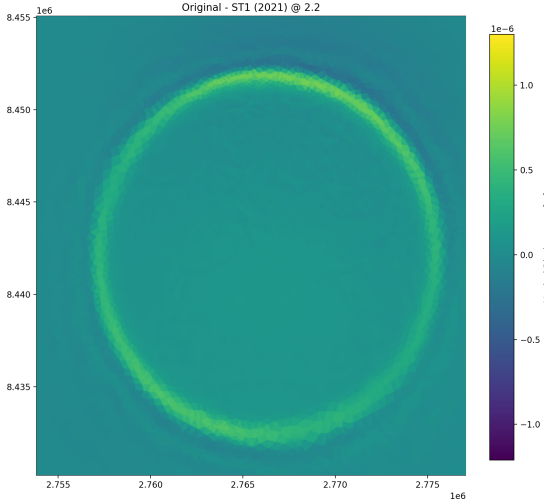
⁴Roméo Courbis, Sisprobe

Time = 0.0 s

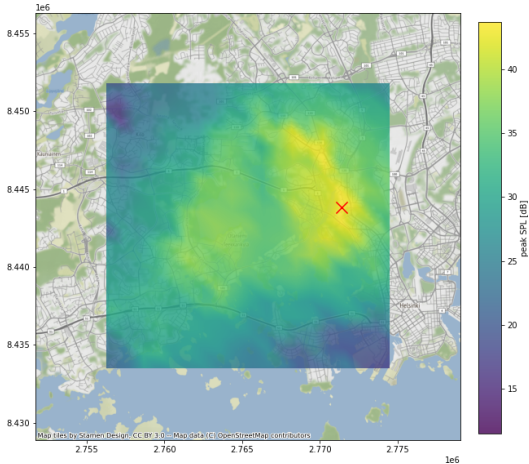


- Case study:
- Source mechanisms
- Velocity models
- “what if?”

Velocity Model Comparison



Discomfort Map



- Result: Map that shows areas with large sound pressure
- Sound recorded at 0.5 m height
- Note: Without frequency weighting

Conclusion

- Fully coupled elastic-acoustic simulations capture more effects than typical one-way linking strategies
- Linearization of free surface boundary conditions efficient way of tracking sea surface height
- Pronounced differences in Palu scenario: “smoother” tsunami
- It can also be used for generation of “discomfort maps”, as Otaniemi example showed

This project has received funding from the European Union’s Horizon 2020 Research and Innovation Programme under grant agreement No. 823844 (ChEESE – Centre of Excellence in Solid Earth).

Compute resources were provided by the Gauss Centre for Supercomputing e.V.

(www.gauss-centre.eu) on SuperMUC-NG at the Leibniz Supercomputing Centre (www.lrz.de, project pn68fi), by the CSC – IT Center for Science, Finland (project 2003841, on Mahti) and by the Supercomputing Laboratory at King Abdullah University of Science & Technology (KAUST, project k1488, on Shaheen-II) in Thuwal, Saudi Arabia.

