



TUM

TECHNISCHE
UNIVERSITÄT
MÜNCHEN

Facts & Figures



Contents

- Portrait
- History
- Students & Staff
- Faculties
- TUM Locations and
Science Network
- International Scope
- Budget
- Research and the Promotion
of Young Talent
- Organizational Structure
- Contact & Masthead



Portrait



The Technische Universität München holds a foremost position in Germany due to its research and teaching work and its successful reforms. It focuses on the natural, engineering and life sciences and medicine in competition with universities all over the world.

- INTERNATIONAL TOP-LEVEL RESEARCH
- SCIENTIFIC EXCHANGE AND COSMOPOLITAN SCOPE
- OUTSTANDING EDUCATION
- CLOSE PRACTICAL ORIENTATION
- SCIENCE AND TECHNOLOGY WITH A HUMAN FOCUS
- MODERN MANAGEMENT METHODS
- DIALOG WITH THE PUBLIC

History

1868

Foundation of the Polytechnische Hochschule München by Ludwig II. Carl von Linde is one of the first professors.

1877

Renamed Technische Hochschule München

1901

Granted right to confer doctoral degrees

1905

Admittance of female students

1930

- Integration of the College for Agriculture and Brewing in Weihenstephan
- Nobel Prize in Chemistry for Hans Fischer

1957

Construction of a research reactor

in Garching and later relocation of the physics and chemistry faculties to the Garching research campus

1961

Nobel Prize for Physics for Rudolf Mößbauer

1967

Establishment of the Faculty of Medicine

1970

- Renamed Technische Universität München (TUM)
- Presidential constitution

1973

Nobel Prize in Chemistry for Ernst Otto Fischer

1988

Nobel Prize in Chemistry for Robert Huber

1996

Construction of the Heinz Maier-Leibnitz Research Neutron Source in Garching

1997

Relocation of the Faculty of Mechanical Engineering to Garching

1998

- New TUM constitution
- Foundation of TUM-Tech GmbH

2000

- Foundation of the Weihenstephan Center of Life Sciences (a faculty)
- Foundation of Central Institute of Medical Engineering (ZIMT)

2002

- Foundation of the Faculty of Sport Science
- Foundation of the Faculty of Business Administration

- Relocation of the Faculties of Mathematics and Informatics to Garching
- Foundation of the German Institute of Science and Technology (GIST) in Singapore

2003

- Foundation of the Central Institute for Nutrition and Food Research (ZIEL)
- Foundation of the Central Institute for Teacher Training and Further Training (ZLL)

2004

Opening of the Heinz Maier-Leibnitz Research Neutron Source

2006

Subway U6 "University line," connects Campus Garching and Greater Munich area



Students & Staff

(2004/2005 academic year)

STUDENTS: 20,500

Female percentage: 31%

FRESHMEN: 5,400

GRADUATES (2004/05): 3,000

STUDENTS FROM
ABROAD: 4,000

NUMBER OF COURSES
(incl. courses at the GIST): 127

TEACHER TRAINING
COURSES: 34

TUM Staff

*(not including university
hospital staff)*

PROFESSORS: 346

incl. 23 female professors
37 other countries

ACADEMIC STAFF: 3,100

Female percentage: 24%
16% other countries

NON-ACADEMIC STAFF: 2,800

Female percentage: 53%



Rechts der Isar University Hospital

PROFESSORS:
incl. 7 female professors
4 other countries

53

ACADEMIC STAFF:
thereof 42% Female
9% other countries

900



FACULTIES

MUNICH

- Architecture (AR)
- Business Administration (WI)
- Civil Engineering and Surveying (BV)
- Electrical Engineering and Information Technology (EI)
- Medicine (ME)
- Sport Science (SP)

GARCHING

- Mathematics (MA)
- Physics (PH)
- Chemistry (CH)
- Mechanical Engineering (MW)
- Informatics (IN)

WEIHENSTEPHAN (FREISING)

- Weihenstephan Center of Life Sciences (WZW)





TUM Locations and Science Network in Bavaria

- TUM LOCATIONS
- SCIENCE NETWORK

INTERNATIONAL SCOPE

CASES OF
COOPERATION WITH
FOREIGN UNIVERSITIES: 132

Europe: 48
Asia: 46
USA: 15
South America: 11

Africa: 7
Australia/New Zealand: 5

COURSES LEADING TO AN
INTERNATIONAL DEGREE

Bachelor of Science (BSc.): 23
Master of Science (MSc.): 41



2005 Budget

TOTAL BUDGET

€ 729.4 million

incl. Rechts der Isar University Hospital

■ PLANNED EXPENDITURE € 342.6 million

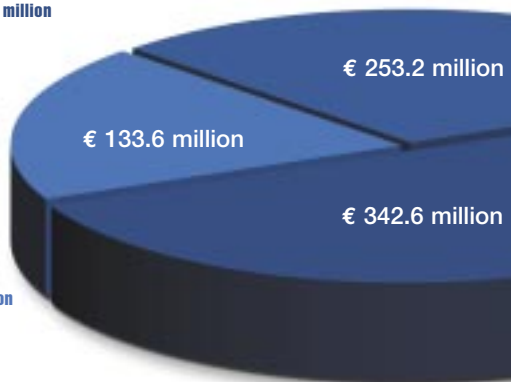
incl. expenditure for the
teaching hospital: € 70.5 million

■ OWN REVENUE € 253.2 million

(from medical services and
materials testing)
incl. university hospital
contribution: € 223.2 million

■ RESEARCH FUNDING € 133.6 million

(from industry, the German
Research Association, the EU,
the German Federal Ministry of
Education and Research, etc.)
incl. university hospital
contribution: € 20.1 million



FUNDRAISING

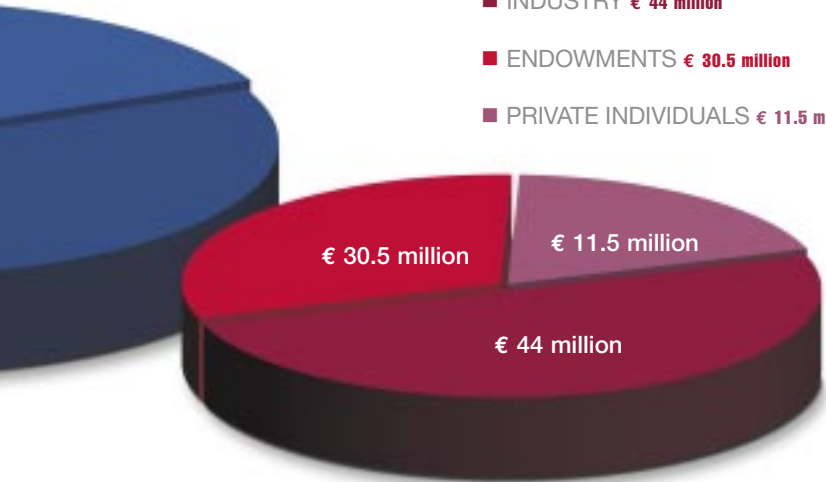
€ 86 million

Endowed funds *(since 1998)*

■ INDUSTRY € 44 million

■ ENDOWMENTS € 30.5 million

■ PRIVATE INDIVIDUALS € 11.5 million



Research and the Promotion of Young Talent

(2004/2005 academic year)

THIRD-PARTY INCOME:

€ 133.6 million (incl. income
earned by the teaching hospital)

5TH AND 6TH EU FRAMEWORK
PROGRAM FOR RESEARCH,
TECHNOLOGICAL DEVELOPMENT
AND DEMONSTRATION ACTIVITIES:

€ 7.2 million in 95 projects
(excluding hospital)

COLLABORATIVE

RESEARCH CENTERS: 23
(coordinated by the TUM): 9

TRANSFER UNITS: 4

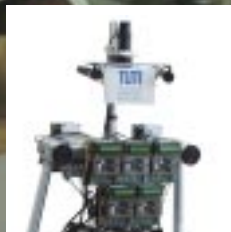
POST-GRADUATE
INSTITUTIONS: 2

DOCTORATES: 670

PROFESSORIAL THESES: 47

PATENTS REGISTERED
BY THE TUM: 75

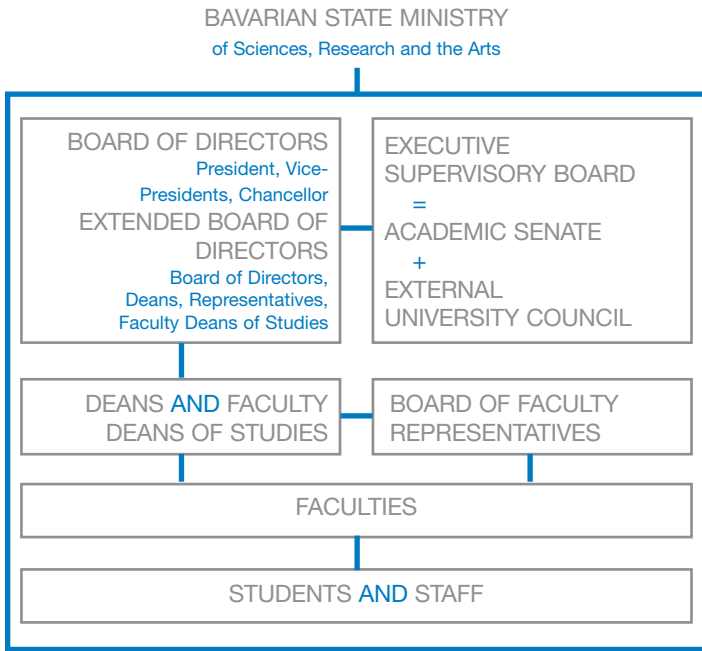
Incl. patents
registered in 2005: 26





wird abgeschnitten

Organizational Structure





Contact details

Technische Universität München

Arcisstraße 21
80333 Munich
Germany

Press & Communication

Tel: +49 (0)89-289-22778
Email: presse@tum.de

Student Service Center

Tel: +49 (0)89-289-22737
Email: studienberatung@tum.de

For further information, see www.tum.de

Masthead

Published by TU München, Press & Communication

Texts by Tina Heun

Photos by TU München, Albert Scharger, Thorsten Nasser

Designed by twentyfourseven-advertising.de