

Rory Scarrott^{5,6}, Stephen Flood⁶, Marcello Passaro¹, Felix L. Müller², Adili Abulaitijiang², Ole B. Andersen², Denise Dettmering¹, Jacob L. Hoyer³, Milla Johansson⁴, Kristine Skovgaard Madsen³, Laura Rautiainen⁴, Ida M. Ringgaard³, Eero Rinne⁴, Jani Särkkä⁴, Christian Schwatke⁴, Julius Oelsmann¹, Florian Seitz¹, Laura Tuomi⁴, Americo Ambrozi⁷, Marco Restano⁷, Jérôme Benveniste⁷

(1) Deutsches Geodätisches Forschungsinstitut, Technische Universität München (DGF-TUM), Germany; (2) SPACE National Space Institute, Technical University of Denmark, (DTU), Denmark; (3) Danish Meteorological Institute (DMI), Denmark; (4) Finnish Meteorological Institute (FMI), Finland; (5) Department of Geography, University College Cork (UCC), Ireland; (6) MaREI Centre, Environmental Research Institute, University College Cork (UCC), Ireland; (7) DEIMOS, c/o ESA-ESRIN, Italy (***) SERCO, c/o ESA-ESRIN, Italy

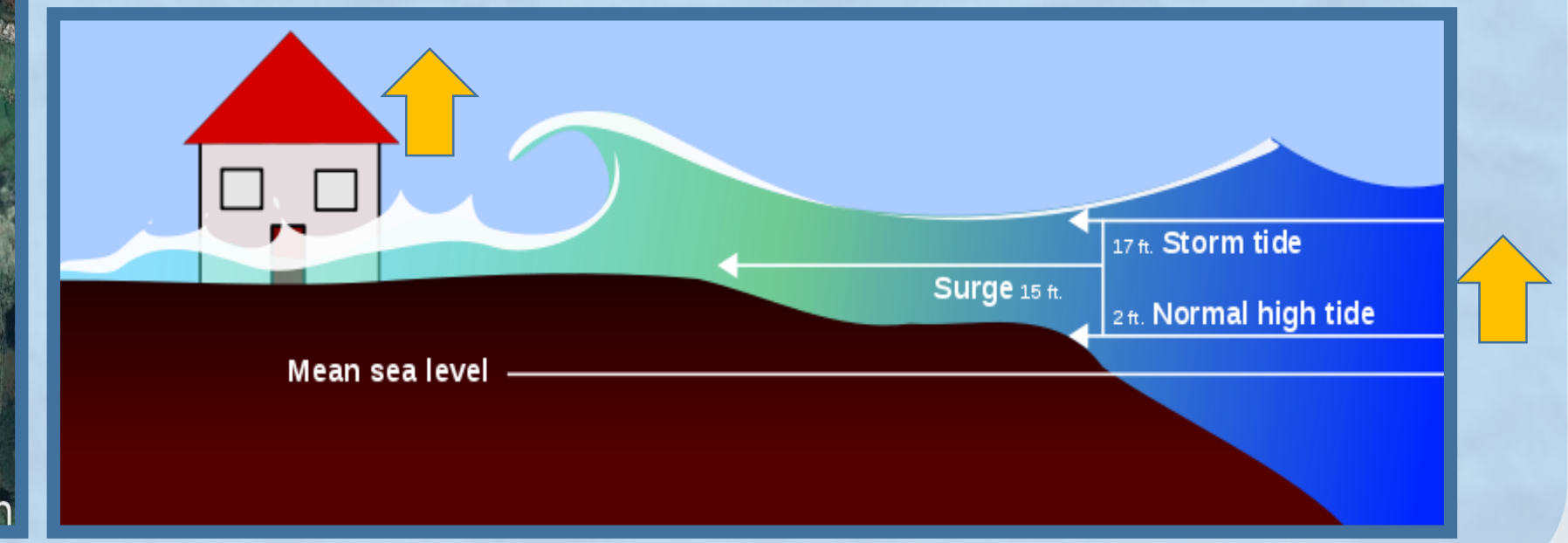
Sea level Rise and Ireland

- Ireland's complex coastline shelters coastal communities, with population centres in Cork Harbour, and Galway Bay.
- Key infrastructure such as roads and ports/docks are built along shorelines in many places.
- Existing defences and currently safe areas are at risk of storm surge and storm waves with increased sea level.
- Understanding regional dynamics of sea-level change is essential to inform adaptation planning and action.



➤ Coastal communities such as Westport rely on complex coastline and other natural and man-made barriers to protect them from Winter Storms.

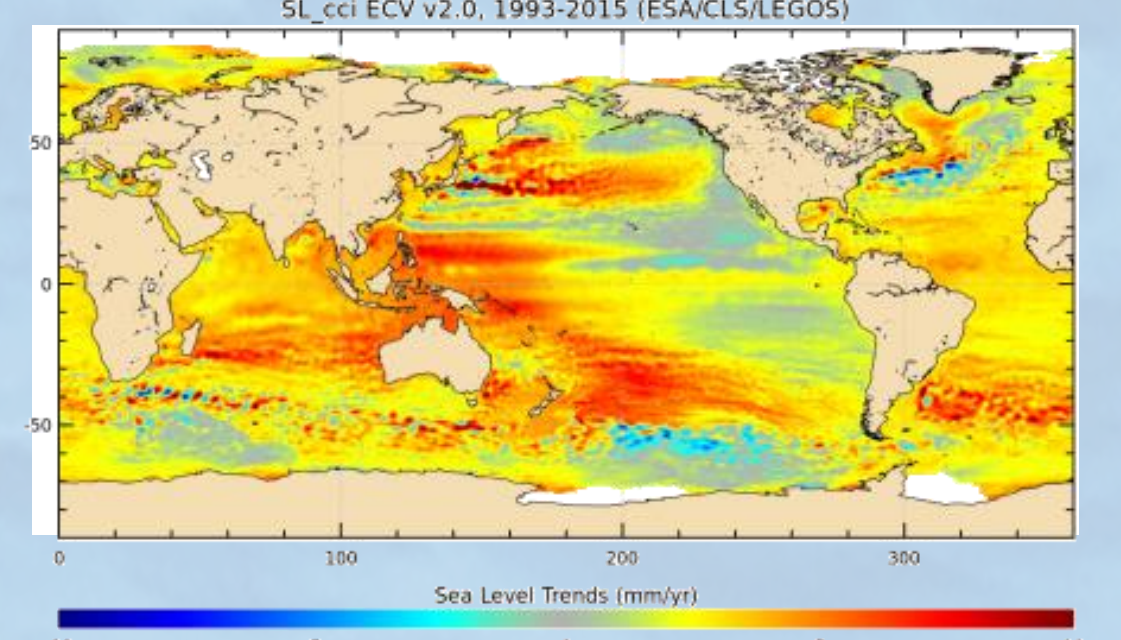
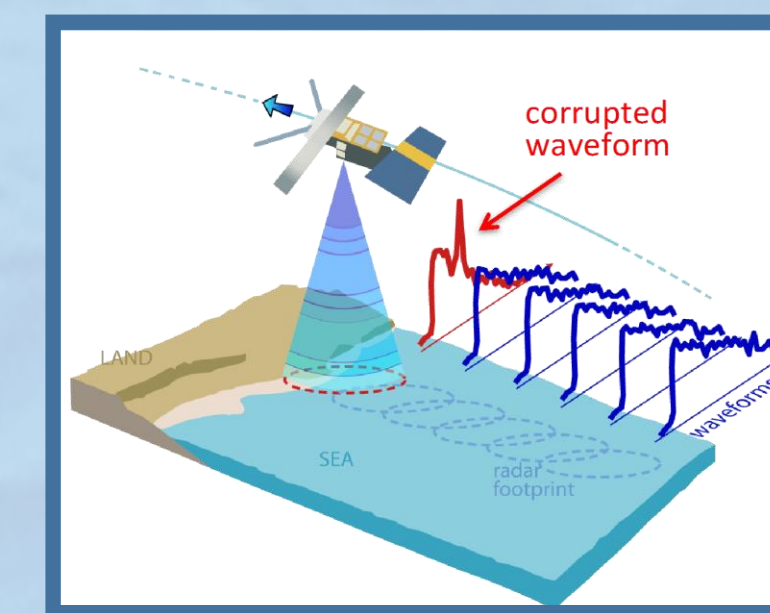
➤ Rising sea levels enable storm tides, and the storm-driven waves on top, to reach higher, potentially overwhelming coastal defences.



Irish stakeholders can now position themselves to harness new coastal sea level products

Global Sea Level Products: ESA-CCI

- Global mean sea level products are available.
- Initiatives are currently examining products to assess changes closer to coasts – e.g. Marti et al. (2019).
- Altimetry measurements need to be re-processed to maximise the information yield closer to the coast.
- Coastal Altimetry studies are constantly improving the possible information yield.



➤ Example of the global ESA CCI product. See www.esa-sealevel-cci.org for more information

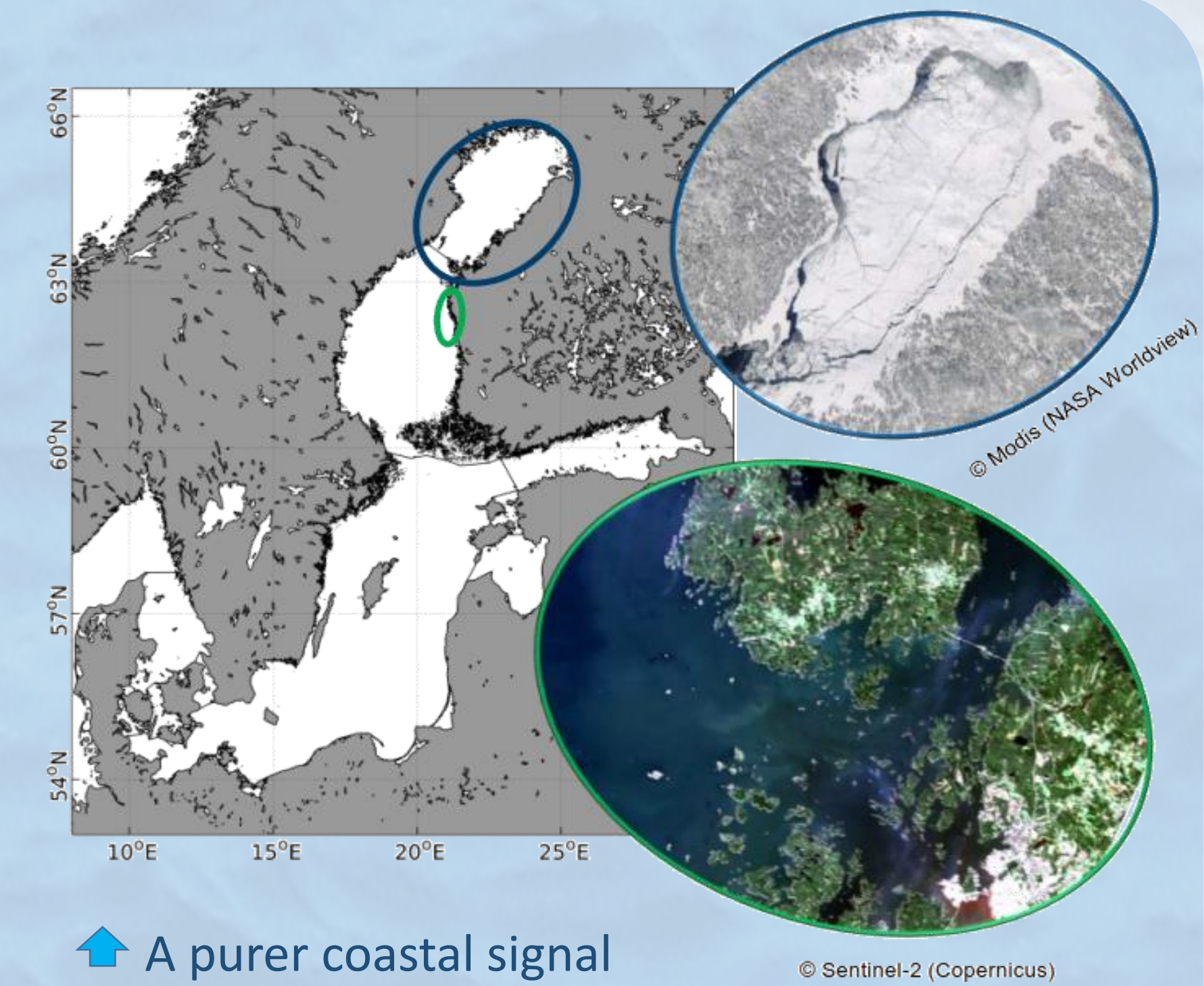
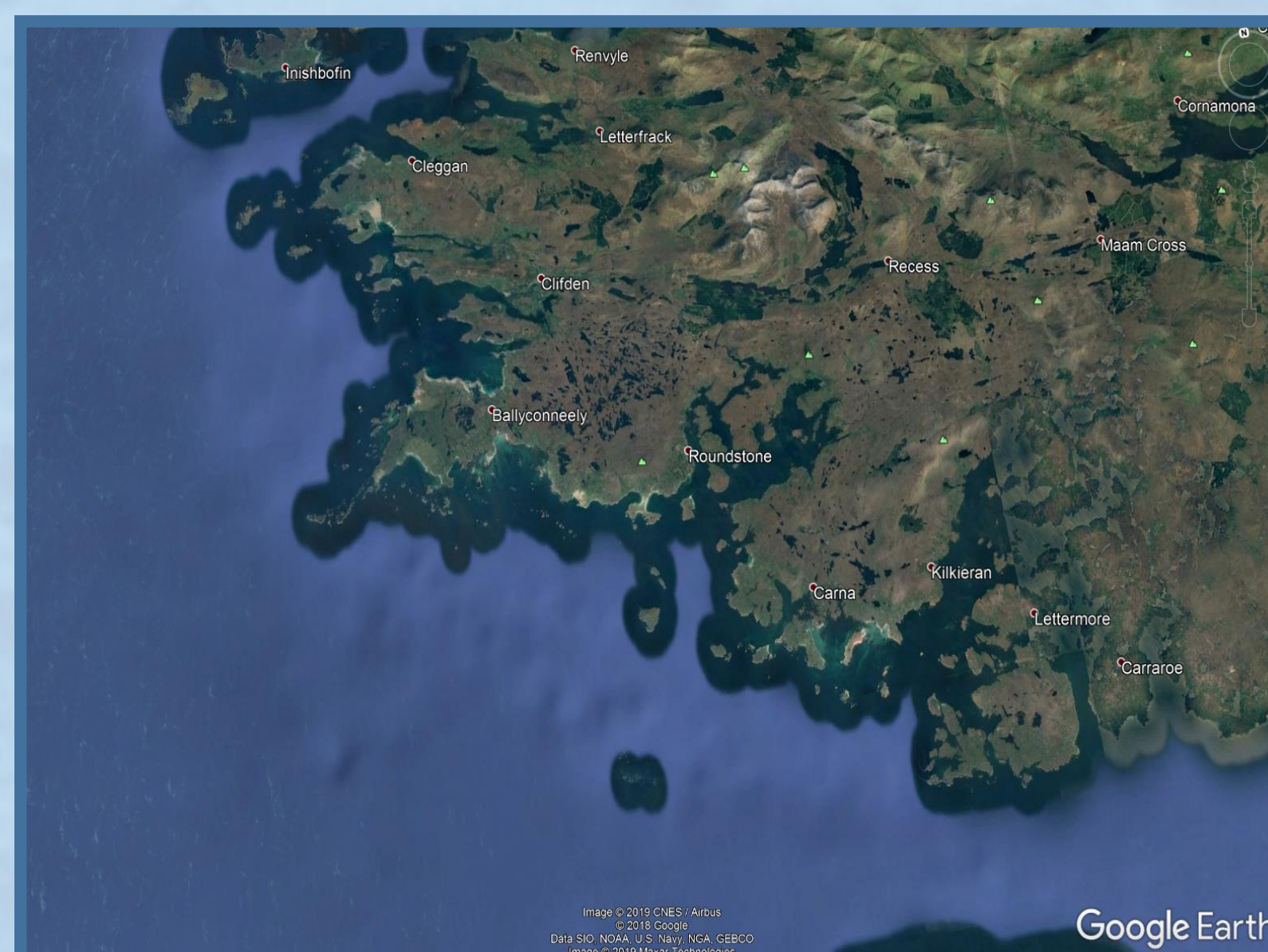
➤ Altimetry measurements are of limited use close to the coast, as flat surfaces corrupt the return signal

Baltic SEAL Project

Using the Baltic Sea (with low tide signal) as a testbed to:

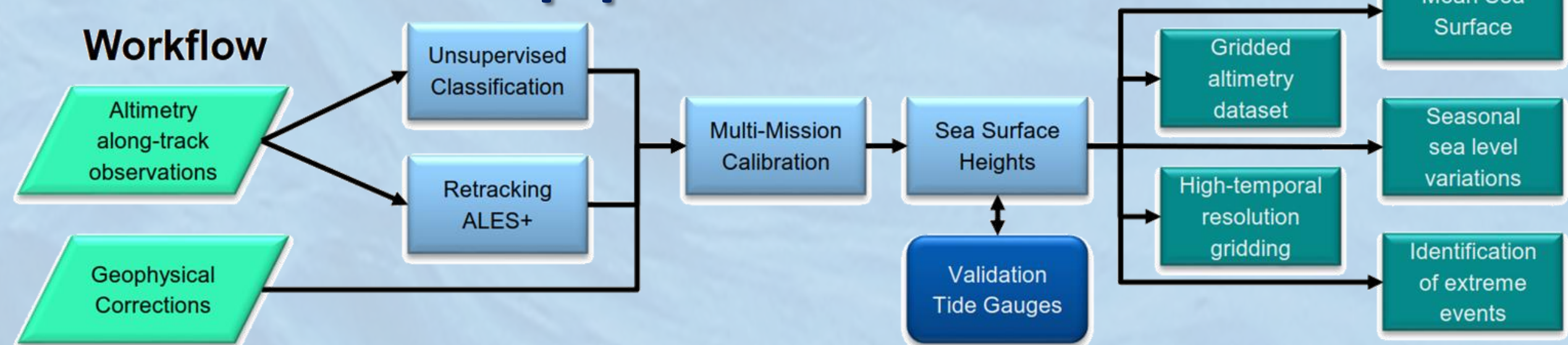
- Exploit high-frequency multi-mission altimetry observations (LRM & SAR);
- Advance data retrieval very close to coasts (~ 3km);
- Improve and update our understanding of mean sea level in the entire Baltic Sea, in the vicinity of jagged coastlines and sea-ice;
- Provide various timeframe datasets, extending as far as 25 years, with monthly triangulated meshes, high-temporal resolution grids, and validated with tide gauge data.

➤ Lessons will be learned from extracting coastal sea level measurements for coastal areas along the (low-tide) Baltic Sea. These can be examined in the context of complex coastlines with a greater tidal influence, such as along Ireland's west coast.

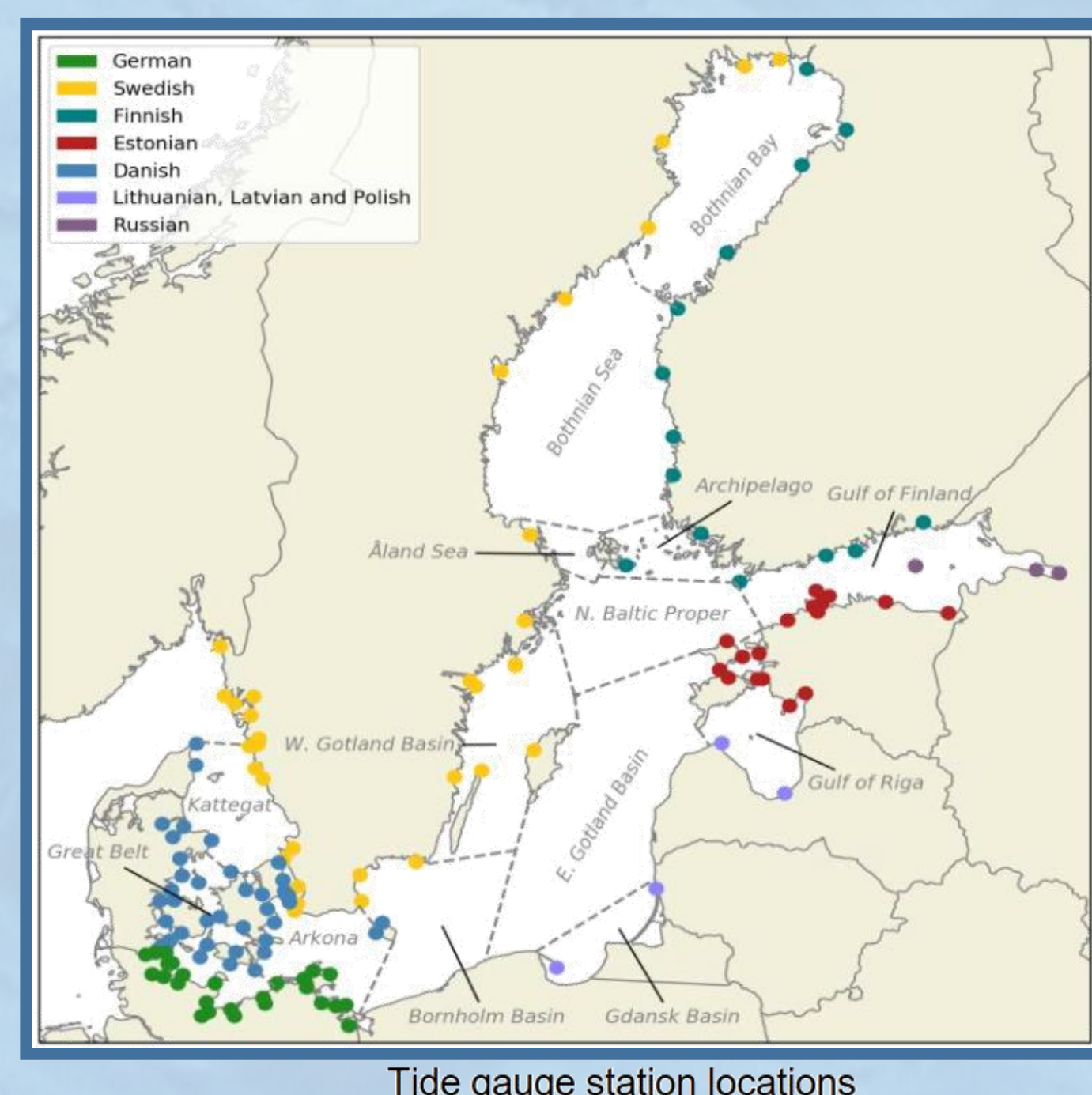
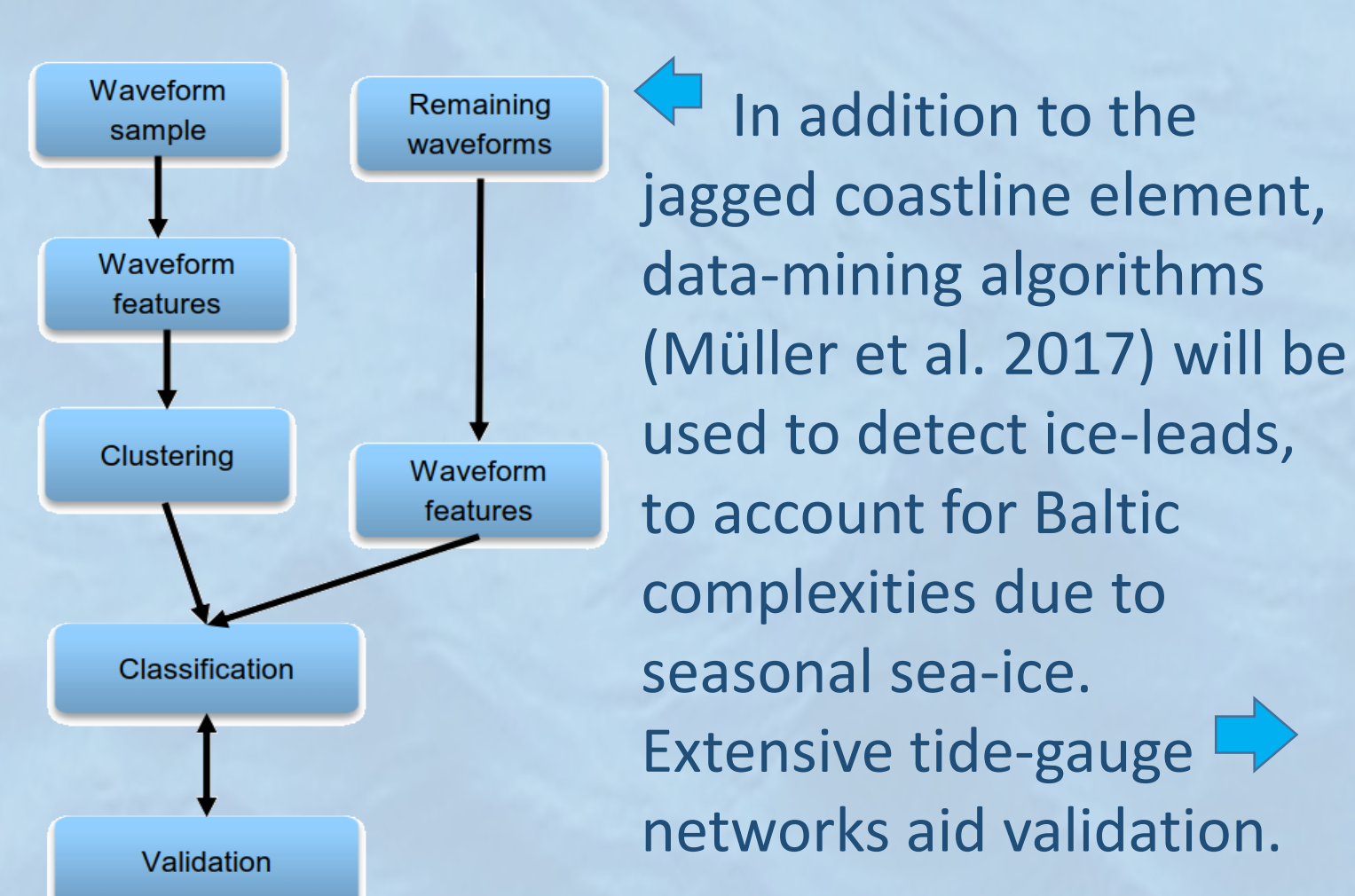


➤ A purer coastal signal from the low-tide Baltic can be used to improve re-tracking and estimation of sea level sea levels in areas with complex coastlines.

Research Approach



Re-tracking and validating will produce a series of inter-related sea-level products, and knowledge about (i) multi-mission calibration, (ii) classification approaches, (iii) regionally-tailored geophysical corrections, and (iv) harmonising trans-national gauge datasets.



Coastal Altimetry approaches: See Cipolini et al., 2014, & Passaro et al., 2017

Charting a course beyond Baltic SEAL

➤ It is essential to ensure the lessons learned and best practice approaches (i) integrate with global initiatives, and (ii) can be tailored to other regions.

➤ ESA Baltic SEAL is road-mapping the way forward for its research discoveries.



Join the conversation www.balticseal.eu

@Baltic_SEAL

