



Cite this: *Chem. Commun.*, 2016, 52, 11971

Received 14th July 2016,  
Accepted 25th August 2016

DOI: 10.1039/c6cc05807h

www.rsc.org/chemcomm

## Mechanistic analysis of aliphatic $\beta$ -lactones in *Vibrio harveyi* reveals a quorum sensing independent mode of action†

Weining Zhao,<sup>a</sup> Nicola Lorenz,<sup>b</sup> Kirsten Jung<sup>b</sup> and Stephan A. Sieber\*<sup>a</sup>

***N*-Acylhomoserine lactones are autoinducers of quorum sensing (QS) in Gram-negative bacteria. We exploit here the role of structurally related  $\beta$ -lactones in the inhibition of *Vibrio harveyi* bioluminescence and identify a derivative with nanomolar potency. Surprisingly, QS was not affected and combined proteomic/biochemical studies revealed insights into the cellular mode of action.**

Quorum sensing (QS) represents a common bacterial communication strategy controlling diverse cellular mechanisms including biofilm formation,<sup>1–3</sup> virulence<sup>4,5</sup> and bioluminescence.<sup>6</sup> A growing population of bacteria secretes small autoinducer molecules (AIs) that are sensed by cytoplasmic or transmembrane receptors. Upon exceeding the threshold concentration of AIs an intracellular signaling cascade activates the transcription of QS-regulated genes.<sup>7</sup> Bioluminescent strains such as *Vibrio harveyi* ATCC BAA-1116, recently reclassified as *Vibrio campbellii* ATCC BAA-1116,<sup>8</sup> served as a model organism in the mechanistic analysis of QS<sup>9,10</sup> as well as for inhibitor screens.<sup>11–13</sup> *V. harveyi* recognizes three different classes of AIs including species-specific HAI-1, the interspecies molecule AI-2 and *Vibrio* genus specific CAI-1. The binding of these AIs to their cognate receptors LuxN, LuxQ/P and CqsS induces a phosphorelay involving LuxU and LuxO to regulate the production of the QS master regulator LuxR. LuxR in turn induces transcription of genes required for bioluminescence, biofilm formation, or exoproteolytic activity, and represses the expression of the type III secretion system or siderophores.<sup>6</sup> The inhibition of QS represents an attractive strategy for combating bacterial infections by attenuating virulence and biofilm formation.<sup>4,5,14,15</sup> Several targets were exploited in the past that play crucial roles as key QS regulators, such as the QS-receptor itself or the master regulator LuxR.<sup>16</sup>

Interestingly, most compounds active in QS inhibition exploit certain structural motifs derived from the *N*-acylhomoserine lactone (AHL) scaffold.<sup>7</sup> Here, among other features, the length of the acyl chain as well as the homoserine lactone core was identified as essential to promote QS. Interestingly, structurally related fimbrolide natural products are potent irreversible inhibitors of QS and bioluminescence by binding to LuxS, an enzyme required for AI-2 biosynthesis, as well as LuxE, an enzyme required for luciferase activity.<sup>17</sup> Similarly, the structural composition of natural product  $\beta$ -lactones<sup>18</sup> resembles some features of AHL, raising the question of whether a direct interference with QS pathways is also possible.

We investigate here the effects of diverse  $\beta$ -lactones on *V. harveyi* bioluminescence and identify a  $\beta$ -lactone equipped with a long aliphatic chain that even exceeds the potency of fimbrolides. Target identification *via* activity based protein profiling (ABPP) revealed an outer membrane protein, enzymes involved in fatty acid biosynthesis as well as a cyclic-di-GMP synthase as specific binders. Proteomic studies showed that  $\beta$ -lactones affect pathways relevant for fatty acid synthesis as well as electron transfer required for bioluminescence.

To unravel if the electrophilic  $\beta$ -lactone scaffold could substitute the larger and unreactive  $\gamma$ -lactone core of AHLs, we tested a panel of previously established  $\beta$ -lactones in bioluminescence assays (Fig. S1, ESI†).<sup>19</sup> For benchmarking of their potencies, we included fimbrolides as the gold standard QS and bioluminescence inhibitors.<sup>17</sup> All the compounds (50  $\mu$ M final concentration) were added to the growing culture of *Vibrio harveyi* NBRC 15634, used here for initial screens, and bioluminescence was monitored in a plate reader. Out of the lactones tested, **R1** decorated with a nonenyl-chain at the 2-position and a methyl group at the 3-position revealed a strong reduction of luminescence by 90%, comparable to those of fimbrolides that ranged from 75 to 97% inhibition (Fig. S2, ESI†). A closer inspection of the  $\beta$ -lactone structures revealed that although some of these compounds exhibited an identical nonenyl-substituent at the 2-position, larger decorations at the 3-position such as decenyl (**T1**), pentynyl (**D3**) or phenylethyl (**U1**) significantly decreased the potency down to 20%.

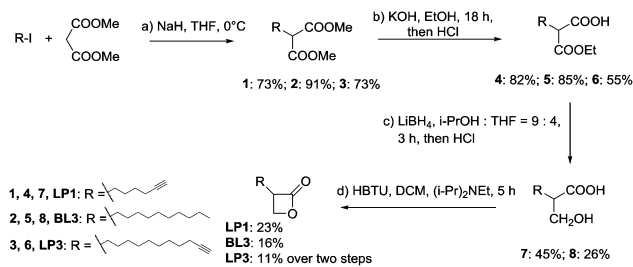
<sup>a</sup> Department of Chemistry, Center for Integrated Protein Science Munich (CIPSM), Technische Universität München, Garching, Germany.

E-mail: stephan.sieber@tum.de

<sup>b</sup> Center for Integrated Protein Science Munich (CIPSM) at the Department of Biology I, Ludwig-Maximilians-Universität München, Germany

† Electronic supplementary information (ESI) available. See DOI: 10.1039/c6cc05807h



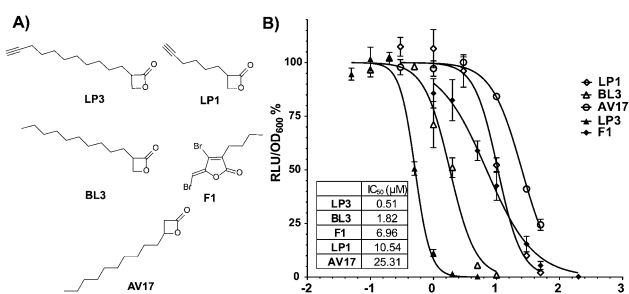


**Scheme 1** Synthesis of  $\beta$ -lactones. (a) NaH, THF, 0 °C, then add R-I; (b) KOH, EtOH, rt, 18 h, then add HCl; (c) LiBH<sub>4</sub>, i-PrOH : THF = 9 : 4, 3 h, then HCl; (d) HBTU, DCM, (i-Pr)<sub>2</sub>NEt, 5 h. THF = tetrahydrofuran, DCM = dichloromethane, HBTU = 2-(1H-benzotriazol-1-yl)-1,1,3,3-tetramethyluronium hexafluorophosphate.

Thus small substituents at the 2-position seem to be a key structural aspect of bioluminescence inhibition by  $\beta$ -lactones.

Based on the **R1** substitution pattern, we expanded the investigation of structural analogs to exploit the inhibitory effect on bioluminescence of various long-chain aliphatic substituents at either 2- or 3-position. Three additional derivatives were synthesized (**LP1**, **BL3** and **LP3**) and the collection was further complemented by the use of one previously established lactone (**AV17**).<sup>19</sup> The derivatives were prepared by the alkylation of dimethyl malonate with alkyl iodide, followed by partial hydrolysis of the diester, reduction of the remaining ester to a hydroxy group with LiBH<sub>4</sub> and cyclization by HBTU (Scheme 1 and Fig. 1A).

For the determination of bioluminescence IC<sub>50</sub> values, we switched to *V. harveyi* BAA-1116 as a commonly applied reference strain. As a general trend an increase of chain length at the 2-position dramatically enhanced the potency, while a substitution at the 3-position was largely inactive (Fig. 1B). Importantly, compounds **BL3** and **LP3** equipped with the longest aliphatic chains of this series, decyl and undecynyl, exhibited the best potencies with IC<sub>50</sub>s of 1.8 and 0.5  $\mu$ M, respectively. **LP3** as the most potent derivative exhibits a terminal alkyne, and was subsequently utilized for target identification *via* ABPP. For the identification of optimal labeling conditions, intact *V. harveyi* cells were incubated with various concentrations of **LP3**. Subsequently, the cells were lysed, separated in soluble and insoluble

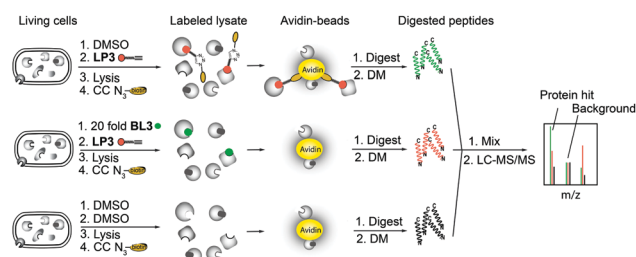


**Fig. 1** (A) Structures of compounds used in *V. harveyi* bioluminescence assay. (B) Residual bioluminescence production of *V. harveyi* after 30 min incubation with the compounds. Relative luminescence units (RLU) are normalized to cell density (OD<sub>600</sub>) and to the DMSO control. **F1** is used as the benchmark. The data were based on three biological experiments with technical triplicates.

fractions and clicked to rhodamine azide under copper catalysis to append a fluorescent dye for target visualization.<sup>20</sup> SDS-PAGE analysis of the labeled proteomes and subsequent fluorescence scanning revealed a concentration dependent labeling of distinct proteins (Fig. S3, ESI<sup>†</sup>). A concentration of 10  $\mu$ M **LP3** showed the optimal signal intensity and was selected for competition experiments. Here the cells were treated with various excesses of **BL3** (no alkyne tag) and subsequently incubated with the **LP3** probe. Interestingly, several protein bands in soluble and insoluble fractions vanished suggesting specific binding of both molecules into the same active sites (Fig. S3, ESI<sup>†</sup>).

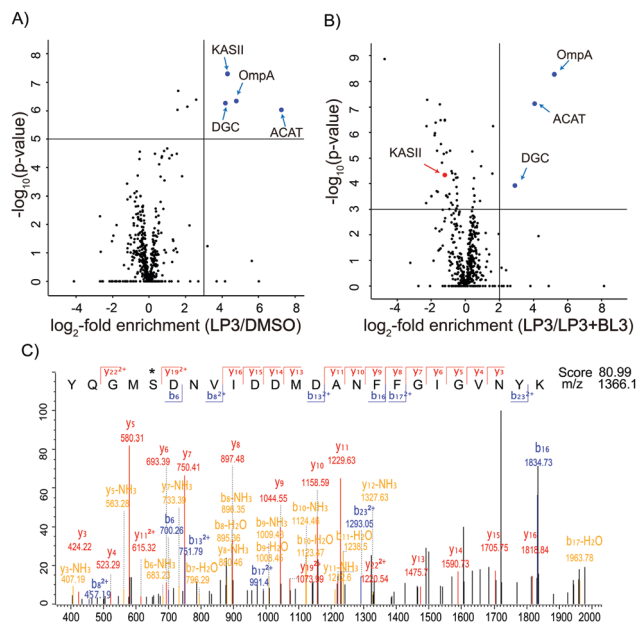
As fluorescence labeling does not directly reveal protein identities, we utilized a quantitative proteomic labeling strategy *via* direct mass-spectrometric target identification. In brief, intact cells were treated with the probe, lysed, clicked to biotin azide and labeled proteins were enriched on avidin beads (Fig. 2).<sup>21</sup> To account for unspecific avidin background binders, an identical experiment was carried out with DMSO instead of the probe in parallel. Avidin bound proteins were released by tryptic digestion and the resulting peptides were appended to different isotopes *via* dimethyl labeling.<sup>22</sup> The samples were pooled and analyzed *via* LC-MS/MS to determine isotope ratios. These were ranked in the corresponding volcano plots according to their enrichment and significance (proteins with an enrichment ratio of 8 and *p*-value < 0.00001 for insoluble samples and a ratio of 4 with *p*-value < 0.003 for soluble proteins were regarded as hits). Interestingly, insoluble and soluble proteome fractions showed distinct target proteins including a 3-oxoacyl-[acyl-carrier-protein] synthase (KASII), the outer membrane protein A (OmpA) and an acetyl-CoA-acetyltransferase (ACAT). Surprisingly, a putative diguanylate cyclase with a GGDEF-domain (DGC) was not detected in the soluble fraction but emerged as the best target from the insoluble samples (Fig. 3A and Fig. S4A, ESI<sup>†</sup>). To confirm that these proteins are specific  $\beta$ -lactone targets, we performed a competition experiment with a 20-fold excess of **BL3** and subsequent probe labeling in parallel (Fig. 2, 3B and Fig. S4B, ESI<sup>†</sup>). Interestingly, with the exception of KASII, all other targets were efficiently outcompeted. A recombinant expression of the remaining three proteins in *Escherichia coli* confirmed their specific interaction with **LP3** upon fluorescence labeling of SDS-gels (Fig. S5, ESI<sup>†</sup>).

A closer inspection of the three proteins revealed that, with the exception of ACAT, the functional roles of DGC and



**Fig. 2** Principle of gel-free activity based protein profiling (ABPP) employing isotope labeling of amino acids. CC denotes click chemistry and DM denotes stable isotope dimethyl labeling.





**Fig. 3** (A) Volcano plot of gel-free quantitative ABPP experiments with 10 μM LP3 vs. DMSO in *V. harveyi* insoluble fraction. The blue dots depict enriched targets (criteria: log<sub>2</sub>-fold enrichment ≥ 3 and -log<sub>10</sub>(p-value) ≥ 5). (B) Volcano plot of *V. harveyi* insoluble fraction treated with 10 μM LP3 vs. a 20-fold excess of BL3 (LP3 + BL3). The blue dots depict selected targets that are outcompeted by BL3 (criteria: log<sub>2</sub>-fold enrichment ≥ 2 and -log<sub>10</sub>(p-value) ≥ 3). The red dots denote those targets enriched by LP3 but not outcompeted by BL3. Both results were derived from three biological replicates with technical triplicates and -log<sub>10</sub>(p-values) were calculated using a two-sided one sample Student's t-test based on Z scores with Perseus. (C) MS/MS sequencing shows the binding of LP3 to Ser167 of OmpA. \* denotes the modified amino acid.

OmpA are less explored.<sup>23</sup> DGC is a predicted cyclic-di-GMP cyclase. Cyclic-di-GMP acts as a second messenger in bacteria regulating motility and biofilm production.<sup>24</sup> In *V. harveyi* there are 31 proteins, which have a GGDEF-domain and are putative DGCs. This suggests that the production of cyclic-di-GMP is an important trait and that multiple proteins could substitute each other. Due to the predicted effect of cyclic-di-GMP on motility, we performed swimming plate assays in the presence and absence of LP3 and BL3 (Fig. S6, ESI<sup>†</sup>).<sup>25</sup> Interestingly, in the presence of the compounds, the cells consistently swim a slightly larger distance compared to the DMSO treated samples. In addition, the lactone treated bacteria formed a diffuse outer ring on the plates which was much sharper in the case of DMSO treated samples, suggesting that cells are not fully chemotactic.<sup>26</sup> Although the exact role of the identified DGC in *V. harveyi* is elusive and it is unclear if other homologs could substitute its inhibition, the effects observed in the swimming plate assays point towards an impairment of the cyclic-di-GMP mediated motility.

OmpA is a β-barrel protein of the outer membrane. In *E. coli* this protein was found to be important for membrane stability.<sup>27</sup> β-Lactones preferentially react with serine or cysteine residues of elevated nucleophilicity, e.g., in enzyme active sites.

As OmpA lacks enzymatic activity we were interested to unravel the lactone binding site. Recombinant OmpA was incubated with LP3, digested and analyzed by LC-MS/MS sequencing and serine167 was identified as the modification site (Fig. 3C). To further analyze if OmpA was relevant for the observed bioluminescence phenotype, we constructed a *V. harveyi* ompA deletion mutant. Labeling with LP3 confirmed a lack of OmpA in the mutant *via* fluorescence SDS-gel analysis (Fig. S7, ESI<sup>†</sup>). However, the mutant strain exhibited almost the same behavior as the wild type with respect to growth, motility and bioluminescence, suggesting that OmpA is not responsible for the lactone mediated phenotype (Fig. S8, ESI<sup>†</sup>).

QS in *V. harveyi* is controlled by a phosphorylation cascade which allows the determination of the interaction with LP3 at various stages.<sup>28</sup> We thus first tested the effect of LP3 and BL3 on the LuxN (AHL receptor) mediated phosphotransfer to LuxU *in vitro*. Neither β-lactone revealed a change in phosphorylation, suggesting that there is no direct interaction with the receptor (Fig. S9, ESI<sup>†</sup>). In addition, bioluminescence produced from a *luxO* deletion strain (constitutively QS-ON) was still inhibited by LP3 and BL3, suggesting a downstream target (Fig. S10, ESI<sup>†</sup>). To clarify if QS is addressed at all by β-lactones we additionally analyzed the exoproteolytic activity, another QS-dependent phenotype, which should be reduced in the case of QS inhibition.<sup>6</sup> However, both lactones did not show any effect, highlighting a QS independent mechanism (Fig. S11, ESI<sup>†</sup>).

To further dissect the β-lactone mode of action, we performed a global proteome analysis of β-lactone and DMSO treated cells. *V. harveyi* was incubated with 25 μM BL3 or DMSO for 2 h, lysed, and the proteomes were digested by trypsin treatment. Isotope labeling of each sample followed by consolidated LC-MS/MS analysis revealed several significantly up- and down-regulated proteins under β-lactone treatment (Fig. 4). Interestingly, among the most down-regulated proteins are the α and β subunits of the electron transfer flavoprotein (ETF) under β-lactone treatment. ETF is involved in the β-oxidation of fatty acids and thereby linked to acyl- and acetyl-CoA production.<sup>29,30</sup> The down-regulation of ETF may thus stall the myristic acid biosynthesis required for luciferase activity establishing a putative link to the observed reduction in bioluminescence with the β-lactone.<sup>31</sup> In addition, we utilized the MS-based method for a comparison of the ompA deletion and wild type to compare profiles with the β-lactone treated samples (Fig. S12, ESI<sup>†</sup>). Malonyl CoA-acyl carrier protein transacylase (FabD), an enzyme also involved in the fatty acid metabolism, was among the most up-regulated proteins in the mutant.<sup>32</sup> Interestingly, the same protein also exhibited significantly elevated levels in the case of β-lactone treatment connecting OmpA, aliphatic lactone binding and fatty acid biosynthesis. Although this connection is intriguing, future studies are needed to further elucidate the function and putative role of OmpA in fatty acid biosynthesis.

Due to the structural similarity between AHLs produced by Gram-negative bacteria and β-lactones, we analyzed their potential effects on QS-regulated bioluminescence in *V. harveyi*. Although β-lactone LP3 was identified as a nanomolar



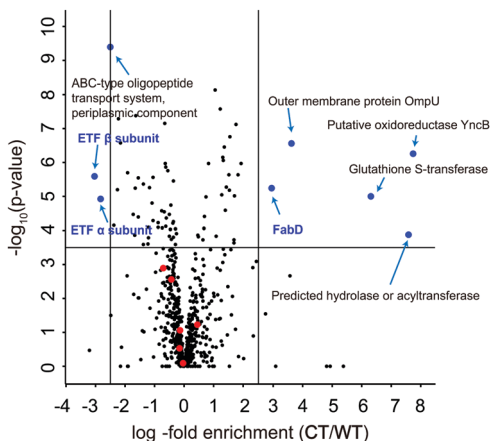


Fig. 4 Volcano plot of whole proteome comparison between 25  $\mu\text{M}$  BL3 treated *V. harveyi* ATCC BAA-1116 (CT) and non-treated samples (WT). The blue dots depict selected targets that are significantly up-regulated or down-regulated (criteria:  $\log_2$ -fold enrichment  $\geq 2.5$  or  $\leq -2.5$  and  $-\log_{10}(p\text{-value}) \geq 3.5$ ). Red dots represent proteins expressed from *luxCDABEG* operon. The targets discussed in the text are highlighted in blue. The data were derived from three biological replicates with technical triplicates and  $-\log_{10}(p\text{-value})$  were calculated using a two-sided one sample Student's *t*-test based on Z scores with Perseus.

bioluminescence inhibitor, a detailed mode of action analysis suggested no direct link to QS. Instead the compound likely interfered with the fatty acid metabolism, which is largely attributed to its long aliphatic chain. None of the identified LP3 targets were directly linked to bioluminescence; however, the down-regulation of ETF  $\alpha$  and  $\beta$  subunits pointed towards luciferase activity, which needs to be further evaluated in future studies, e.g. by the use of photoprobes to analyze reversible binding target proteins. In conclusion, although AHLs and long chain aliphatic  $\beta$ -lactones share similar structural motifs the identity of the lactone core scaffold (4 vs. 5 membered ring) remains a crucial switch between QS regulation and QS-independent inhibition of bioluminescence.

S. A. S. acknowledges the funding by the Deutsche Forschungs-gemeinschaft: FOR1406 and the ERC starting grant (250924-antibacterials) (to S. A. S.), and Exc114/2 and Ju270/13-1 (to K. J.). W. Z. acknowledges the support from the China Scholarship Council.

## Notes and references

- J. S. Dickschat, *Nat. Prod. Rep.*, 2010, **27**, 343.
- C. Solano, M. Echeverez and I. Lasa, *Curr. Opin. Microbiol.*, 2014, **18**, 96.
- I. Olsen, *Eur. J. Clin. Microbiol. Infect. Dis.*, 2015, **34**, 877.
- B. Wang and T. W. Muir, *Cell Chem. Biol.*, 2016, **23**, 214.
- I. Castillo-Juarez, T. Maeda, E. A. Mandujano-Tinoco, M. Tomas, B. Perez-Eretza, S. J. Garcia-Contreras, T. K. Wood and R. Garcia-Contreras, *World J. Clin. Cases*, 2015, **3**, 575.
- C. Anetzberger, M. Reiger, A. Fekete, U. Schell, N. Stambrau, L. Plener, J. Kopka, P. Schmitt-Kopplin, H. Hilbi and K. Jung, *PLoS One*, 2012, **7**, e48310.
- W. R. Galloway, J. T. Hodgkinson, S. D. Bowden, M. Welch and D. R. Spring, *Chem. Rev.*, 2011, **111**, 28.
- B. Lin, Z. Wang, A. P. Malanoski, E. A. O'Grady, C. F. Wimpee, V. Vuddhakul, N. Alves Jr, F. L. Thompson, B. Gomez-Gil and G. J. Vora, *Environ. Microbiol. Rep.*, 2010, **2**, 81.
- M. G. Surette, M. B. Miller and B. L. Bassler, *Proc. Natl. Acad. Sci. U. S. A.*, 1999, **96**, 1639.
- T. Defoirdt, C. M. Miyamoto, T. K. Wood, E. A. Meighen, P. Sorgeloos, W. Verstraete and P. Bossier, *Environ. Microbiol.*, 2007, **9**, 2486.
- J. A. Smith, J. Wang, S. M. Nguyen-Mau, V. Lee and H. O. Sintim, *Chem. Commun.*, 2009, 7033.
- T. Jiang and M. Li, *Expert Opin. Ther. Pat.*, 2013, **23**, 867.
- M. Guo, S. Gamby, Y. Zheng and H. O. Sintim, *Int. J. Mol. Sci.*, 2013, **14**, 17694.
- G. Brackman and T. Coenye, *Curr. Pharm. Des.*, 2015, **21**, 5.
- W. R. Abraham, *Antibiotics*, 2016, **5**, 3.
- S. T. Rutherford and B. L. Bassler, *Cold Spring Harbor Perspect. Med.*, 2012, **2**, a012427.
- W. Zhao, N. Lorenz, K. Jung and S. A. Sieber, *Angew. Chem., Int. Ed.*, 2016, **55**, 1187.
- T. Bottcher and S. A. Sieber, *Angew. Chem., Int. Ed.*, 2008, **47**, 4600.
- M. Gersch, F. Gut, V. S. Korotkov, J. Lehmann, T. Bottcher, M. Rusch, C. Hedberg, H. Waldmann, G. Klebe and S. A. Sieber, *Angew. Chem., Int. Ed.*, 2013, **52**, 3009.
- V. V. Rostovtsev, L. G. Green, V. V. Fokin and K. B. Sharpless, *Angew. Chem., Int. Ed.*, 2002, **41**, 2596.
- M. H. Wright and S. A. Sieber, *Nat. Prod. Rep.*, 2016, **33**, 681.
- P. J. Boersema, R. Raijmakers, S. Lemeer, S. Mohammed and A. J. Heck, *Nat. Protoc.*, 2009, **4**, 484.
- S. Thompson, F. Mayerl, O. P. Peoples, S. Masamune, A. J. Sinskey and C. T. Walsh, *Biochemistry*, 1989, **28**, 5735.
- D. A. Ryjenkov, M. Tarutina, O. V. Moskvina and M. Gomelsky, *J. Bacteriol.*, 2005, **187**, 1792.
- D. Srivastava, M. L. Hsieh, A. Khataokar, M. B. Neiditch and C. M. Waters, *Mol. Microbiol.*, 2013, **90**, 1262.
- G. L. Hazelbauer, R. E. Mesibov and J. Adler, *Proc. Natl. Acad. Sci. U. S. A.*, 1969, **64**, 1300.
- Y. Wang, *Biochem. Biophys. Res. Commun.*, 2002, **292**, 396.
- K. Jung, *Nat. Chem. Biol.*, 2011, **7**, 502.
- A. E. Kazakov, D. A. Rodionov, E. Alm, A. P. Arkin, I. Dubchak and M. S. Gelfand, *J. Bacteriol.*, 2009, **191**, 52.
- Y. Fujita, H. Matsuoka and K. Hirooka, *Mol. Microbiol.*, 2007, **66**, 829.
- E. A. Meighen, *Microbiol. Rev.*, 1991, **55**, 123.
- J. W. Campbell and J. E. Cronan, *Annu. Rev. Microbiol.*, 2001, **55**, 305.

