



# The NEDD8 modification pathway in plants

Julia Mergner and Claus Schwechheimer\*

Plant Systems Biology, Technische Universität München, Freising, Germany

**Edited by:**

Pascal Genschik, Centre National de la Recherche Scientifique, France

**Reviewed by:**

Xingyi Guo, Albert Einstein College of Medicine, USA

Gerhard Braus, Georg-August-University, Germany

**\*Correspondence:**

Claus Schwechheimer, Plant Systems Biology, Technische Universität München, Emil-Ramann-Straße 4, 85354 Freising, Germany  
e-mail: claus.schwechheimer@wzw.tum.de

NEDD8, in plants and yeasts also known as RELATED TO UBIQUITIN (RUB), is an evolutionarily conserved 76 amino acid protein highly related to ubiquitin. Like ubiquitin, NEDD8 can be conjugated to and deconjugated from target proteins, but unlike ubiquitin, NEDD8 has not been reported to form chains similar to the different polymeric ubiquitin chains that have a role in a diverse set of cellular processes. NEDD8-modification is best known as a post-translational modification of the cullin subunits of cullin-RING E3 ubiquitin ligases. In this context, structural analyses have revealed that neddylation induces a conformation change of the cullin that brings the ubiquitylation substrates into proximity of the interacting E2 conjugating enzyme. In turn, NEDD8 deconjugation destabilizes the cullin RING ligase complex allowing for the exchange of substrate recognition subunits via the exchange factor CAND1. In plants, components of the neddylation and deneddylation pathway were identified based on mutants with defects in auxin and light responses and the characterization of these mutants has been instrumental for the elucidation of the neddylation pathway. More recently, there has been evidence from animal and plant systems that NEDD8 conjugation may also regulate the behavior or fate of non-cullin substrates in a number of ways. Here, the current knowledge on NEDD8 processing, conjugation and deconjugation is presented, where applicable, in the context of specific signaling pathways from plants.

**Keywords:** CAND1, COP9 signalosome (CSN), cullin, E3 ubiquitin ligase, F-BOX PROTEIN (FBP), NEDD8, RELATED TO UBIQUITIN (RUB), ubiquitin

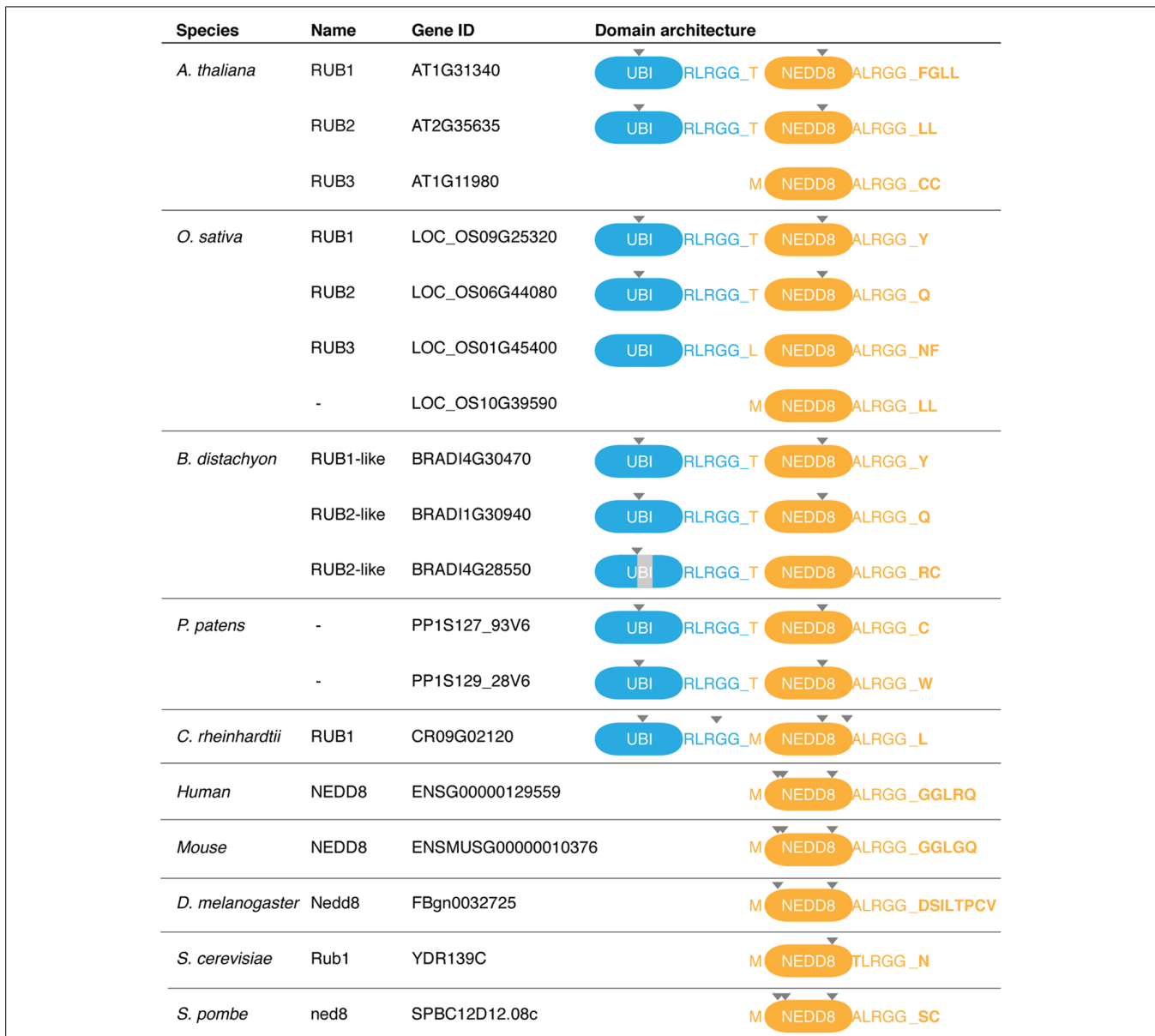
## NEDD8 IS AN EVOLUTIONARILY CONSERVED REGULATOR

NEDD8 (neural precursor cell expressed, developmentally down-regulated8), in plants and yeasts also known as RELATED TO UBIQUITIN (RUB, hitherto referred to as NEDD8), is a 76 amino acid protein that was originally identified as a highly expressed gene from embryonic mouse brains (Kumar et al., 1993). Amongst all ubiquitin-like modifiers (UBLs), NEDD8 and ubiquitin are most closely related to each other and NEDD8 proteins, like other UBLs, display remarkable sequence conservation across species (Vierstra, 2012). Like ubiquitin, NEDD8 is conjugated to its substrate protein through the formation of an isopeptide bond between its C-terminal glycine and a lysine residue of the target protein (neddylation) but there is no known biological function for free NEDD8.

NEDD8 orthologs can be identified in all eukaryotic species that have sequenced genomes. While NEDD8 is a single gene in humans, mouse, and fruit fly, several copies of *NEDD8* are encoded by the genomes of the plant species *Arabidopsis* (*Arabidopsis thaliana*; Rao-Naik et al., 1998), rice (*Oryza sativa*), *Brachypodium* (*Brachypodium distachyon*), and the moss *Physcomitrella patens* (Figure 1). All NEDD8 proteins require proteolytic processing of their C-termini to generate mature NEDD8 with a C-terminal glycine required for NEDD8 conjugation (Figure 1). An additional unique feature of plant NEDD8 is the existence of ubiquitin-NEDD8 gene fusions. While gene fusions of ubiquitin to ubiquitin itself or other genes have been reported in other species, *NEDD8* is an unfused gene in animals and yeasts but not in plants. This ubiquitin-NEDD8 fusion structure is found in *Arabidopsis* RUB1

and RUB2 and seems to be conserved among plants, mosses and algae (Figure 1; Rao-Naik et al., 1998; Vierstra and Callis, 1999; Shin et al., 2011). In RUB1 and RUB2, a single ubiquitin is fused head-to-tail to the N-terminus of NEDD8 and both ubiquitin-NEDD8 fusions then require post-translational processing to release monomeric ubiquitin and NEDD8 (Figure 1). Furthermore, plant genomes contain an unfused monomeric form of NEDD8, RUB3 in *Arabidopsis*, that can additionally be distinguished from the other RUB genes because it lacks an intron that is present at a conserved position in other RUBs, e.g., in *Arabidopsis* RUB1 and RUB2 (Figure 1). The absence of an intron suggests that this less complex RUB3 may be more ancient than the intron-containing RUB1 or RUB2 or that RUB3 originated from an mRNA intermediate and a retrotransposition event (Huang et al., 2012).

Similarly to the high sequence conservation observed between human and *Arabidopsis* ubiquitin (96% amino acid sequence identity), also NEDD8 proteins are highly conserved between species (83% identity between human and *Arabidopsis*). This high level conservation is suggestive for an important function of NEDD8 conjugation (neddylation) in eukaryotic cells and a highly conserved neddylation and deneddylation machinery. Indeed, loss-of-*NEDD8* function causes lethality at an early developmental stage in most model organisms and also in plants, with the notable exception of *Saccharomyces cerevisiae* (Lammer et al., 1998; Liakopoulos et al., 1999; Jones and Candido, 2000; Osaka et al., 2000; Tateishi et al., 2001; Ou et al., 2002; Dhar-masiri et al., 2003; Maytal-Kivity et al., 2003; Bostick et al., 2004).



**FIGURE 1 | Protein domain organization of NEDD8 proteins from several representative species.** Gene identification numbers (Gene IDs) are as listed in [www.ensemblgenomes.org](http://www.ensemblgenomes.org). Specifically indicated are the last five amino acids of the respective proteins before the proteolytic cleave sites, the first amino acid of NEDD8 and the proteins' C-terminal amino acids. Proteolytic processing occurs after the C-terminal RGG residues and is indicated by an underscore. Positions of introns in the respective genes are indicated by a

triangle. The light gray area in BRADI4G28550 highlights an apparent 22 amino acid deletion in the ubiquitin part of the protein. *A. thaliana* (*Arabidopsis thaliana*), *O. sativa* (*Oryza sativa*, rice), *B. distachyon* (*Brachypodium distachyon*), *P. patens* (*Physcomitrella patens*, moss), *C. reinhardtii* (*Chlamydomonas reinhardtii*, algae), *D. melanogaster* (*Drosophila melanogaster*, fruit fly), *S. cerevisiae* (*Saccharomyces cerevisiae*, baker's yeast), *S. pombe* (*Schizosaccharomyces pombe*, fission yeast).

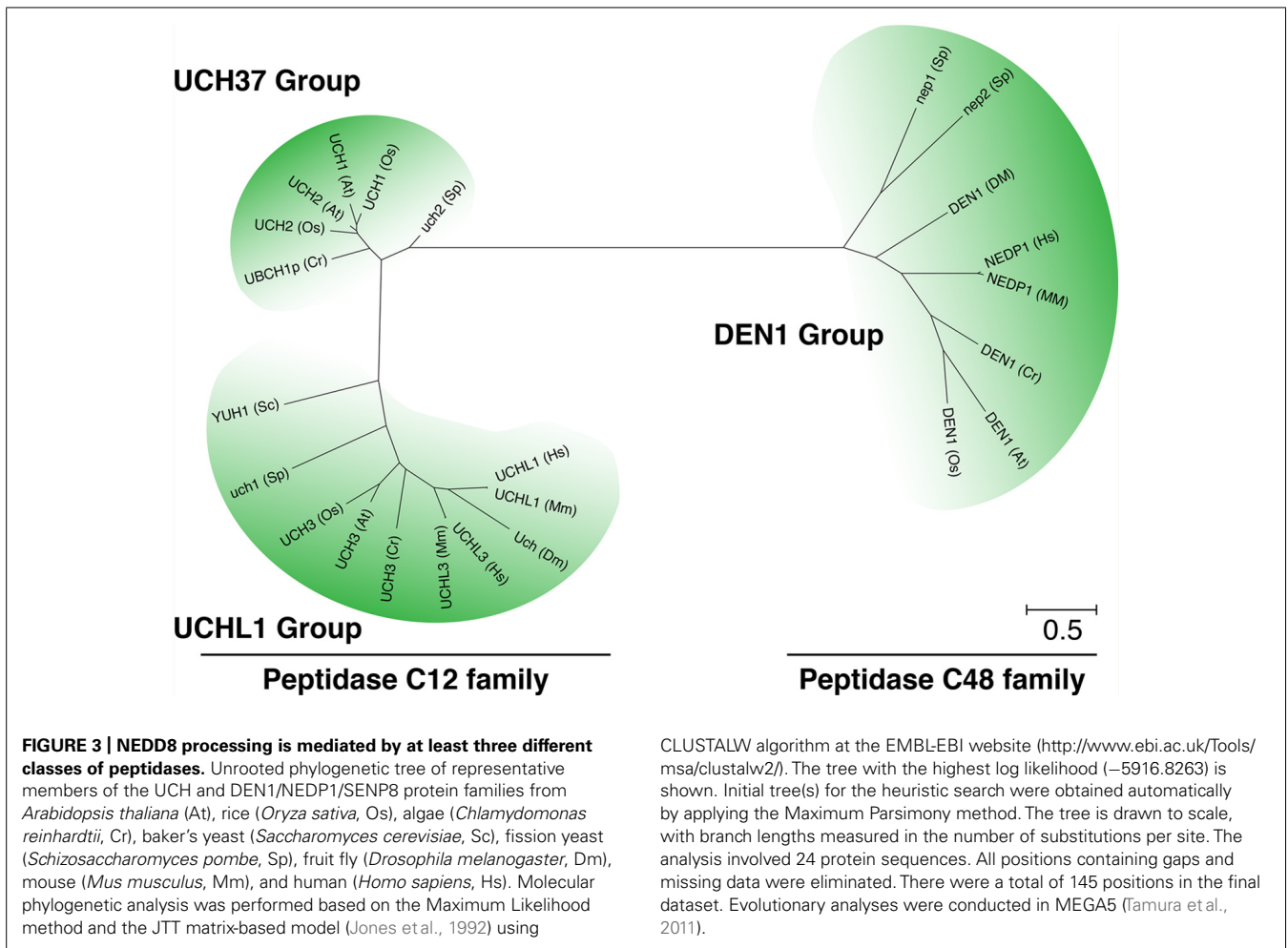
In *Arabidopsis*, not the single but the combined knockout of the genes *RUB1* and *RUB2* leads to a developmental arrest at the embryonic two-cell stage (Bostick et al., 2004). Thus, *NEDD8* genes and neddylation are essential for growth and development in plants. Plants with reduced *NEDD8* gene expression are dwarfed, partially insensitive to root growth inhibitory concentrations of the plant hormone auxin and also partially defective in auxin-induced lateral root formation (Bostick et al., 2004). As will be outlined below, auxin insensitivity phenotypes are reliable and at

the same time the most obvious readouts of neddylation pathway mutants.

## NEDD8 PROCESSING

*NEDD8* is conjugated to the protein substrates via an isopeptide bond between its C-terminal glycine and a lysine of the target protein (Figure 2). *NEDD8*, like ubiquitin and most UBLs, is expressed as an inactive precursor with a short C-terminal extension that consists of one or several amino acids that need to be





role in NEDD8 processing remains to be examined but the comparatively weak morphological phenotype as well as the absence of an apparent cullin neddylation phenotype already suggests that the two UCH proteins may not have a major function in this process.

## NEDDYLATION

NEDD8 is conjugated to target proteins in a manner that is highly similar to ubiquitin conjugation (Figure 2). NEDD8 is activated by an E1 NEDD8 activating enzyme (NAE) and then passed on to an E2 NEDD8 conjugating enzyme of the ubiquitin-conjugating (UBC) enzyme family from where the protein is ultimately transferred to its substrate protein. The best-studied NEDD8 conjugates are the cullin subunits of cullin-RING-type E3 ubiquitin ligases (CRLs; Hua and Vierstra, 2011). CRLs are a family of evolutionarily conserved E3 ligases that are composed of a core complex, comprised of a cullin subunit and the RING BOX PROTEIN1 (RBX1), as well as a ubiquitylation substrate recognition module. In plants, three different types of CRL complexes can be distinguished based on the identity of the cullin subunits CULLIN1, CULLIN3, or CULLIN4 and the identity of their respective substrate recognition module (Lammer et al., 1998; Ruegger et al., 1998; Dieterle et al., 2005; Figueroa et al., 2005; Gingerich et al.,

2005; Bernhardt et al., 2006; Chen et al., 2006). The CRL subunit RBX1 is common to all CRLs and serves to promote NEDD8 conjugation.

Structural analyses of cullin neddylation revealed that NEDD8 conjugation causes a conformational change in subdomains of the cullin and RBX1 subunits (Duda et al., 2008; Boh et al., 2011). Neddylation also eliminates the binding of the exchange factor CULLIN-ASSOCIATED-NEDD8-DISSOCIATED1 (CAND1) and locks the CRL in an active state. Thus, neddylation controls CRL activity by promoting conformational changes that favor substrate ubiquitylation. CRL neddylation can then also lead to the recruitment of additional regulatory factors (den Besten et al., 2012).

## THE NEDDYLATION PATHWAY AND AUXIN INSENSITIVITY

As will be discussed in more detail below, loss of cullin neddylation or cullin deneddylation affect CRL function by promoting or, respectively, preventing interactions with the substrate receptor exchange factor CAND1. In the plant and neddylation biology context, the *Arabidopsis* CULLIN1-containing E3 ligase SCF<sup>TIR1</sup> with the substrate recognition module composed of the F-box protein (FBP) TRANSPORT INHIBITOR RESISTANT1 (TIR1) and its adaptor subunit *ARABIDOPSIS* SKP1 (ASK) is highly



relevant (Ruegger et al., 1998; del Pozo and Estelle, 1999). TIR1, functioning at the same time also as an auxin receptor, binds AUX/IAA transcriptional repressors in an auxin-dependent manner and targets AUX/IAAs for ubiquitylation and degradation by the 26S proteasome (Gray et al., 2001; Tan et al., 2007). AUX/IAAs and auxin-induced AUX/IAA degradation regulate a number of important developmental and morphological processes throughout plant development: *bodenlos* (*bdl*) mutants expressing a stabilized (non-degradable) variant of the AUX/IAA protein *bodenlos/iaa14* (*bdl/iaa14*) are deficient in embryonic root differentiation and are consequently rootless (Hamann et al., 1999; Weijers et al., 2005). *axr3* mutants express the stabilized *axr3/iaa17* protein and this mutation allows for root elongation in the presence of root growth-inhibiting auxin concentrations (Gray et al., 2001). The link between auxin insensitivity (auxin resistance), AUX/IAA degradation and CULLIN1 could be established because the CULLIN1 alleles *axr6-1* and *axr6-2* were identified based on their auxin insensitivity (Hobbie et al., 2000; Shen et al., 2002; Hellmann et al., 2003; Quint et al., 2005; Esteve-Bruna et al., 2013). While homozygous *axr6-1* and *axr6-2* loss-of-function mutants arrest development during embryogenesis, the heterozygous mutants display the auxin-insensitive root growth elongation phenotype. Furthermore, double mutants of *axr6-1* or *axr6-2* with other mutants of the auxin and neddylation pathway are defective in root differentiation and thereby mimic the characteristic phenotype of the *bdl* mutant (Hobbie et al., 2000; Hellmann et al., 2003; Quint et al., 2005; Esteve-Bruna et al., 2013).

### NEDD8 ACTIVATION

Both, defects in root differentiation as well as auxin-insensitive root elongation have been used extensively as phenotypes for the identification and characterization of *Arabidopsis* neddylation mutants. *auxin resistant1* (*axr1*) is a mutant of the NAE enzyme AXR1 and was identified due to its defects in auxin response that could later be explained by impairment in the degradation of the AUX/IAA protein AXR3 (Lincoln et al., 1990; Leyser et al., 1993; del Pozo et al., 1998). In *Arabidopsis*, *axr1* mutants display an auxin-insensitive root growth phenotype but do not fully impair NEDD8 conjugation the function of the AXR1-paralog *AXR1-LIKE* (*AXL*) also needs to be deleted (Dharmasiri et al., 2007). *axr1 axl1* double mutants have a more severe phenotype than *axr1* mutants in that they are defective in embryonic root differentiation and mimic the *bdl* mutant phenotype (Dharmasiri et al., 2007). *Arabidopsis* AXR1 and AXL proteins appear to be equivalent at the biochemical level but interestingly have a differential ability to complement the *axr1* mutant phenotype when expressed from the *AXR1* promoter (Dharmasiri et al., 2007; Hotton et al., 2011). While NEDD8 activation is carried out by a single protein in animals and yeasts, NAE is a heterodimer in plants of AXR1/AXL and E1 C-TERMINAL RELATED1 (*ECR1*) corresponding to the protein's N- and C-termini, respectively (Figure 2; del Pozo et al., 1998; Hotton et al., 2011). An *ecr1-1* mutant was identified in a screen for mutants with differential auxin sensitivity and *axr1/axl* mutants as well as *ecr1* mutants are defective in cullin neddylation (Woodward et al., 2007).

### NEDD8 CONJUGATION

RUB1 CONJUGATING ENZYME1 (*RCE1*) was identified in *Arabidopsis* based on its homology to human UBC12 (del Pozo and Estelle, 1999). An *rce1-1* insertion mutant with significantly reduced *RCE1* expression levels was subsequently isolated and found to be strongly impaired in cullin neddylation (Dharmasiri et al., 2003). *rce1-1* mutants display auxin insensitive root growth phenotypes and fail to differentiate a primary root when combined with *axr1*. Two additional *rce1* alleles were recently found in a suppressor screen of the auxin overproducing *sur2* mutant (Pacurar et al., 2012). Interestingly, both of these *rce1* alleles would be expected to interfere significantly with the biochemical activity of *RCE1* since they carry a nonsense and splice site mutation in exon 4, respectively. Analyzing the extent to which *RCE1* function is affected in these alleles is certainly interesting because the unexpectedly weak phenotype of these supposedly strong alleles could be considered indicative for the existence of functionally redundant NEDD8 conjugating enzymes.

### NEDD8 LIGATION

The CRL core subunit RING BOX1 (*RBX1*) is one candidate for an E3 NEDD8 ligase (Morimoto et al., 2003). *RBX1* is encoded by two genes in *Arabidopsis* and its function as CRL subunit and as NEDD8 ligase was addressed in mutants, antisense and overexpression lines (Gray et al., 2002; Lechner et al., 2002; Schwechheimer et al., 2002). *RBX1* interacts with *RCE1* and while cullin neddylation is decreased in the absence of *RBX1* it is increased when *RBX1* is overexpressed (Gray et al., 2002).

The protein DEFECTIVE IN CULLIN NEDDYLATION1 (*DCN1*) has also been described as an E3 NEDD8 ligase (Kurz et al., 2005; Kurz et al., 2008; Meyer-Schaller et al., 2009). Based on yeast studies, it has recently been proposed that *DCN1* increases the substrate specificity of *RBX1* by directing the *RBX1*-bound NEDD8-E2 toward the cullin (Scott et al., 2010). Additionally, it was shown that the interaction between *DCN1* and UBC12 is regulated by the N-terminal acetylation of the UBC12 E2 enzyme (Scott et al., 2011). The analysis of *DCN1-LIKE* proteins, of which there are five in humans, has also revealed that at least one member of the protein family, *DCNL3*, is bound to the plasma membrane (Meyer-Schaller et al., 2009). Studies of a mammalian CULLIN2-containing CRL further revealed that *DCN1-LIKE1* can engage in interactions between the cullin and the respective substrate receptor subunit, and more importantly, that this interaction is strengthened when the substrate receptor is loaded with cargo (Heir et al., 2013). At least in this case, *DCN1-LIKE1* may function as a sensor for degradation substrate availability and consequently promote neddylation. Thus, *DCN1* proteins may contribute to the regulation of E3 ligase activity by targeting E3 ligases to or by activating them in specific subcellular locations.

As yet, *DCN1* or *DCN1-LIKE* proteins have not been analyzed in plants but AT3G12760 is a candidate for a direct *DCN1* ortholog from *Arabidopsis*. A second *DCN1-LIKE* protein, less closely related to *DCN1* than AT3G12760, was identified as *anti-auxin resistant3* (*AAR3*) in a screen for mutants that showed resistance to the anti-auxin *p*-chlorophenoxyisobutylic acid. The same screen also identified mutant alleles of *TIR1* and *CULLIN1* and, based on the shared phenotype of these mutants,

AAR3/DNC1-LIKE would qualify as a candidate regulator of NEDD8 ligation and SCF<sup>TIR1</sup> function (Biswas et al., 2007). Unfortunately, the biochemical function of AAR3/DNC1-LIKE in the context of cullin neddylation has not been examined as yet. There is also one further *Arabidopsis* gene that may encode for an additional DNC1-LIKE protein. Thus, the biochemical and biological functions of *DNC1-LIKE* genes from *Arabidopsis* remain to be investigated.

In yeast, also TFB3, a RING domain subunit of the general transcription factor TFIIH was found to promote neddylation in addition to RBX1 and DNC1 (Rabut et al., 2011). The identification of TFB3 was based on initial observations that CULLIN4 neddylation in yeast was independent from RBX1 and DNC1. The analysis of RING domain protein mutants from yeast then led to the subsequent discovery of Tfb3 as a RING domain protein responsible for the neddylation of CULLIN3 and CULLIN4. A clear homolog of TFB3 is not easily discernable in the plant genomes but the identification of TFB3 from yeast *per se* indicates that it cannot be ruled out that besides RBX1 and DNC1 also other NEDD8 ligases exist in plants.

#### MLN4924 – A NEDDYATION INHIBITOR

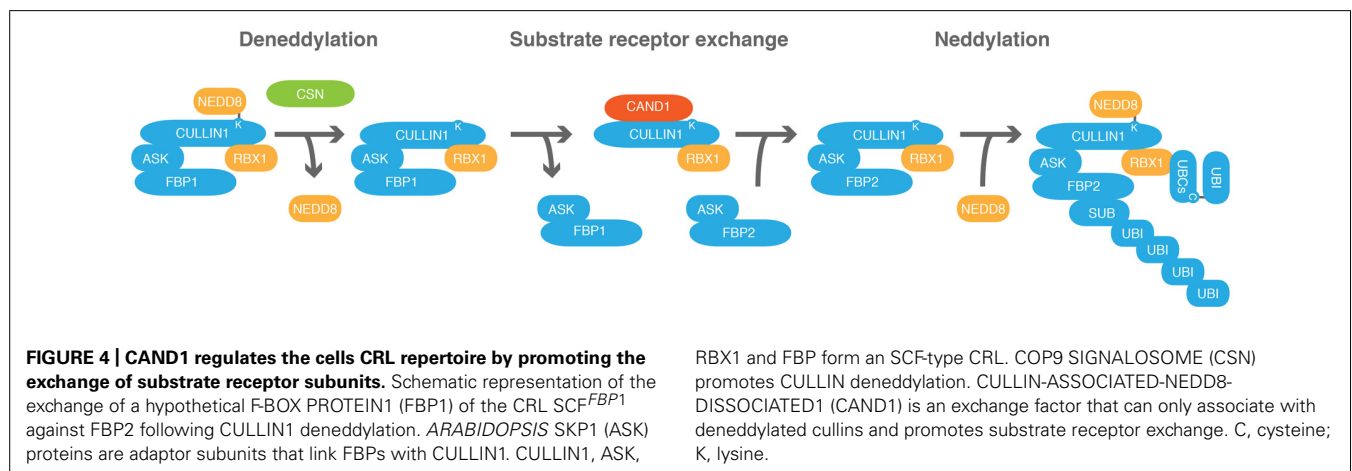
The importance of the NEDD8-modification pathway in the control of plant development has recently been elucidated in a study with the neddylation inhibitor MLN4924 (Hakenjos et al., 2011). MLN4924 was initially described as an inhibitor of the human NAE E1 enzyme but was subsequently found to also inhibit the NAE E1 subunit ECR1 from predictably all plant species (Soucy et al., 2009; Brownell et al., 2010; Hakenjos et al., 2011). MLN4924 inhibits neddylation in plants and the impairment of CRL function results in the degradation of a number of CRL substrates such as the AUX/IAAs of the auxin pathway, DELLA proteins of the gibberellin pathway and the cell cycle regulator KRP1 (Hakenjos et al., 2011). While the severe phenotypes of strong NEDD8 pathway mutants in *Arabidopsis* and the absence of neddylation mutants in other plant species has as yet hampered studying the role of neddylation in all stages of plant development or in non-*Arabidopsis* species, the availability of MLN4924 now overcomes this limitation (Hakenjos et al., 2011).

#### NEDDYATION MUTANTS ARE IMPAIRED IN MANY DIFFERENT CRL FUNCTIONS

As outlined above, AUX/IAA degradation is partially or fully impaired in all mutants of the NEDD8 conjugation pathway and auxin responses are partially or fully blocked in these mutant backgrounds. However, the phenotype of the NEDD8 conjugation mutants is much more complex and not only the consequence of defects in the auxin response pathway. In this regard, it is important to realize that plants predictably have many hundreds of CRLs and that all these CRLs should be impaired in neddylation mutants (Xu et al., 2009). Among these CRLs, SCF<sup>TIR1</sup> and closely related complexes implicated in auxin responses have a very prominent role because defects in the auxin-regulatory CRLs lead to morphological defects that can easily be examined (Dharmasiri et al., 2005a,b). However, while malfunction of SCF<sup>TIR1</sup> and closely related complexes is the most visible phenotype of neddylation mutants, all CRL functions should be affected in *axr1* mutants in a manner similar to the defects observed in the auxin pathway. This fact is sometimes overlooked and particularly *axr1* mutants that were amongst the first auxin response mutants to be identified (Lincoln et al., 1990; Leyser et al., 1993) are often being used as auxin pathway-specific mutants. The knowledge about the existence of many other CRL-dependent pathways, also CRL pathways that affect plant growth and morphology clearly argue against using *axr1* mutants or other neddylation mutants as auxin pathway-specific mutations for morphological analyses or genetic interaction studies (Dill et al., 2004; Shen et al., 2007; Stirnberg et al., 2007; Nelson et al., 2011; Waters and Smith, 2013).

#### CSN PROMOTES CULLIN DENEDDYATION

NEDD8 can be deconjugated from CRLs through the activity of the COP9 signalosome (CSN; **Figure 4**). CSN is evolutionarily conserved and in most species including plant and mammalian species composed of eight subunits (Chamovitz et al., 1996; Seeger et al., 1998; Wei and Deng, 1998). CSN was originally identified in plants based on mutants that display a constitutively photomorphogenic (cop) phenotype and named following the identification of the causative mutation in the *cop9* mutant (Wei and Deng, 1992; Wei et al., 1994). Similarly to



light-grown seedlings, *cop* mutants have a short hypocotyl, open cotyledons, and express light-regulated genes when grown in the dark.

### CSN REPRESSES PHOTOMORPHOGENESIS IN *ARABIDOPSIS*

In *Arabidopsis*, loss-of-function of the eight CSN subunits results in most cases in the destabilization of the entire CSN complex and in a phenotypically indistinguishable *cop* phenotype, marking constitutive photomorphogenesis as a hallmark phenotype for loss of CSN function (Serino et al., 1999, 2003; Dohmann et al., 2005; Gusmaroli et al., 2007). The *cop* phenotype of *csn* mutants can be explained by their inability to degrade photomorphogenesis regulatory transcription factors such as HY5 in dark-grown seedlings through the activity of the E3 ligase COP1 (Osterlund et al., 2000; Chen et al., 2006; Lau and Deng, 2012). COP1 function is impaired in *csn* mutants leading to a stabilization of the COP1 targets also in the dark. In the wildtype, photomorphogenic development during germination is seemingly controlled by the light-controlled nucleocytoplasmic shuttling of COP1 (von Arnim and Deng, 1994; Osterlund et al., 2000; Pacin et al., 2013). In contrast to the strong photomorphogenesis phenotype of *csn* loss-of-function mutants, mutants with partially impaired CSN function display a number of phenotypes, also including auxin insensitive root elongation (Schwechheimer et al., 2001, 2002; Dohmann et al., 2005, 2008b; Stuttmann et al., 2009; Huang et al., 2013b). This phenotypic similarity was indicative for a connection between CSN, the neddylation pathway, and SCF<sup>TIR1</sup>-dependent plant growth regulation when knowledge about the biochemical interplay of these components was still unclear (Schwechheimer et al., 2001).

### CULLIN DENEDDYLATION IS A FUNCTION OF THE MPN+ DOMAIN SUBUNIT CSN5

COP9 signalosome is closely related to the “lid” of the 26S proteasome. In plants and animals, both protein complexes are composed of six so-called PCI domain subunits and two MPN-domain subunits and they share a set of subunit–subunit interactions within the respective complexes (Glickman et al., 1998; Wei et al., 1998; Fu et al., 2001; Enchev et al., 2010; Kotiguda et al., 2012). The relatedness of the two complexes and their in part shared biochemical function are nicely reflected by the fact that a proteasomal “lid” subunit functionally replaces a “missing” CSN subunit in *Saccharomyces cerevisiae* (Yu et al., 2011). CSN as well as the “lid” have two MPN-domain proteins, which can be further subdivided into an MPN+ domain protein with a catalytically active metalloprotease site, and a catalytically inactive MPN-domain protein that must be derived from the MPN+-domain counterpart (Maytal-Kivity et al., 2002). The MPN+ domain subunits CSN5 and RPN11 confer deneddylation and deubiquitylation activity to the CSN and proteasome “lid” complexes, respectively (Cope et al., 2002; Ambroggio et al., 2004). *csn* mutants from *Arabidopsis* are fully impaired in cullin deneddylation and only traces of, presumably *de novo* synthesized, unneddylated cullin can be detected in *csn* mutants. Interestingly, CSN5 is only functional as a cullin deneddylation when associated with CSN. CSN physically interacts with the cullin and RBX1 subunits of CRLs through its subunits CSN2 and CSN6 and it is thought that these interactions provide CSN with the affinity for its CRL targets (Schwechheimer et al., 2001).

Interesting is also the recently identified *csn3-3* allele, which carries a missense mutation in the CSN3 gene. This mutation strongly impairs auxin responses in the mutant but does neither obviously affect cullin deneddylation nor CSN protein complex integrity (Huang et al., 2013a). Thus, the affected domain of CSN3 may be required for an as yet unknown essential CSN function such as CRL subunit interactions or for the ability of the protein or protein complex to engage in other interactions required for normal auxin responses. This is supported by biochemical analyses combined with structural electron microscopy that suggest that CSN2 and CSN5 interact with the cullin E3 ligase subunit whereas F-box substrate receptors interact with CSN1 and CSN3 (Enchev et al., 2012).

Since *csn* mutants are impaired in the function of presumably hundreds of E3 ligases, it is not surprising that additional physiological defects have been identified in these mutants that can be explained by defects in other CRLs and include defects in SCF<sup>COI1</sup>-mediated jasmonate signaling (Schwechheimer et al., 2002; Hind et al., 2011), SCF<sup>SLY1</sup>-mediated gibberellin signaling (Dohmann et al., 2010) as well as defects in cold response (Schwechheimer et al., 2002), cell cycle progression (Dohmann et al., 2008a), and the control of ascorbic acid synthesis (Wang et al., 2013).

### CSN REGULATION AND CSN REGULATORS

In view of the large number of CRLs that exist in eukaryotic cells and the importance of CSN-dependent cullin deneddylation for CRL function, it has to be asked how CRL neddylation and CSN-dependent deneddylation are regulated. In this context, it was shown for different CRLs that the availability of ubiquitylation substrate receptor and ubiquitylation substrate promotes CRL formation and cullin neddylation (Bornstein et al., 2006; Emberley et al., 2012). The association of FBP-SKP1 dimers can inhibit CSN function on selected SCF-complexes several fold (Emberley et al., 2012). Thus, in the case of SCF-complexes cullin neddylation and deneddylation are regulated by the presence of FBP-SKP1 dimers and particularly by the presence of a given FBP, assuming that there is no regulation on the level of the SKP1 adaptor subunit, which does not confer substrate specificity to the SCF complexes. CSN is even more strongly inhibited in the presence of degradation substrate and thus degradation substrate and degradation substrate receptor availability negatively regulate CSN activity (Emberley et al., 2012). Furthermore, CSN associates tightly with deneddylated SCF and CSN thereby keeps the CRL complex in a state of low activity after substrate degradation (Emberley et al., 2012). Through this interaction, CSN also prevents cullin neddylation, unless binding of a ubiquitylation substrate triggers its dissociation and allows for cullin neddylation (Enchev et al., 2012).

In addition to the regulation of CSN by CRLs, their subunits and their substrates, there are also other candidate regulators whose function remains to be determined. The 7 kDa protein SMALL ACIDIC PROTEIN1 (SMAP1) is an interesting CSN-interaction partner (Nakasone et al., 2012). *smap1* mutants were identified as *anti-auxin resistant1* (*aar1*) in a mutant screen that also identified mutants of *TIR1*, *CULLIN1*, and *DCN1-LIKE*. Thus the *aar1/smep1* phenotype may well be explained by a defect



in the E3 ligase SCF<sup>TIR1</sup> or its neddylation or deneddylation. Importantly, immunoprecipitates of SMAP1 are very strongly enriched in at least six CSN subunits, indicating that SMAP1 is a CSN interactor and may regulate CSN function. As yet, the analysis of CULLIN neddylation patterns did not reveal any apparent defects in its neddylation or deneddylation but the *aar3/smap1* mutant phenotype together with the SMAP1-CSN interaction strongly suggests that SMAP1 is linked to CSN function. Since there is not apparent homolog of SMAP1 outside of the plant kingdom, this function should be plant specific.

The analysis of the CSN-interacting Rig-G protein, a protein related to the *Arabidopsis* protein SPINDLY, provided some insights into how interaction partners could interfere with CSN activity. In the case of Rig-G it is proposed that the protein recruits CSN subunits to the cytoplasm and thereby interferes with CSN assembly in the nucleus (Xu et al., 2013).

### CAND1 – A SUBSTRATE RECEPTOR EXCHANGE FACTOR FOR CRLs

Important progress has been achieved in the understanding of the role of neddylation and deneddylation of cullins in the context of CRL assembly and function through analysis of the protein Cullin-associated-Nedd8-dissociated-1 (CAND1). As its name already reveals, CAND1 was identified as an interactor of non-neddylated cullins (Liu et al., 2002; Zheng et al., 2002; Oshikawa et al., 2003). Through a series of elegant experiments from at least three independent laboratories it was recently shown that CAND1 functions as a novel type of exchange factor for CRLs (Pierce et al., 2013; Wu et al., 2013; Zemla et al., 2013). In a highly quantitative and not only therefore remarkable analysis of the diverse protein–protein interactions that can take place between the subunits of SCF-type CRL complexes and CAND1, it could be shown that CAND1 can promote the disassembly of SCF complexes and that FBPs can remove CAND1 from CULLIN1 (Pierce et al., 2013; **Figure 4**). When testing 21 different FBPs it was found that 20 of these could be exchanged using CAND1 as an exchange factor. Thus, in the case of SCF-type CRLs and most likely also in the case of CRLs that are formed with the other cullins, CAND1 can modulate the CRL-complex repertoire of the cell.

CAND1 is unable to interact with neddylated cullins and cullin neddylation stabilizes specific CRLs to prevent substrate receptor exchange (Emberley et al., 2012). Upon cullin deneddylation, CAND1 can become active and modulate the CRL repertoire to optimally match substrate receptor demand. Thus, there must be mechanisms to control CRL deneddylation. Indeed, cullin neddylation and deneddylation are controlled by the presence and absence of degradation substrates or their interactions with substrate receptors (Bornstein et al., 2006; Chew and Hagen, 2007; Emberley et al., 2012). Furthermore, CSN binds preferentially to neddylated CRLs, which may also recruit CSN-associated proteins important for CRL regulation (den Besten et al., 2012). CSN can bind deneddylated cullins but is dissociated in the presence of degradation substrate receptors and degradation substrates (Choo et al., 2011). Consequently, it can be inferred that *csn* as well as *cand1* mutants are deficient in releasing specific substrate receptors. This hypothesis could be experimentally confirmed and it

could be shown that substrate receptor activation and substrate degradation are delayed in such mutant backgrounds (Zemla et al., 2013).

### CAND1 IN PLANTS

In plants, *cand1* mutants were identified and analyzed in reverse and forward genetic screens. Mutants deficient in CAND1 were isolated as auxin-resistant mutants and the mutant spectrum of *cand1* mutants was recognized as being highly similar to, but also to exceed that of *axr1* mutants (Cheng et al., 2004; Chuang et al., 2004; Feng et al., 2004). Three further *cand1* alleles were identified based on mutants with severe defects in leaf vein patterning (Alonso-Peral et al., 2006). In rice, CAND1 is required for the formation of crown roots and defects in crown root formation are associated with a cessation in the G2/M phase progression in these mutants (Wang et al., 2011). In this context it is interesting to note that also *Arabidopsis csn* mutants are defective in G2/M phase progression (Dohmann et al., 2008a).

*Arabidopsis* CAND1 also preferentially binds to non-neddylated cullins (Feng et al., 2004). Importantly, two sets of weak *Arabidopsis* mutants exist, the semi-dominant *axr6-1* and *axr6-2* on the one side and the recessive *cull-6* on the other, carrying missense mutations in almost adjacent positions of CULLIN1. Interestingly, the respective mutant proteins interact differentially with CAND1. While the *cull-6* protein is deficient in CAND1 interaction, *axr6-1* and *axr6-2* bind more strongly to CAND1 (Feng et al., 2004; Moon et al., 2007). The availability of mutants with weak and strong defects in cullin function, cullin deneddylation, and CAND1 interaction has already permitted to assay the biochemical interactions of the various components at the genetic level (Zhang et al., 2008).

### NEDDYLATION SUBSTRATES

#### EVIDENCE FOR NON-CULLIN NEDDYLATION SUBSTRATES

Despite extensive research, the role and importance of neddylation in cellular processes besides the regulation of CRL activity remains poorly understood. Contrary to the expanding knowledge about ubiquitylated proteins in eukaryotes including plants (Kim et al., 2013) similar studies for NEDD8 have so far not succeeded in consistently identifying non-cullin neddylation substrates (Li et al., 2006; Norman and Shiekhhattar, 2006; Jones et al., 2008; Xirodimas, 2008; Bennett et al., 2010; Hakenjos et al., 2011; Hottton et al., 2012). However, there is evidence for the existence of a broad range of neddylation substrates and several non-cullin neddylation substrates have already been identified as summarized in **Table 1**. Loss of function mutants of DEN1/NEDP1/SEN8 from three different species, namely fruit fly, *Schizosaccharomyces pombe* and *Aspergillus nidulans* accumulate neddylation substrates over a broad range of molecular weights. At the same time, these mutants do generally not accumulate neddylation substrates suggesting that DEN1/NEDP1/SEN8 is an important deneddylation enzyme of these non-cullin neddylation substrates (Zhou and Watts, 2005; Chan et al., 2008; Christmann et al., 2013). Also overexpression of NEDD8 leads to the apparent enrichment of many neddylation substrates and this neddylation can be blocked with the inhibitor



**Table 1 | Neddylation substrates.**

Neddylated protein	Proposed function of neddylation	Species	Reference
<b>E3 ubiquitin ligases</b>			
Cullins, Cul7, and PARC	Increases activity	Eukaryotes	Hori et al. (1999), Sarikas et al. (2011), Calabrese et al. (2011)
Mdm2	Decreases activity	Human	Xirodimas et al. (2004)
Parkin	increases activity	Human	Um et al. (2012), Choo et al. (2012)
BRAP2	–	Human	Takashima et al. (2013)
pVHL	Changes pVHL protein interaction	Human	Stickle et al. (2004), Russell and Ohh (2008)
DIAP1/XIAP	-	Fruit fly/human	Broemer et al. (2010)
DDB1	-	<i>Arabidopsis</i>	Hotton et al. (2012)
<b>Transcription factors</b>			
p53	Inhibits transcriptional activity	Human	Xirodimas et al. (2004), Abida et al. (2007)
p73	Inhibits transcriptional activity by sequestering Tap73 to the cytoplasm	Human	Watson et al. (2006)
AICD	Inhibits transcriptional activity	Human	Lee et al. (2008)
E2F1	Inhibits transcriptional activity by blocking protein interaction	Human	Aoki et al. (2012), Loftus et al. (2012)
HIF1 $\alpha$	Stabilizes protein	Human	Ryu et al. (2011)
<b>Transcriptional inhibitors</b>			
BCA3	Activates by promoting protein interaction	Human	Gao et al. (2006)
RCAN1	Stabilizes by inhibiting proteasomal degradation	Human	Noh et al. (2012)
<b>Receptors</b>			
EGFR	Promotes receptor ubiquitylation and ligand induced degradation	Mammals	(Oved et al., 2006)
T $\beta$ RII	Stabilizes protein	Human	(Zuo et al., 2013)
<b>Kinases</b>			
PINK1	Stabilizes the cytosolic protein form	Human	Choo et al. (2012)
CK1 $\alpha$	–	Human	Huart et al. (2012)
<b>Other</b>			
L11, S14, and other ribosomal proteins	Stabilizes the protein	Human	Xirodimas et al. (2008), Zhang et al. (2012)
SHC	–	Human	Jin et al. (2013)
HUR	Stabilizes the protein	Human	Embade et al. (2012)
Histone H4	Induces complex formation and amplifies Ubi cascade	Human	Ma et al. (2013)
driCE/caspase 7	Reduces catalytic activity	Fruit fly/human	Broemer et al. (2010)
Lag2	–	Yeast	Siergiejuk et al. (2009)
ML3	–	<i>Arabidopsis</i>	Hakenjos et al. (2013)

*PARK*, Parkin-like cytoplasmic protein; *Mdm2*, murine double minute 2; *Parkin*, Parkinson juvenile disease protein 2; *BRAP2*, BRCA1-associated protein; *DIAP1*, *Drosophila* inhibitor of apoptosis 1; *XIAP*, X-linked inhibitor of apoptosis protein; *DDB1*, damaged DNA binding protein1; *VHL*, Von Hippel-Lindau disease tumor suppressor; *p53*, cellular tumor antigen p53; *p73*, tumor protein p73; *AICD*, amyloid beta A4 protein; *E2F1*, transcription factor E2F1; *HIF1 $\alpha$* , hypoxia-inducible factor 3- $\alpha$ ; *BCA3*, breast cancer-associated gene 3; *RCAN1*, regulator of calcineurin 1; *EGFR*, epidermal growth factor receptor; *T $\beta$ RII*, transforming growth factor- $\beta$  receptor type II; *PINK1*, PTEN-induced putative kinase protein 1; *CK1 $\alpha$* , casein kinase 1 alpha; *L11*, ribosomal protein L11; *S14*, ribosomal protein S14; *SHC*, Src homology 2 domain-containing-transforming protein C1; *HUR*, Hu-antigen R; *driCE*, *Drosophila* interleukin-1 $\beta$ -converting enzyme; *Lag2*, longevity-assurance protein 2; *ML3*, myeloid differentiation factor-2-related lipid-recognition domain protein 3.

MLN4924 (Hakenjos et al., 2011). Thus, there is evidence that NEDD8-modified proteins other than the cullins can exist but may be low in abundance or only transiently modified under normal conditions.

At the functional level, genetic experiments in *Schizosaccharomyces pombe* showed that the introduction of a specific *cullin1* mutant, which constitutively activates CRLs and therefore renders these CRLs independent from the neddylation machinery, was unable to rescue the phenotype of NEDD8 conjugation mutant *uba3-10* (Girdwood et al., 2011, 2012). This finding may suggest additional biological functions for neddylation that are impaired in *uba3-10* besides the neddylation defect of cullins.

#### IDENTIFICATION OF NEDDYLATION SUBSTRATES - A DIFFICULT ISSUE

A major problem for the identification of new neddylation substrates is the high sequence similarity between NEDD8 and ubiquitin. Both proteins are sequence identical at their C-termini just downstream of a trypsin cleavage site resulting in an identical di-glycine footprint on a modified protein after trypsin digestion for proteomic analyses (Figure 1). Therefore, a di-glycine modification on a lysine of a given peptide cannot unanimously be attributed to either ubiquitin or NEDD8 conjugation.

Ubiquitin and NEDD8 also show a remarkable similarity in their three-dimensional structure and key residues are conserved between the two proteins, most prominently three amino acids (L8, I44, and V70) in the hydrophobic patch that are involved in mediating ubiquitin-protein interactions (Rao-Naik et al., 1998; Whitby et al., 1998; Choi et al., 2009; Girdwood et al., 2011). Thus, a high substrate specificity is required to avoid leakage of ubiquitin or NEDD8 into the respective other modification pathway. Indeed, it has become apparent in the last years that there is a crosstalk between the NEDD8 and ubiquitin conjugation machineries (Hjerpe et al., 2012b; Leidecker et al., 2012; Singh et al., 2012). NEDD8 can be activated by the ubiquitin E1 UBA1 and once activated is conjugated to substrates in a manner similar to ubiquitin (Singh et al., 2012). Inversely, however, NAE specifically activates NEDD8 and does not use ubiquitin as a substrate (Singh et al., 2012). NEDD8 is incorporated in the ubiquitin pathway by UBA1 when the ratio of free NEDD8 to free ubiquitin, which under normal conditions is close to one, shifts toward NEDD8 (Hjerpe et al., 2012a; Leidecker et al., 2012). The leakage of NEDD8 into the ubiquitin pathway leads to the formation of mixed chains with NEDD8 possibly functioning as chain terminator. This mechanism is likely the explanation for the identification of NEDD8 chains in a proteomic study by Jones et al. (2008) using overexpression of a tagged NEDD8 construct. The ability of NEDD8 to form chain linkages is not essential *in vivo* as demonstrated by the viability of a *Schizosaccharomyces pombe* strain carrying a Ned8p mutant construct where all lysine residues that could potentially engage in chain formation were mutated to alanine (Girdwood et al., 2011). Depletion of cellular ubiquitin levels can be caused by knockdown or inhibition of the 26S proteasome but can also have physiological causes such as temperature or oxidative stress (Hjerpe et al., 2012a; Leidecker et al., 2012). While this atypical neddylation has been proposed to act as a stress response to ubiquitin depletion, it is still unclear whether this type of atypical neddylation is

biologically relevant *in vivo* (Hjerpe et al., 2012a; Leidecker et al., 2012).

#### NOVEL NEDDYLATION SUBSTRATES

As outlined above, various studies have led to the identification of novel NEDD8-modified proteins. At the biochemical level, these proteins belong to different protein families including E3 ubiquitin ligases or transcription factors and neddylation has been shown to positively or negatively interfere with their activity (Table 1). Neddylation changes the biochemical properties of its target proteins by inducing conformational changes as well as allowing or precluding protein-protein interactions. Apart from its pleiotropic effects on protein degradation through CRL neddylation, neddylation has a prominent role in cell cycle regulation and cellular stress response pathways in human cells and has also been linked to Alzheimer and Parkinson disease (Table 1). In plants, the only known non-cullin neddylation substrates are DAMAGED DNA BINDING PROTEIN1 (DDB1) and ML3 from *Arabidopsis*. DDB1 is a subunit of a cullin4 E3 ubiquitin ligase and therefore biochemically close to the cells neddylation machinery (Hotton et al., 2012). ML3 is a protein with intriguing cell biological features that plays a role in pathogen responses (Hakenjos et al., 2013). Interestingly, there is also evidence that ML3 has the ability to bind neddylated proteins in a non-covalent manner. Since the precise biochemical function of ML3 remains to be determined, it is at present unclear what role neddylation has in the control of ML3 function.

Given the very recently acquired understanding of the close interplay between ubiquitylation and neddylation, new and old neddylation targets should undergo close scrutiny to ensure that they are genuine targets for NEDD8 modification (Hjerpe et al., 2012b). A catalog of appropriate characterization criteria has been published (Rabut and Peter, 2008).

#### CONCLUSION

In this review, we have summarized the current knowledge of the neddylation pathway in eukaryotes with an emphasis on the role of neddylation in plants. While the enzyme pathway for the conjugation and deconjugation of NEDD8 has been elucidated in plants, findings from other eukaryotic model organisms suggest that there are more, unknown players in this pathway that need to be identified to gain a full understanding of the process and its regulation. Particularly the areas of NEDD8 processing, NEDD8 ligases and the identification of non-cullin NEDD8 substrates will require further detailed investigations in the future. Also the presence of ubiquitin-NEDD8 fusion proteins is unique to plants. The analysis of their processing could bear information that may allow understanding how the highly homologous ubiquitin and NEDD8 proteins were derived from each other during evolution.

#### AUTHOR CONTRIBUTIONS

The authors have contributed in equal parts to the preparation of this manuscript.

#### ACKNOWLEDGMENT

Work on NEDD8 in the authors' laboratory is funded by the Priority Program SPP 1365 of the Deutsche Forschungsgemeinschaft.

## REFERENCES

- Abida, W. M., Nikolaev, A., Zhao, W., Zhang, W., and Gu, W. (2007). FBXO11 promotes the Neddylation of p53 and inhibits its transcriptional activity. *J. Biol. Chem.* 282, 1797–1804. doi: 10.1074/jbc.M609001200
- Alonso-Peral, M. M., Candela, H., Del Pozo, J. C., Martinez-Laborda, A., Ponce, M. R., and Micol, J. L. (2006). The HVE/CAND1 gene is required for the early patterning of leaf venation in *Arabidopsis*. *Development* 133, 3755–3766. doi: 10.1242/dev.02554
- Ambroggio, X. I., Rees, D. C., and Deshaies, R. J. (2004). JAMM: a metalloprotease-like zinc site in the proteasome and signalosome. *PLoS Biol.* 2:e2. doi: 10.1371/journal.pbio.0020002
- Aoki, I., Higuchi, M., and Gotoh, Y. (2012). NEDDylation controls the target specificity of E2F1 and apoptosis induction. *Oncogene* 32, 3954–3964. doi: 10.1038/onc.2012.428
- Bennett, E. J., Rush, J., Gygi, S. P., and Harper, J. W. (2010). Dynamics of cullin-RING ubiquitin ligase network revealed by systematic quantitative proteomics. *Cell* 143, 951–965. doi: 10.1016/j.cell.2010.11.017
- Bernhardt, A., Lechner, E., Hano, P., Schade, V., Dieterle, M., Anders, M., et al. (2006). CUL4 associates with DDB1 and DET1 and its downregulation affects diverse aspects of development in *Arabidopsis thaliana*. *Plant J.* 47, 591–603. doi: 10.1111/j.1365-3113X.2006.02810.x
- Biswas, K. K., Oura, C., Higuchi, K., Miyazaki, Y., Van Nguyen, V., Rahman, A., et al. (2007). Genetic characterization of mutants resistant to the antiauxin p-chlorophenoxyisobutyric acid reveals that AAR3, a gene encoding a DCN1-like protein, regulates responses to the synthetic auxin 2,4-dichlorophenoxyacetic acid in *Arabidopsis* roots. *Plant Physiol.* 145, 773–785. doi: 10.1104/pp.107.104844
- Boh, B. K., Smith, P. G., and Hagen, T. (2011). Neddylation-induced conformational control regulates cullin RING ligase activity in vivo. *J. Mol. Biol.* 409, 136–145. doi: 10.1016/j.jmb.2011.03.023
- Bornstein, G., Ganoth, D., and Hershko, A. (2006). Regulation of neddylation and deneddylation of cullin1 in SCFSkp2 ubiquitin ligase by F-box protein and substrate. *Proc. Natl. Acad. Sci. U.S.A.* 103, 11515–11520. doi: 10.1073/pnas.0603921103
- Bostick, M., Lochhead, S. R., Honda, A., Palmer, S., and Callis, J. (2004). Related to ubiquitin 1 and 2 are redundant and essential and regulate vegetative growth, auxin signaling, and ethylene production in *Arabidopsis*. *Plant Cell* 16, 2418–2432. doi: 10.1105/tpc.104.024943
- Broemer, M., Tenev, T., Rigbolt, K. T., Hempel, S., Blagoev, B., Silke, J., et al. (2010). Systematic in vivo RNAi analysis identifies IAPs as NEDD8-E3 ligases. *Mol. Cell.* 40, 810–822. doi: 10.1016/j.molcel.2010.11.011
- Brownell, J. E., Sintchak, M. D., Gavin, J. M., Liao, H., Bruzzese, F. J., Bump, N. J., et al. (2010). Substrate-assisted inhibition of ubiquitin-like protein-activating enzymes: the NEDD8 E1 inhibitor MLN4924 forms a NEDD8-AMP mimetic in situ. *Mol. Cell.* 37, 102–111. doi: 10.1016/j.molcel.2009.12.024
- Calabrese, M. F., Scott, D. C., Duda, D. M., Grace, C. R., Kurinov, I., Kriwacki, R. W., et al. (2011). A RING E3-substrate complex poised for ubiquitin-like protein transfer: structural insights into cullin-RING ligases. *Nat. Struct. Mol. Biol.* 18, 947–949. doi: 10.1038/nsmb.2086
- Callis, J., Carpenter, T., Sun, C. W., and Vierstra, R. D. (1995). Structure and evolution of genes encoding polyubiquitin and ubiquitin-like proteins in *Arabidopsis thaliana* ecotype Columbia. *Genetics* 139, 921–939.
- Chamovitz, D. A., Wei, N., Osterlund, M. T., Von Arnim, A. G., Staub, J. M., Matsui, M., et al. (1996). The COP9 complex, a novel multisubunit nuclear regulator involved in light control of a plant developmental switch. *Cell* 86, 115–121. doi: 10.1016/S0092-8674(00)80082-3
- Chan, Y., Yoon, J., Wu, J. T., Kim, H. J., Pan, K. T., Yim, J., et al. (2008). DEN1 deneddylates non-cullin proteins in vivo. *J. Cell Sci.* 121, 3218–3223. doi: 10.1242/jcs.030445
- Chen, H., Shen, Y., Tang, X., Yu, L., Wang, J., Guo, L., et al. (2006). *Arabidopsis* CULLIN4 forms an E3 ubiquitin ligase with RBX1 and the CDD complex in mediating light control of development. *Plant Cell* 18, 1991–2004. doi: 10.1105/tpc.106.043224
- Cheng, Y., Dai, X., and Zhao, Y. (2004). AtCAND1, a HEAT-repeat protein that participates in auxin signaling in *Arabidopsis*. *Plant Physiol.* 135, 1020–1026. doi: 10.1104/pp.104.044495
- Chew, E. H., and Hagen, T. (2007). Substrate-mediated regulation of cullin neddylation. *J. Biol. Chem.* 282, 17032–17040. doi: 10.1074/jbc.M701153200
- Choi, Y. S., Jeon, Y. H., Ryu, K. S., and Cheong, C. (2009). 60th residues of ubiquitin and Nedd8 are located out of E2-binding surfaces, but are important for K48 ubiquitin-linkage. *FEBS Lett.* 583, 3323–3328. doi: 10.1016/j.febslet.2009.09.034
- Choo, Y. S., Vogler, G., Wang, D., Kalvakuri, S., Iliuk, A., Tao, W. A., et al. (2012). Regulation of parkin and PINK1 by neddylation. *Hum. Mol. Genet.* 21, 2514–2523. doi: 10.1093/hmg/dd5070
- Choo, Y. Y., Boh, B. K., Lou, J. J., Eng, J., Leck, Y. C., Anders, B., et al. (2011). Characterization of the role of COP9 signalosome in regulating cullin E3 ubiquitin ligase activity. *Mol. Biol. Cell* 22, 4706–4715. doi: 10.1091/mbc.E11-03-0251
- Christmann, M., Schmalzer, T., Gordon, C., Huang, X., Bayram, O., Schinke, J., et al. (2013). Control of multicellular development by the physically interacting deneddylases DEN1/DenA and COP9 signalosome. *PLoS Genet.* 9:e1003275. doi: 10.1371/journal.pgen.1003275
- Chuang, H. W., Zhang, W., and Gray, W. M. (2004). *Arabidopsis* ETA2, an apparent ortholog of the human cullin-interacting protein CAND1, is required for auxin responses mediated by the SCF(TIR1) ubiquitin ligase. *Plant Cell* 16, 1883–1897. doi: 10.1105/tpc.021923
- Cope, G. A., Suh, G. S., Aravind, L., Schwarz, S. E., Zipursky, S. L., Koonin, E. V., et al. (2002). Role of predicted metalloprotease motif of Jab1/Csn5 in cleavage of Nedd8 from Cul1. *Science* 298, 608–611. doi: 10.1126/science.1075901
- del Pozo, J. C., and Estelle, M. (1999). The *Arabidopsis* cullin AtCUL1 is modified by the ubiquitin-related protein RUB1. *Proc. Natl. Acad. Sci. U.S.A.* 96, 15342–15347. doi: 10.1073/pnas.96.26.15342
- del Pozo, J. C., Timpte, C., Tan, S., Callis, J., and Estelle, M. (1998). The ubiquitin-related protein RUB1 and auxin response in *Arabidopsis*. *Science* 280, 1760–1763. doi: 10.1126/science.280.5370.1760
- den Besten, W., Verma, R., Kleiger, G., Oania, R. S., and Deshaies, R. J. (2012). NEDD8 links cullin-RING ubiquitin ligase function to the p97 pathway. *Nat. Struct. Mol. Biol.* 19, 511–516. doi: 10.1038/nsmb.2269
- Dharmasiri, N., Dharmasiri, S., and Estelle, M. (2005a). The F-box protein TIR1 is an auxin receptor. *Nature* 435, 441–445. doi: 10.1038/nature03543
- Dharmasiri, N., Dharmasiri, S., Weijers, D., Lechner, E., Yamada, M., Hobbie, L., et al. (2005b). Plant development is regulated by a family of auxin receptor F box proteins. *Dev. Cell* 9, 109–119. doi: 10.1016/j.devcel.2005.05.014
- Dharmasiri, N., Dharmasiri, S., Weijers, D., Karunarathna, N., Jurgens, G., and Estelle, M. (2007). AXL and AXR1 have redundant functions in RUB conjugation and development in *Arabidopsis*. *Plant J.* 52, 114–123. doi: 10.1111/j.1365-3113X.2007.03211.x
- Dharmasiri, S., Dharmasiri, N., Hellmann, H., and Estelle, M. (2003). The RUB/Nedd8 conjugation pathway is required for early development in *Arabidopsis*. *EMBO J.* 22, 1762–1770. doi: 10.1093/emboj/cdg190
- Dieterle, M., Thomann, A., Renou, J. P., Parmentier, Y., Cognat, V., Lemonnier, G., et al. (2005). Molecular and functional characterization of *Arabidopsis* Cullin 3A. *Plant J.* 41, 386–399. doi: 10.1111/j.1365-3113X.2004.02302.x
- Dill, A., Thomas, S. G., Hu, J., Steber, C. M., and Sun, T. P. (2004). The *Arabidopsis* F-box protein SLEEPY1 targets gibberellin signaling repressors for gibberellin-induced degradation. *Plant Cell* 16, 1392–1405.
- Dohmann, E. M., Kuhnle, C., and Schwechheimer, C. (2005). Loss of the CONSTITUTIVE PHOTOMORPHOGENIC9 signalosome subunit 5 is sufficient to cause the cop/det/fus mutant phenotype in *Arabidopsis*. *Plant Cell* 17, 1967–1978. doi: 10.1105/tpc.105.032870
- Dohmann, E. M., Levesque, M. P., De Veylder, L., Reichardt, I., Jurgens, G., Schmid, M., et al. (2008a). The *Arabidopsis* COP9 signalosome is essential for G2 phase progression and genomic stability. *Development* 135, 2013–2022. doi: 10.1242/dev.020743
- Dohmann, E. M., Levesque, M. P., Isono, E., Schmid, M., and Schwechheimer, C. (2008b). Auxin responses in mutants of the *Arabidopsis* CONSTITUTIVE PHOTOMORPHOGENIC9 signalosome. *Plant Physiol.* 147, 1369–1379. doi: 10.1104/pp.108.121061
- Dohmann, E. M., Nill, C., and Schwechheimer, C. (2010). DELLA proteins restrain germination and elongation growth in *Arabidopsis thaliana* COP9 signalosome mutants. *Eur. J. Cell Biol.* 89, 163–168. doi: 10.1016/j.ejcb.2009.12.001
- Duda, D. M., Borg, L. A., Scott, D. C., Hunt, H. W., Hammel, M., and Schulman, B. A. (2008). Structural insights into NEDD8 activation of cullin-RING ligases: conformational control of conjugation. *Cell* 134, 995–1006. doi: 10.1016/j.cell.2008.07.022

- Embade, N., Fernandez-Ramos, D., Varela-Rey, M., Beraza, N., Sini, M., Gutierrez De Juan, V., et al. (2012). Murine double minute 2 regulates Hu antigen R stability in human liver and colon cancer through NEDDylation. *Hepatology* 55, 1237–1248. doi: 10.1002/hep.24795
- Emberley, E. D., Mosadeghi, R., and Deshaies, R. J. (2012). Deconjugation of Nedd8 from Cul1 is directly regulated by Skp1-F-box and substrate, and the COP9 signalosome inhibits deneddylation of SCF by a noncatalytic mechanism. *J. Biol. Chem.* 287, 29679–29689. doi: 10.1074/jbc.M112.352484
- Enchev, R. I., Schreiber, A., Beuron, F., and Morris, E. P. (2010). Structural insights into the COP9 signalosome and its common architecture with the 26S proteasome lid and eIF3. *Structure* 18, 518–527. doi: 10.1016/j.str.2010.02.008
- Enchev, R. I., Scott, D. C., Da Fonseca, P. C., Schreiber, A., Monda, J. K., Schulman, B. A., et al. (2012). Structural basis for a reciprocal regulation between SCF and CSN. *Cell Rep.* 2, 616–627. doi: 10.1016/j.celrep.2012.08.019
- Esteve-Bruna, D., Perez-Perez, J. M., Ponce, M. R., and Micol, J. L. (2013). incurvata13, a novel allele of AUXIN RESISTANT6, reveals a specific role for auxin and the SCF complex in *Arabidopsis* embryogenesis, vascular specification, and leaf flatness. *Plant Physiol.* 161, 1303–1320. doi: 10.1104/pp.112.207779
- Feng, S., Shen, Y., Sullivan, J. A., Rubio, V., Xiong, Y., Sun, T. P., et al. (2004). *Arabidopsis* CAND1, an unmodified CUL1-interacting protein, is involved in multiple developmental pathways controlled by ubiquitin/proteasome-mediated protein degradation. *Plant Cell* 16, 1870–1882. doi: 10.1105/tpc.021949
- Figueroa, P., Gusmaroli, G., Serino, G., Habashi, J., Ma, L., Shen, Y., et al. (2005). *Arabidopsis* has two redundant Cullin3 proteins that are essential for embryo development and that interact with RBX1 and BTB proteins to form multi-subunit E3 ubiquitin ligase complexes in vivo. *Plant Cell* 17, 1180–1195. doi: 10.1105/tpc.105.031989
- Frickel, E. M., Quesada, V., Muething, L., Gubbels, M. J., Spooner, E., Ploegh, H., et al. (2007). Apicomplexan UCHL3 retains dual specificity for ubiquitin and Nedd8 throughout evolution. *Cell Microbiol.* 9, 1601–1610. doi: 10.1111/j.1462-5822.2007.00896.x
- Fu, H., Reis, N., Lee, Y., Glickman, M. H., and Vierstra, R. D. (2001). Subunit interaction maps for the regulatory particle of the 26S proteasome and the COP9 signalosome. *EMBO J.* 20, 7096–7107. doi: 10.1093/emboj/20.24.7096
- Gan-Erdene, T., Nagamalleswari, K., Yin, L., Wu, K., Pan, Z. Q., and Wilkinson, K. D. (2003). Identification and characterization of DEN1, a deneddyase of the ULP family. *J. Biol. Chem.* 278, 28892–28900. doi: 10.1074/jbc.M302890200
- Gao, F., Cheng, J., Shi, T., and Yeh, E. T. (2006). Neddylation of a breast cancer-associated protein recruits a class III histone deacetylase that represses NFκB-dependent transcription. *Nat. Cell Biol.* 8, 1171–1177. doi: 10.1038/ncb1483
- Gingerich, D. J., Gagne, J. M., Salter, D. W., Hellmann, H., Estelle, M., Ma, L., et al. (2005). Cullins 3a and 3b assemble with members of the broad complex/tramtrack/bric-a-brac (BTB) protein family to form essential ubiquitin-protein ligases (E3s) in *Arabidopsis*. *J. Biol. Chem.* 280, 18810–18821. doi: 10.1074/jbc.M413247200
- Girdwood, D., Robertson, M., and Gordon, C. (2012). Constitutively active Cullin-RING-Ligases fail to rescue loss of NEDD8 conjugation in *Schizosaccharomyces pombe*. *FEBS Lett.* 586, 1522–1528. doi: 10.1016/j.febslet.2012.04.011
- Girdwood, D., Xirodimas, D. P., and Gordon, C. (2011). The essential functions of NEDD8 are mediated via distinct surface regions, and not by polyneddylation in *Schizosaccharomyces pombe*. *PLoS ONE* 6:e20089. doi: 10.1371/journal.pone.0020089
- Glickman, M. H., Rubin, D. M., Coux, O., Wefes, I., Pfeifer, G., Cjeka, Z., et al. (1998). A subcomplex of the proteasome regulatory particle required for ubiquitin-conjugate degradation and related to the COP9-signalosome and eIF3. *Cell* 94, 615–623. doi: 10.1016/S0092-8674(00)81603-7
- Gray, W. M., Hellmann, H., Dharmasiri, S., and Estelle, M. (2002). Role of the *Arabidopsis* RING-H2 protein RBX1 in RUB modification and SCF function. *Plant Cell* 14, 2137–2144. doi: 10.1105/tpc.003178
- Gray, W. M., Kepinski, S., Rouse, D., Leyser, O., and Estelle, M. (2001). Auxin regulates SCF(TIR1)-dependent degradation of AUX/IAA proteins. *Nature* 414, 271–276. doi: 10.1038/35104500
- Gusmaroli, G., Figueroa, P., Serino, G., and Deng, X. W. (2007). Role of the MPN subunits in COP9 signalosome assembly and activity, and their regulatory interaction with *Arabidopsis* Cullin3-based E3 ligases. *Plant Cell* 19, 564–581. doi: 10.1105/tpc.106.047571
- Hakenjos, J. P., Bejai, S., Ranftl, Q., Behringer, C., Vlot, A. C., Absmanner, B., et al. (2013). ML3 is a NEDD8- and ubiquitin-modified protein. *Plant Physiol.* 163, 135–149. doi: 10.1104/pp.113.221341
- Hakenjos, J. P., Richter, R., Dohmann, E. M., Katsiarimpa, A., Isono, E., and Schwechheimer, C. (2011). MLN4924 is an efficient inhibitor of NEDD8 conjugation in plants. *Plant Physiol.* 156, 527–536. doi: 10.1104/pp.111.176677
- Hamann, T., Mayer, U., and Jurgens, G. (1999). The auxin-insensitive bodenlos mutation affects primary root formation and apical-basal patterning in the *Arabidopsis* embryo. *Development* 126, 1387–1395.
- Heir, P., Sufan, R. I., Greer, S. N., Poon, B. P., Lee, J. E., and Ohh, M. (2013). DCNL1 functions as a substrate sensor and activator of cullin 2-RING ligase. *Mol. Cell Biol.* 33, 1621–1631. doi: 10.1128/MCB.01342-12
- Hellmann, H., Hobbie, L., Chapman, A., Dharmasiri, S., Dharmasiri, N., Del Pozo, C., et al. (2003). *Arabidopsis* AXR6 encodes CUL1 implicating SCF E3 ligases in auxin regulation of embryogenesis. *EMBO J.* 22, 3314–3325. doi: 10.1093/emboj/cdg335
- Hemelaar, J., Borodovsky, A., Kessler, B. M., Reverter, D., Cook, J., Kolli, N., et al. (2004). Specific and covalent targeting of conjugating and deconjugating enzymes of ubiquitin-like proteins. *Mol. Cell Biol.* 24, 84–95. doi: 10.1128/MCB.24.1.84-95.2004
- Hind, S. R., Pulliam, S. E., Veronese, P., Shantharaj, D., Nazir, A., Jacobs, N. S., et al. (2011). The COP9 signalosome controls jasmonic acid synthesis and plant responses to herbivory and pathogens. *Plant J.* 65, 480–491. doi: 10.1111/j.1365-3113.2010.04437.x
- Hjerpe, R., Thomas, Y., Chen, J., Zemla, A., Curran, S., Shpiro, N., et al. (2012a). Changes in the ratio of free NEDD8 to ubiquitin triggers NEDDylation by ubiquitin enzymes. *Biochem. J.* 441, 927–936. doi: 10.1042/BJ20111671
- Hjerpe, R., Thomas, Y., and Kurz, T. (2012b). NEDD8 overexpression results in neddylation of ubiquitin substrates by the ubiquitin pathway. *J. Mol. Biol.* 421, 27–29. doi: 10.1016/j.jmb.2012.05.013
- Hobbie, L., Mcgovern, M., Hurwitz, L. R., Pierro, A., Liu, N. Y., Bandyopadhyay, A., et al. (2000). The axr6 mutants of *Arabidopsis thaliana* define a gene involved in auxin response and early development. *Development* 127, 23–32.
- Hori, T., Osaka, F., Chiba, T., Miyamoto, C., Okabayashi, K., Shimbara, N., et al. (1999). Covalent modification of all members of human cullin family proteins by NEDD8. *Oncogene* 18, 6829–6834. doi: 10.1038/sj.onc.1203093
- Hotton, S. K., Castro, M. F., Eigenheer, R. A., and Callis, J. (2012). Recovery of DDB1a (damaged DNA binding protein1a) in a screen to identify novel RUB-modified proteins in *Arabidopsis thaliana*. *Mol. Plant* 5, 1163–1166. doi: 10.1093/mp/sss077
- Hotton, S. K., Eigenheer, R. A., Castro, M. F., Bostick, M., and Callis, J. (2011). AXR1-ECR1 and AXL1-ECR1 heterodimeric RUB-activating enzymes diverge in function in *Arabidopsis thaliana*. *Plant Mol. Biol.* 75, 515–526. doi: 10.1007/s11103-011-9750-8
- Hua, Z., and Vierstra, R. D. (2011). The cullin-RING ubiquitin-protein ligases. *Annu. Rev. Plant Biol.* 62, 299–334. doi: 10.1146/annurev-arplant-042809-112256
- Huang, C. R., Burns, K. H., and Boeke, J. D. (2012). Active transposition in genomes. *Annu. Rev. Genet.* 46, 651–675. doi: 10.1146/annurev-genet-110711-155616
- Huang, H., Quint, M., and Gray, W. M. (2013a). The eta7/csn3-3 auxin response mutant of *Arabidopsis* defines a novel function for the CSN3 subunit of the COP9 signalosome. *PLoS ONE* 8:e66578. doi: 10.1371/journal.pone.0066578
- Huang, X., Ouyang, X., Yang, P., Lau, O. S., Chen, L., Wei, N., et al. (2013b). Conversion from CUL4-based COP1-SPA E3 apparatus to UVR8-COP1-SPA complexes underlies a distinct biochemical function of COP1 under UV-B. *Proc. Natl. Acad. Sci. U.S.A.* 110, 16669–16674. doi: 10.1073/pnas.1316622110
- Huart, A. S., MacLaine, N. J., Narayan, V., and Hupp, T. R. (2012). Exploiting the MDM2-CK1α protein-protein interface to develop novel biologics that induce UBL-kinase-modification and inhibit cell growth. *PLoS ONE* 7:e43391. doi: 10.1371/journal.pone.0043391
- Jentsch, S., and Pyrowolakis, G. (2000). Ubiquitin and its kin: how close are the family ties? *Trends Cell Biol.* 10, 335–342. doi: 10.1016/S0962-8924(00)01785-2
- Jin, H. S., Liao, L., Park, Y., and Liu, Y. C. (2013). Neddylation pathway regulates T-cell function by targeting an adaptor protein Shc and a protein kinase Erk signaling. *Proc. Natl. Acad. Sci. U.S.A.* 110, 624–629. doi: 10.1073/pnas.1213819110
- Johnston, S. C., Riddle, S. M., Cohen, R. E., and Hill, C. P. (1999). Structural basis for the specificity of ubiquitin C-terminal hydrolases. *EMBO J.* 18, 3877–3887. doi: 10.1093/emboj/18.14.3877



- Jones, D., and Candido, E. P. (2000). The NED-8 conjugating system in *Caenorhabditis elegans* is required for embryogenesis and terminal differentiation of the hypodermis. *Dev. Biol.* 226, 152–165. doi: 10.1006/dbio.2000.9847
- Jones, D. T., Taylor, W. R., and Thornton, J. M. (1992). The rapid generation of mutation data matrices from protein sequences. *Comp. Appl. Biosci.* 8, 275–282.
- Jones, J., Wu, K., Yang, Y., Guerrero, C., Nillegoda, N., Pan, Z. Q., et al. (2008). A targeted proteomic analysis of the ubiquitin-like modifier nedd8 and associated proteins. *J. Proteome Res.* 7, 1274–1287. doi: 10.1021/pr700749v
- Kim, D. Y., Scalf, M., Smith, L. M., and Vierstra, R. D. (2013). Advanced proteomic analyses yield a deep catalog of ubiquitylation targets in *Arabidopsis*. *Plant Cell* 25, 1523–1540. doi: 10.1105/tpc.112.108613
- Kotiguda, G. G., Weinberg, D., Dessau, M., Salvi, C., Serino, G., Chamovitz, D. A., et al. (2012). The organization of a CSN5-containing subcomplex of the COP9 signalosome. *J. Biol. Chem.* 287, 42031–42041. doi: 10.1074/jbc.M112.387977
- Kumar, S., Yoshida, Y., and Noda, M. (1993). Cloning of a cDNA which encodes a novel ubiquitin-like protein. *Biochem. Biophys. Res. Commun.* 195, 393–399. doi: 10.1006/bbrc.1993.2056
- Kurihara, L. J., Semenova, E., Leverage, J. M., and Tilghman, S. M. (2000). Expression and functional analysis of Uch-L3 during mouse development. *Mol. Cell. Biol.* 20, 2498–2504. doi: 10.1128/MCB.20.7.2498-2504.2000
- Kurz, T., Chou, Y. C., Willems, A. R., Meyer-Schaller, N., Hecht, M. L., Tyers, M., et al. (2008). Dcn1 functions as a scaffold-type E3 ligase for cullin neddylation. *Mol. Cell.* 29, 23–35. doi: 10.1016/j.molcel.2007.12.012
- Kurz, T., Ozlu, N., Rudolf, F., O'Rourke, S. M., Luke, B., Hofmann, K., et al. (2005). The conserved protein DCN-1/Dcn1p is required for cullin neddylation in *C. elegans* and *S. cerevisiae*. *Nature* 435, 1257–1261. doi: 10.1038/nature03662
- Lammer, D., Mathias, N., Laplaza, J. M., Jiang, W., Liu, Y., Callis, J., et al. (1998). Modification of yeast Cdc53p by the ubiquitin-related protein rub1p affects function of the SCFCdc4 complex. *Genes Dev.* 12, 914–926. doi: 10.1101/gad.12.7.914
- Lau, O. S., and Deng, X. W. (2012). The photomorphogenic repressors COP1 and DET1: 20 years later. *Trends Plant Sci.* 17, 584–593. doi: 10.1016/j.tplants.2012.05.004
- Lechner, E., Xie, D., Grava, S., Pigaglio, E., Planchais, S., Murray, J. A., et al. (2002). The AtRbx1 protein is part of plant SCF complexes, and its down-regulation causes severe growth and developmental defects. *J. Biol. Chem.* 277, 50069–50080. doi: 10.1074/jbc.M204254200
- Lee, M. R., Lee, D., Shin, S. K., Kim, Y. H., and Choi, C. Y. (2008). Inhibition of AP1 intracellular domain (AICD) transcriptional activity via covalent conjugation with Nedd8. *Biochem. Biophys. Res. Commun.* 366, 976–981. doi: 10.1016/j.bbrc.2007.12.066
- Leidecker, O., Matic, I., Mahata, B., Pion, E., and Xirodimas, D. P. (2012). The ubiquitin E1 enzyme Ube1 mediates NEDD8 activation under diverse stress conditions. *Cell Cycle* 11, 1142–1150. doi: 10.4161/cc.11.6.19559
- Leyser, H. M., Lincoln, C. A., Timpte, C., Lammer, D., Turner, J., and Estelle, M. (1993). *Arabidopsis* auxin-resistance gene AXR1 encodes a protein related to ubiquitin-activating enzyme E1. *Nature* 364, 161–164. doi: 10.1038/364161a0
- Li, T., Santockyte, R., Shen, R. F., Tekle, E., Wang, G., Yang, D. C., et al. (2006). A general approach for investigating enzymatic pathways and substrates for ubiquitin-like modifiers. *Arch. Biochem. Biophys.* 453, 70–74. doi: 10.1016/j.abb.2006.03.002
- Liakopoulos, D., Busgen, T., Brychzy, A., Jentsch, S., and Pause, A. (1999). Conjugation of the ubiquitin-like protein NEDD8 to cullin-2 is linked to von Hippel-Lindau tumor suppressor function. *Proc. Natl. Acad. Sci. U.S.A.* 96, 5510–5515. doi: 10.1073/pnas.96.10.5510
- Lincoln, C. R., Britton, J. H., and Estelle, M. (1990). Growth and development of the axr1 mutants of *Arabidopsis*. *Plant Cell* 2, 1071–1080. doi: 10.1105/tpc.2.11.1071
- Linghu, B., Callis, J., and Goebel, M. G. (2002). Rub1p processing by Yuh1p is required for wild-type levels of Rub1p conjugation to Cdc53p. *Eukaryot. Cell* 1, 491–494. doi: 10.1128/EC.1.3.491-494.2002
- Liu, J., Furukawa, M., Matsumoto, T., and Xiong, Y. (2002). NEDD8 modification of CUL1 dissociates p120(CAND1), an inhibitor of CUL1-SKP1 binding and SCF ligases. *Mol. Cell.* 10, 1511–1518. doi: 10.1016/S1097-2765(02)00783-9
- Loftus, S. J., Liu, G., Carr, S. M., Munro, S., and La Thangue, N. B. (2012). NEDDylation regulates E2F-1-dependent transcription. *EMBO Rep.* 13, 811–818. doi: 10.1038/embor.2012.113
- Ma, T., Chen, Y., Zhang, F., Yang, C. Y., Wang, S., and Yu, X. (2013). RNF111-dependent neddylation activates DNA damage-induced ubiquitination. *Mol. Cell.* 49, 897–907. doi: 10.1016/j.molcel.2013.01.006
- Maytal-Kivity, V., Pick, E., Piran, R., Hofmann, K., and Glickman, M. H. (2003). The COP9 signalosome-like complex in *S. cerevisiae* and links to other PCI complexes. *Int. J. Biochem. Cell Biol.* 35, 706–715. doi: 10.1016/S1357-2725(02)00378-3
- Maytal-Kivity, V., Reis, N., Hofmann, K., and Glickman, M. H. (2002). MPN+, a putative catalytic motif found in a subset of MPN domain proteins from eukaryotes and prokaryotes, is critical for Rpn11 function. *BMC Biochem.* 3:28. doi: 10.1186/1471-2091-3-28
- Mendoza, H. M., Shen, L. N., Botting, C., Lewis, A., Chen, J., Ink, B., et al. (2003). NEDP1, a highly conserved cysteine protease that deNEDDylates Cullins. *J. Biol. Chem.* 278, 25637–25643. doi: 10.1074/jbc.M212948200
- Meyer-Schaller, N., Chou, Y. C., Sumara, I., Martin, D. D., Kurz, T., Katheder, N., et al. (2009). The human Dcn1-like protein DCN13 promotes Cul3 neddylation at membranes. *Proc. Natl. Acad. Sci. U.S.A.* 106, 12365–12370. doi: 10.1073/pnas.0812528106
- Moon, J., Zhao, Y., Dai, X., Zhang, W., Gray, W. M., Huq, E., et al. (2007). A new CULLIN 1 mutant has altered responses to hormones and light in *Arabidopsis*. *Plant Physiol.* 143, 684–696. doi: 10.1104/pp.106.091439
- Morimoto, M., Nishida, T., Nagayama, Y., and Yasuda, H. (2003). Nedd8-modification of Cull1 is promoted by Roc1 as a Nedd8-E3 ligase and regulates its stability. *Biochem. Biophys. Res. Commun.* 301, 392–398. doi: 10.1016/S0006-291X(02)03051-6
- Nakasone, A., Fujiwara, M., Fukao, Y., Biswas, K. K., Rahman, A., Kawai-Yamada, M., et al. (2012). SMALL ACIDIC PROTEIN1 acts with RUB modification components, the COP9 signalosome, and AXR1 to regulate growth and development of *Arabidopsis*. *Plant Physiol.* 160, 93–105. doi: 10.1104/pp.111.188409
- Nelson, D. C., Scaffidi, A., Dun, E. A., Waters, M. T., Flematti, G. R., Dixon, K. W., et al. (2011). F-box protein MAX2 has dual roles in karrikin and strigolactone signaling in *Arabidopsis thaliana*. *Proc. Natl. Acad. Sci. U.S.A.* 108, 8897–8902. doi: 10.1073/pnas.1100987108
- Noh, E. H., Hwang, H. S., Hwang, H. S., Min, B., Im, E., and Chung, K. C. (2012). Covalent NEDD8 conjugation increases RCAN1 protein stability and potentiates its inhibitory action on calcineurin. *PLoS ONE* 7:e48315. doi: 10.1371/journal.pone.0048315
- Norman, J. A., and Shiekhhattar, R. (2006). Analysis of Nedd8-associated polypeptides: a model for deciphering the pathway for ubiquitin-like modifications. *Biochemistry* 45, 3014–3019. doi: 10.1021/bi052435a
- O'Donoghue, J. E., Bech-Otschir, D., Larsen, I. B., Wallace, M., Hartmann-Petersen, R., and Gordon, C. (2013). Nedd8 processing enzymes in *Schizosaccharomyces pombe*. *BMC Biochem.* 14:8. doi: 10.1186/1471-2091-14-8
- Osaka, F., Saeki, M., Katayama, S., Aida, N., Toh, E. A., Kominami, K., et al. (2000). Covalent modifier NEDD8 is essential for SCF ubiquitin-ligase in fission yeast. *EMBO J.* 19, 3475–3484. doi: 10.1093/emboj/19.13.3475
- Oshikawa, K., Matsumoto, M., Yada, M., Kamura, T., Hatakeyama, S., and Nakayama, K. I. (2003). Preferential interaction of TIP120A with Cull1 that is not modified by NEDD8 and not associated with Skp1. *Biochem. Biophys. Res. Commun.* 303, 1209–1216. doi: 10.1016/S0006-291X(03)00501-1
- Osterlund, M. T., Hardtke, C. S., Wei, N., and Deng, X. W. (2000). Targeted destabilization of HY5 during light-regulated development of *Arabidopsis*. *Nature* 405, 462–466. doi: 10.1038/35013076
- Ou, C. Y., Lin, Y. F., Chen, Y. J., and Chien, C. T. (2002). Distinct protein degradation mechanisms mediated by Cull1 and Cul3 controlling Ci stability in *Drosophila* eye development. *Genes Dev.* 16, 2403–2414. doi: 10.1101/gad.1011402
- Oved, S., Mosesson, Y., Zwang, Y., Santonic, E., Shtiegman, K., Marmor, M. D., et al. (2006). Conjugation to Nedd8 investigates ubiquitylation and down-regulation of activated receptor tyrosine kinases. *J. Biol. Chem.* 281, 21640–21651. doi: 10.1074/jbc.M513034200
- Pacin, M., Legris, M., and Casal, J. J. (2013). COP1 re-accumulates in the nucleus under shade. *Plant J.* 75, 631–641. doi: 10.1111/tpj.12226
- Pacurar, D. I., Pacurar, M. L., Street, N., Bussell, J. D., Pop, T. I., Gutierrez, L., et al. (2012). A collection of INDEL markers for map-based cloning in seven *Arabidopsis* accessions. *J. Exp. Bot.* 63, 2491–2501. doi: 10.1093/jxb/err422
- Pierce, N. W., Lee, J. E., Liu, X., Sweredoski, M. J., Graham, R. L., Larimore, E. A., et al. (2013). Cand1 promotes assembly of new SCF complexes through dynamic exchange of F box proteins. *Cell* 153, 206–215. doi: 10.1016/j.cell.2013.02.024

- Quint, M., Ito, H., Zhang, W., and Gray, W. M. (2005). Characterization of a novel temperature-sensitive allele of the CUL1/AXR6 subunit of SCF ubiquitin-ligases. *Plant J.* 43, 371–383. doi: 10.1111/j.1365-313X.2005.02449.x
- Rabut, G., Le Dez, G., Verma, R., Makhnevych, T., Knebel, A., Kurz, T., et al. (2011). The TFIH subunit Tfb3 regulates cullin neddylation. *Mol. Cell.* 43, 488–495. doi: 10.1016/j.molcel.2011.05.032
- Rabut, G., and Peter, M. (2008). Function and regulation of protein neddylation. 'Protein modifications: beyond the usual suspects' review series. *EMBO Rep.* 9, 969–976. doi: 10.1038/embor.2008.183
- Rao-Naik, C., Delacruz, W., Laplaza, J. M., Tan, S., Callis, J., and Fisher, A. J. (1998). The rub family of ubiquitin-like proteins. Crystal structure of Arabidopsis rub1 and expression of multiple rubs in Arabidopsis. *J. Biol. Chem.* 273, 34976–34982. doi: 10.1074/jbc.273.52.34976
- Ruegger, M., Dewey, E., Gray, W. M., Hobbie, L., Turner, J., and Estelle, M. (1998). The TIR1 protein of Arabidopsis functions in auxin response and is related to human SKP2 and yeast grr1p. *Genes Dev.* 12, 198–207. doi: 10.1101/gad.12.2.198
- Russell, R. C., and Ohh, M. (2008). NEDD8 acts as a 'molecular switch' defining the functional selectivity of VHL. *EMBO Rep.* 9, 486–491. doi: 10.1038/embor.2008.19
- Ryu, J. H., Li, S. H., Park, H. S., Park, J. W., Lee, B., and Chun, Y. S. (2011). Hypoxia-inducible factor alpha subunit stabilization by NEDD8 conjugation is reactive oxygen species-dependent. *J. Biol. Chem.* 286, 6963–6970. doi: 10.1074/jbc.M110.188706
- Sarikas, A., Hartmann, T., and Pan, Z. Q. (2011). The cullin protein family. *Genome Biol.* 12, 220. doi: 10.1186/gb-2011-12-4-220
- Schwechheimer, C., Serino, G., Callis, J., Crosby, W. L., Lyapina, S., Deshaies, R. J., et al. (2001). Interactions of the COP9 signalosome with the E3 ubiquitin ligase SCFTIR1 in mediating auxin response. *Science* 292, 1379–1382. doi: 10.1126/science.1059776
- Schwechheimer, C., Serino, G., and Deng, X. W. (2002). Multiple ubiquitin ligase-mediated processes require COP9 signalosome and AXR1 function. *Plant Cell* 14, 2553–2563. doi: 10.1105/tpc.003434
- Scott, D. C., Monda, J. K., Bennett, E. J., Harper, J. W., and Schulman, B. A. (2011). N-terminal acetylation acts as an avidity enhancer within an interconnected multiprotein complex. *Science* 334, 674–678. doi: 10.1126/science.1209307
- Scott, D. C., Monda, J. K., Grace, C. R., Duda, D. M., Kriwacki, R. W., Kurz, T., et al. (2010). A dual E3 mechanism for Rub1 ligand to Cdc53. *Mol. Cell.* 39, 784–796. doi: 10.1016/j.molcel.2010.08.030
- Seeger, M., Kraft, R., Ferrell, K., Bech-Otschir, D., Dumdey, R., Schade, R., et al. (1998). A novel protein complex involved in signal transduction possessing similarities to 26S proteasome subunits. *FASEB J.* 12, 469–478.
- Serino, G., Su, H., Peng, Z., Tsuge, T., Wei, N., Gu, H., et al. (2003). Characterization of the last subunit of the Arabidopsis COP9 signalosome: implications for the overall structure and origin of the complex. *Plant Cell* 15, 719–731. doi: 10.1105/tpc.009092
- Serino, G., Tsuge, T., Kwok, S., Matsui, M., Wei, N., and Deng, X. W. (1999). Arabidopsis cop8 and fus4 mutations define the same gene that encodes subunit 4 of the COP9 signalosome. *Plant Cell* 11, 1967–1980.
- Shen, H., Luong, P., and Huq, E. (2007). The F-box protein MAX2 functions as a positive regulator of photomorphogenesis in Arabidopsis. *Plant Physiol.* 145, 1471–1483. doi: 10.1104/pp.107.107227
- Shen, L. N., Liu, H., Dong, C., Xirodimas, D., Naismith, J. H., and Hay, R. T. (2005). Structural basis of NEDD8 ubiquitin discrimination by the deNEDDylating enzyme NEDP1. *EMBO J.* 24, 1341–1351. doi: 10.1038/sj.emboj.7600628
- Shen, W. H., Parmentier, Y., Hellmann, H., Lechner, E., Dong, A., Masson, J., et al. (2002). Null mutation of AtCUL1 causes arrest in early embryogenesis in Arabidopsis. *Mol. Biol. Cell* 13, 1916–1928. doi: 10.1091/mbc.E02-02-0077
- Shin, Y. C., Tang, S. J., Chen, J. H., Liao, P. H., and Chang, S. C. (2011). The molecular determinants of NEDD8 specific recognition by human SENP8. *PLoS ONE* 6:e27742. doi: 10.1371/journal.pone.0027742
- Siergiejuk, E., Scott, D. C., Schulman, B. A., Hofmann, K., Kurz, T., and Peter, M. (2009). Cullin neddylation and substrate-adaptors counteract SCF inhibition by the CAND1-like protein Lag2 in Saccharomyces cerevisiae. *EMBO J.* 28, 3845–3856. doi: 10.1038/emboj.2009.354
- Singh, R. K., Zerath, S., Kleifeld, O., Scheffner, M., Glickman, M. H., and Fushman, D. (2012). Recognition and cleavage of related to ubiquitin 1 (Rub1) and Rub1-ubiquitin chains by components of the ubiquitin-proteasome system. *Mol. Cell. Proteomics* 11, 1595–1611. doi: 10.1074/mcp.M112.022467
- Soucy, T. A., Smith, P. G., Milhollen, M. A., Berger, A. J., Gavin, J. M., Adhikari, S., et al. (2009). An inhibitor of NEDD8-activating enzyme as a new approach to treat cancer. *Nature* 458, 732–736. doi: 10.1038/nature07884
- Stickle, N. H., Chung, J., Klco, J. M., Hill, R. P., Kaelin, W. G. Jr., and Ohn, M. (2004). pVHL modification by NEDD8 is required for fibronectin matrix assembly and suppression of tumor development. *Mol. Cell. Biol.* 24, 3251–3261. doi: 10.1128/MCB.24.8.3251-3261.2004
- Stirnberg, P., Furner, I. J., and Ottoline Leyser, H. M. (2007). MAX2 participates in an SCF complex which acts locally at the node to suppress shoot branching. *Plant J.* 50, 80–94. doi: 10.1111/j.1365-313X.2007.03032.x
- Stuttman, J., Lechner, E., Guerois, R., Parker, J. E., Nussaume, L., Genschik, P., et al. (2009). COP9 signalosome- and 26S proteasome-dependent regulation of SCFTIR1 accumulation in Arabidopsis. *J. Biol. Chem.* 284, 7920–7930. doi: 10.1074/jbc.M809069200
- Takashima, O., Tsuruta, F., Kigoshi, Y., Nakamura, S., Kim, J., Katoh, M. C., et al. (2013). Brap2 regulates temporal control of NF-kappaB localization mediated by inflammatory response. *PLoS ONE* 8:e58911. doi: 10.1371/journal.pone.0058911
- Tamura, K., Peterson, D., Peterson, N., Stecher, G., Nei, M., and Kumar, S. (2011). MEGA5: molecular evolutionary genetics analysis using maximum likelihood, evolutionary distance, and maximum parsimony methods. *Mol. Biol. Evol.* 28, 2731–2739. doi: 10.1093/molbev/msr121
- Tan, X., Calderon-Villalobos, L. I., Sharon, M., Zheng, C., Robinson, C. V., Estelle, M., et al. (2007). Mechanism of auxin perception by the TIR1 ubiquitin ligase. *Nature* 446, 640–645. doi: 10.1038/nature05731
- Tateishi, K., Omata, M., Tanaka, K., and Chiba, T. (2001). The NEDD8 system is essential for cell cycle progression and morphogenetic pathway in mice. *J. Cell Biol.* 155, 571–579. doi: 10.1083/jcb.200104035
- Um, J. W., Han, K. A., Im, E., Oh, Y., Lee, K., and Chung, K. C. (2012). Neddylation positively regulates the ubiquitin E3 ligase activity of parkin. *J. Neurosci. Res.* 90, 1030–1042. doi: 10.1002/jnr.22828
- Vierstra, R. D. (2012). The expanding universe of ubiquitin and ubiquitin-like modifiers. *Plant Physiol.* 160, 2–14. doi: 10.1104/pp.112.200667
- Vierstra, R. D., and Callis, J. (1999). Polypeptide tags, ubiquitous modifiers for plant protein regulation. *Plant Mol. Biol.* 41, 435–442. doi: 10.1023/A:1006323317890
- von Arnim, A. G., and Deng, X. W. (1994). Light inactivation of Arabidopsis photomorphogenic repressor COP1 involves a cell-specific regulation of its nucleocytoplasmic partitioning. *Cell* 79, 1035–1045. doi: 10.1016/0092-8674(94)90034-5
- Wada, H., Kito, K., Caskey, L. S., Yeh, E. T., and Kamitani, T. (1998). Cleavage of the C-terminus of NEDD8 by UCH-L3. *Biochem. Biophys. Res. Commun.* 251, 688–692. doi: 10.1006/bbrc.1998.9532
- Wang, J., Yu, Y., Zhang, Z., Quan, R., Zhang, H., Ma, L., et al. (2013). Arabidopsis CSN5B interacts with VTC1 and modulates ascorbic acid synthesis. *Plant Cell* 25, 625–636. doi: 10.1105/tpc.112.106880
- Wang, X. F., He, F. F., Ma, X. X., Mao, C. Z., Hodgman, C., Lu, C. G., et al. (2011). OsCAND1 is required for crown root emergence in rice. *Mol. Plant* 4, 289–299. doi: 10.1093/mp/ssp068
- Waters, M. T., and Smith, S. M. (2013). KAI2- and MAX2-mediated responses to karrikins and strigolactones are largely independent of HY5 in Arabidopsis seedlings. *Mol. Plant* 6, 63–75. doi: 10.1093/mp/sss127
- Watson, I. R., Blanch, A., Lin, D. C., Ohh, M., and Irwin, M. S. (2006). Mdm2-mediated NEDD8 modification of Tap73 regulates its transactivation function. *J. Biol. Chem.* 281, 34096–34103. doi: 10.1074/jbc.M603654200
- Wei, N., Chamovitz, D. A., and Deng, X. W. (1994). Arabidopsis COP9 is a component of a novel signaling complex mediating light control of development. *Cell* 78, 117–124. doi: 10.1016/0092-8674(94)90578-9
- Wei, N., and Deng, X. W. (1992). COP9: a new genetic locus involved in light-regulated development and gene expression in Arabidopsis. *Plant Cell* 4, 1507–1518. doi: 10.1105/tpc.4.12.1507
- Wei, N., and Deng, X. W. (1998). Characterization and purification of the mammalian COP9 complex, a conserved nuclear regulator initially identified as a repressor of photomorphogenesis in higher plants. *Photochem. Photobiol.* 68, 237–241. doi: 10.1111/j.1751-1097.1998.tb02495.x

- Wei, N., Tsuge, T., Serino, G., Dohmae, N., Takio, K., Matsui, M., et al. (1998). The COP9 complex is conserved between plants and mammals and is related to the 26S proteasome regulatory complex. *Curr. Biol.* 8, 919–922. doi: 10.1016/S0960-9822(07)00372-7
- Weijers, D., Benkova, E., Jager, K. E., Schlereth, A., Hamann, T., Kientz, M., et al. (2005). Developmental specificity of auxin response by pairs of ARF and Aux/IAA transcriptional regulators. *EMBO J.* 24, 1874–1885. doi: 10.1038/sj.emboj.7600659
- Whitby, F. G., Xia, G., Pickart, C. M., and Hill, C. P. (1998). Crystal structure of the human ubiquitin-like protein NEDD8 and interactions with ubiquitin pathway enzymes. *J. Biol. Chem.* 273, 34983–34991.
- Woodward, A. W., Ratzel, S. E., Woodward, E. E., Shamooy, Y., and Bartel, B. (2007). Mutation of E1-CONJUGATING ENZYME-RELATED1 decreases RELATED TO UBIQUITIN conjugation and alters auxin response and development. *Plant Physiol.* 144, 976–987. doi: 10.1104/pp.107.100404
- Wu, K., Yamoah, K., Dolios, G., Gan-Erdene, T., Tan, P., Chen, A., et al. (2003). DEN1 is a dual function protease capable of processing the C terminus of Nedd8 and deconjugating hyper-neddylated CUL1. *J. Biol. Chem.* 278, 28882–28891. doi: 10.1074/jbc.M302888200
- Wu, S., Zhu, W., Nhan, T., Toth, J. I., Petroski, M. D., and Wolf, D. A. (2013). CAND1 controls in vivo dynamics of the cullin 1-RING ubiquitin ligase repertoire. *Nat. Commun.* 4, 1642. doi: 10.1038/ncomms2636
- Xirodimas, D. P. (2008). Novel substrates and functions for the ubiquitin-like molecule NEDD8. *Biochem. Soc. Trans.* 36, 802–806. doi: 10.1042/BST0360802
- Xirodimas, D. P., Saville, M. K., Bourdon, J. C., Hay, R. T., and Lane, D. P. (2004). Mdm2-mediated NEDD8 conjugation of p53 inhibits its transcriptional activity. *Cell* 118, 83–97. doi: 10.1016/j.cell.2004.06.016
- Xirodimas, D. P., Sundqvist, A., Nakamura, A., Shen, L., Botting, C., and Hay, R. T. (2008). Ribosomal proteins are targets for the NEDD8 pathway. *EMBO Rep.* 9, 280–286. doi: 10.1038/embor.2008.10
- Xu, G., Ma, H., Nei, M., and Kong, H. (2009). Evolution of F-box genes in plants: different modes of sequence divergence and their relationships with functional diversification. *Proc. Natl. Acad. Sci. U.S.A.* 106, 835–840. doi: 10.1073/pnas.0812043106
- Xu, G. P., Zhang, Z. L., Xiao, S., Zhuang, L. K., Xia, D., Zou, Q. P., et al. (2013). Rig-G negatively regulates SCF-E3 ligase activities by disrupting the assembly of COP9 signalosome complex. *Biochem. Biophys. Res. Commun.* 432, 425–430. doi: 10.1016/j.bbrc.2013.01.132
- Yang, P., Smalle, J., Lee, S., Yan, N., Emborg, T. J., and Vierstra, R. D. (2007). Ubiquitin C-terminal hydrolases 1 and 2 affect shoot architecture in *Arabidopsis*. *Plant J.* 51, 441–457. doi: 10.1111/j.1365-313X.2007.03154.x
- Yu, H. A., Kim, S. G., Kim, E. J., Lee, W. J., Kim, D. O., Park, K., et al. (2007). Characterization of ubiquitin C-terminal hydrolase 1 (YUH1) from *Saccharomyces cerevisiae* expressed in recombinant *Escherichia coli*. *Protein Exp. Purif.* 56, 20–26. doi: 10.1016/j.pep.2007.07.005
- Yu, Z., Kleifeld, O., Lande-Atir, A., Bsoul, M., Kleiman, M., Krutauz, D., et al. (2011). Dual function of Rpn5 in two PCI complexes, the 26S proteasome and COP9 signalosome. *Mol. Biol. Cell* 22, 911–920. doi: 10.1091/mbc.E10-08-0655
- Zemla, A., Thomas, Y., Kedziora, S., Knebel, A., Wood, N. T., Rabut, G., et al. (2013). CSN- and CAND1-dependent remodelling of the budding yeast SCF complex. *Nat. Commun.* 4, 1641. doi: 10.1038/ncomms2628
- Zhang, J., Bai, D., Ma, X., Guan, J., and Zheng, X. (2012). hCINAP is a novel regulator of ribosomal protein-HDM2-p53 pathway by controlling NEDDylation of ribosomal protein S14. *Oncogene* 33, 246–254. doi: 10.1038/nc.2012.560
- Zhang, W., Ito, H., Quint, M., Huang, H., Noel, L. D., and Gray, W. M. (2008). Genetic analysis of CAND1-CUL1 interactions in *Arabidopsis* supports a role for CAND1-mediated cycling of the SCFTIR1 complex. *Proc. Natl. Acad. Sci. U.S.A.* 105, 8470–8475. doi: 10.1073/pnas.0804144105
- Zheng, J., Yang, X., Harrell, J. M., Ryzhikov, S., Shim, E. H., Lykke-Andersen, K., et al. (2002). CAND1 binds to unneddylated CUL1 and regulates the formation of SCF ubiquitin E3 ligase complex. *Mol. Cell.* 10, 1519–1526. doi: 10.1016/S1097-2765(02)00784-0
- Zhou, L., and Watts, F. Z. (2005). Nep1, a *Schizosaccharomyces pombe* deneddylating enzyme. *Biochem. J.* 389, 307–314. doi: 10.1042/BJ20041991
- Zuo, W., Huang, F., Chiang, Y. J., Li, M., Du, J., Ding, Y., et al. (2013). c-Cbl-mediated neddylation antagonizes ubiquitination and degradation of the TGF-beta type II receptor. *Mol. Cell* 49, 499–510. doi: 10.1016/j.molcel.2012.12.002

**Conflict of Interest Statement:** The authors declare that the research was conducted in the absence of any commercial or financial relationships that could be construed as a potential conflict of interest.

Received: 18 January 2014; paper pending published: 17 February 2014; accepted: 03 March 2014; published online: 21 March 2014.

Citation: Mergner J and Schwechheimer C (2014) The NEDD8 modification pathway in plants. *Front. Plant Sci.* 5:103. doi: 10.3389/fpls.2014.00103

This article was submitted to *Plant Genetics and Genomics*, a section of the journal *Frontiers in Plant Science*.

Copyright © 2014 Mergner and Schwechheimer. This is an open-access article distributed under the terms of the Creative Commons Attribution License (CC BY). The use, distribution or reproduction in other forums is permitted, provided the original author(s) or licensor are credited and that the original publication in this journal is cited, in accordance with accepted academic practice. No use, distribution or reproduction is permitted which does not comply with these terms.