

Published in:

Food Chemistry, 157 (2014) 439-447

The final publication is available at Elsevier via <https://doi.org/10.1016/j.foodchem.2014.02.054>

3

4

5 **Mechanisms of folate losses during processing: diffusion vs. heat degradation.**

6

7 Nicolas Delchier<sup>a,b</sup>; Christiane Ringling<sup>c</sup>; Jean-François Maingonnat<sup>a,b</sup>; Michael Rychlik<sup>c,d</sup>;

8 Catherine M.G.C. Renard<sup>a,b,\*</sup>.

9

10 <sup>a</sup> INRA, UMR408 Sécurité et Qualité des Produits d'Origine Végétale, Domaine Saint Paul,

11 Site Agroparc, F-84000 Avignon, France.

12 <sup>b</sup> Université d'Avignon et des Pays du Vaucluse, UMR408 Sécurité et Qualité des Produits

13 d'Origine Végétale, F-84000 Avignon, France.

14 <sup>c</sup> Bioanalytik Weihenstephan, Research Center of Nutrition and Food Sciences, Technische

15 Universität München, Alte Akademie 10, D-85354, Freising, Germany.

16 <sup>d</sup> Chair of Analytical Food Chemistry, Technical University of Munich, Alte Akademie 10, D-

17 85354, Freising, Germany.

18

19 \* Corresponding author: [nicolas.delchier@gmail.com](mailto:nicolas.delchier@gmail.com)

20 INRA – UMR 408 SQPOV

21 Domaine St Paul, Site Agroparc

22 F-84000 Avignon, FRANCE

23 Phone: +33 (0)4.32.72.25.28 Fax: +33 (0)4.32.72.24.92



24

25 © 2014. This manuscript version is made available under the CC-BY-NC-ND 4.0 license

26 <http://creativecommons.org/licenses/by-nc-nd/4.0/>

27

28 **Highlights:**

29 **1.** pH and temperature have no effect on folate diffusivity constant

30 **2.** Vegetable matrices have effect on diffusivity constant

31 **3.** Folate stability during thermal treatment depend on their nature

32

33 **Abstract:**

34 Though folates are sensitive to heat treatments, leaching appears to be a major mechanism  
35 involved in folate losses in vegetables during processing.

36 The aim of our study was to study conjointly folate diffusivity and degradation from spinach  
37 and green beans, in order to determine the proportion of each mechanism involved in folate  
38 losses.

39 Folate diffusivity constant, calculated according to Fick's second law (Crank, 1975), was  
40  $7.4 \times 10^{-12}$  m<sup>2</sup>/s for spinach and  $5.8 \times 10^{-10}$  m<sup>2</sup>/s for green beans, which is the same order of  
41 magnitude as for sugars and acids for each vegetable considered. Folate thermal degradation  
42 kinetics was not monotonous in spinach and green beans especially at 45 °C and did not follow  
43 a first order reaction. The proportion of vitamers changed markedly after thermal treatment,  
44 with a better retention of formyl derivatives. For spinach, folate losses were mainly due to  
45 diffusion while for green beans thermal degradation seemed to be preponderant.

46

47

48

49 **Keywords:**

50 Vitamins; folate; vegetables; process; leaching; heat degradation; kinetics; Fick's second law

51

52 **Introduction**

53 Folate is the generic term used for different water-soluble vitamins which differ by the nature  
54 of carbon groups linked to nitrogen 5 or 10, the oxidative state and the length of the glutamate  
55 tail. They are involved in the “one carbon metabolism” especially being donor of methyl group  
56 during DNA synthesis. It is well established that folates can protect against neural tube defects  
57 (Czeizel & Dudás, 1992) and neurodegenerative diseases (Snowdon, Tully, Smith, Riley &  
58 Markesbery, 2000). Folates are also involved in the methylation of homocysteine, which is one  
59 risk factor for heart diseases (Robinson, 2000).

60 One of the main contributors for folate intake are vegetables and particularly green vegetables,  
61 which represent circa 40 % of the folate intake in the French diet (Lafay, 2009). In France,  
62 authorities recommend an intake of folate from 300 µg per day for women to 330 µg per day  
63 for men, with an increase to 1 mg per day during pregnancy (ANSES). However, there is a gap  
64 between the real and the recommended intake from around 20 % for women to 15 % for men  
65 (Lafay, 2009).

66 Evolution of lifestyles means that most of fruits and vegetables are consumed after processing,  
67 whether domestic processing (cooking, heating, microwaves) or industrial processing such as  
68 canning or freezing, hence there is a need to better understand the impact of processing on  
69 folate content.

70 Folate losses from spinach during boiling or blanching represent 20 to 80 % of initial folates  
71 and from 0 to 20 % in green beans (Klein, Lee, Reynolds & Wangles, 1979; Desouza &  
72 Eitenmiller, 1986; McKillop et al., 2002; Melse Boonstra et al., 2002; Delchier, Reich &  
73 Renard, 2012). However steaming and microwave cooking did not cause folate losses (Klein et  
74 al., 1979; McKillop et al., 2002; Delchier et al., 2012). Few studies measured folates in cooking  
75 liquids but Delchier et al. (2012) showed that leached folates represent half of folate losses  
76 from fresh spinach and the whole of folates losses from frozen spinach and green beans, after

77 boiling in water. Data concerning the impact of industrial processing on folate losses is really  
78 scarce. Our previous study showed that blanching had no effect on folate losses both during  
79 spinach freezing process and green beans canning process. Losses occur during the washing  
80 step for spinach and after sterilization for green beans, with folate found in the covering liquid  
81 (Delchier et al., 2013).

82 These study on folate loss during industrial processing led us to suspect that diffusion may play  
83 a major role in folate loss, especially when heating steps are limited.

84 Therefore this study aims to determine the relative importance of diffusion and thermal  
85 degradation during spinach and green beans heat treatments. For this, two parallel experiments  
86 were set up: one in which vegetables were only subjected to heat, and one in which they were  
87 subjected to heat and diffusion.

88

89 **2. Material and methods**

90 **2.1. Plant material**

91 **2.1.1. Diffusion**

92 Fresh spinach and green beans were bought at a local supermarket on the day of the  
93 experiments or stored at 4 °C for maximum of 48 h after purchase. Spinach and green beans  
94 were first blanched in phosphate buffer pH 7 (0.01 mol/L) or in citrate phosphate buffer pH 5  
95 (0.01 mol/L) for 10 min at 100 °C with solid-liquid ratio of 50 g/L and 100 g/L respectively, in  
96 order to inactivate enzymes and destroy cell compartmentalization. After blanching, spinach  
97 and green beans were drained, weighted and immediately put into a large receptacle (with the  
98 same solid-liquid ratio of 50 g/L), to start the diffusion.

99

100 **2.1.2. Thermal degradation**

101 Purees were prepared from spinach and green beans stored in cans bought at local supermarket  
102 in two batches for each temperature condition. Cans were opened and vegetables were drained.  
103 200 g of vegetables were put into 400 mL of water and ground with an UltraTurax (S25 18G,  
104 IKA, Staufen, Germany) at 13,000 rpm for 1 min. Spinach purees were diluted, for facilitating  
105 stirring during time course. For this purpose, 50 ml of water was added to 50 mL of spinach  
106 puree.

107

108 **2.2. Time course experiments**

109 **2.2.1. Diffusion**

110 Diffusions experiments were carried out in phosphate buffer pH 7 (0.01 mol/L) or citrate  
111 phosphate buffer pH 5 (0.01 mol/L), under stirring. Temperature and pH were monitored and  
112 controlled all along the time course, which were performed for three temperatures (25, 45 and

113 65 °C) and at pH 5 and pH 7 during 4 h. At pH 7, three batches of spinach and green beans  
114 were independently studied and two batches at pH 5.

115 For each kinetic point, an aliquot of 35 g of spinach or green beans was collected and directly  
116 stabilized by freezing in liquid nitrogen, and stored at - 80 °C until analysis. The folate content  
117 was determined in the vegetables at each point along the time course.

118

### 119 **2.2.2. Thermal degradation**

120 Heat degradation was carried out in a beaker immersed in a water bath. Purees were stirred all  
121 along the experiments by a propeller stirrer of 55 mm diameter turning at 600 rpm (VOS 16,  
122 VWR, Fontenay sous bois, France). Time courses were performed in two independent batches  
123 for three temperatures: 45, 65 and 85 °C. Purees were heated and kinetics started when they  
124 were at the desired temperature. 10 mL of puree were sampled at different points during 4 h  
125 and directly put at -80 °C.

126

## 127 **2.3. Modelling**

### 128 **2.3.1. Diffusion**

129 Diffusivity constant ( $D$ ) was calculated for folates, sugars and acids according to Fick's second  
130 law (Equation 1):

$$131 \frac{\partial C}{\partial t} = -D \frac{\partial^2 C}{\partial r^2} \quad (1)$$

132 Where  $C$  represents the concentration,  $t$  the time and  $r$  a characteristic distance.

133 Spinach leaves were considered as a plane sheet where Fick's second law solution, given by

134 Crank (1975), is (Equation 2):

$$135 \quad \frac{C(t) - C_{\infty}}{C_0 - C_{\infty}} = 1 - \sum_{n=0}^{\infty} \frac{8}{(2n+1)^2 \pi^2} \exp\left(-\frac{D(2n+1)^2 \pi^2 t}{4l^2}\right) \quad (2)$$

136 Where  $C(t)$  is the concentration at time  $t$ ,  $C_0$  is the initial concentration and  $C_{\infty}$  the  
 137 concentration at infinite time,  $D$  the diffusivity constant and  $l$  the half thickness of the plane.

138 In case of green beans, diffusivity constant was determined according to the cylinder solution  
 139 given by Crank (1975) (Equation 3):

$$140 \quad \frac{C(t) - C_{\infty}}{C_0 - C_{\infty}} = 1 - \sum_{n=1}^{\infty} \frac{4}{a^2 \alpha_n^2} \exp(-D \alpha_n^2 t) \quad (3)$$

141 Where  $C(t)$  is the folates concentration at  $t$  time,  $C_0$  is the initial concentration and  $C_{\infty}$  the  
 142 concentration at infinite time,  $D$  the diffusivity constant and  $a$  the radius. In this equation  $\alpha_n$  is  
 143 the root of Bessel function of order 0 (Equation 4).

$$144 \quad J_0(a \alpha_n) = 0 \quad (4)$$

145 The model was adjusted by maximizing the correlation coefficient  $r^2$  calculated as follow  
 146 (Equation 5):

$$147 \quad r^2 = 1 - \left( \frac{\sum (Exp - Th)^2}{\sum (Exp - m_{Th})^2} \right) \quad (5)$$

148 Where  $Exp$  is the experimental concentration;  $Th$  is the theoretical data obtained by modelling,  
 149 and  $m_{Th}$  is the mean of theoretical data obtained by modelling.

150

### 151 **2.3.2. Thermal degradation**

152 Linearization of folate thermal degradation was carried out according to the mean of the two  
 153 batches for each temperature studied, using a first order with partial conversion model, as  
 154 described below (Equation 6):

155 
$$\ln\left(\frac{C}{C_0}\right) = -kt \quad (6)$$

156 Where  $C$  is the folate concentration,  $C_0$  is the initial folate concentration,  $k$  is the degradation  
157 rate constant and  $t$  the time.

158

## 159 **2.3. Analytical procedures**

### 160 **2.3.1. Folate measurement**

#### 161 **2.3.1.1. Total folates content**

162 Total folate content was determined by HPLC with fluorimetric detection. After extraction all  
163 folate vitamers were deconjugated into mono and diglutamate, reduced and methylated into 5-  
164 CH<sub>3</sub>-H<sub>4</sub>folates. The latter were purified from the extract by affinity chromatography using  
165 Folate Binding Protein, and quantified by RP-HPLC with fluorimetric detection (RF-1AXL,  
166 Shimadzu inc., Kyoto, Japan). For experimental details, see Delchier et al. (2013).

167

#### 168 **2.3.1.2. Stable isotope dilution assay**

169 Before extraction, labelled standards of folate vitamers were added and all folates were  
170 deconjugated into their monoglutamate forms. Vitamers were purified on SPE SAX cartridges  
171 after adding acetonitrile (10 mL) and centrifugation. Folate analysis was carried out on an  
172 HPLC (Shimadzu inc., Kyoto, Japan) coupled with a triple quadrupole mass spectrometer (API  
173 4000 Q-Trap, AB-Sciex, Foster City, CA, USA). A Pro-C18 HPLC-column (150 x 3, 3 μm,  
174 130 Å, YMC, Japan) with water plus 0.1 % (v/v) formic acid (A) and acetonitrile plus 0.1 %  
175 (v/v) formic acid (B) as mobile phases was used. The gradient started at 5 % B. After a linear  
176 increase to 10 % B in 5 min and holding this condition for 5 min, another linear increase to



177 15 % B during 10 min and to 50 % B in 2 min, which was maintained for 2 min. Within 2 min  
178 B was decreased linearly to 5 % and the column was equilibrated for 9 min.  
179 Concentration of the single vitamins in the food samples was calculated using the response  
180 factors reported recently (Ringling & Rychlik, 2013). For more experimental details see  
181 Ringling & Rychlik (2013).

182

### 183 **2.3.2. Acid and sugar measurement**

184 Acid and sugar concentrations were determined by spectrophotometry (Xenius, Safas, Monaco)  
185 by determining concentrations of NADPH and NADH respectively, at 340 nm using enzymatic  
186 kits. Enzymatic kits for citric acid (reference: 10.139.076), for malic acid (reference:  
187 10.139.068), for glucose (reference: 10.716.251), for fructose (reference: 10.139.106) and for  
188 sucrose (reference: 10.716.251) were obtained from R-Biopharm (Darmstadt, Germany).

189 Sugars and acids were extracted from 200 mg of spinach or green beans powder, to which  
190 1 mL of deionised water was added. The mix was stirred for 1 min and then centrifuged  
191 (Bioblock Scientific 1K15, Illkirch, France) for 10 min at 7400 g at 4 °C. 5 µL of supernatant  
192 were pipetted into the microplate. 250 µL of enzymatic reagents were added.

193 The concentrations were determined against external calibration from 0 to 1 g/L for citric and  
194 malic acids, from 0 to 2 g/L for fructose and glucose and from 0 to 4 g/L for sucrose.

195

196

## 197 **3. Results**

### 198 **3.1. Thermal degradation**

199 In spinach, for each temperature the folate concentration decreased over time, with appearance  
200 of a plateau at 120 min at 45 °C, 60 min at 65 °C and 30 min at 85 °C (Fig. 1). However, this  
201 decrease was not monotonous, concentration increased particularly between 10 and 20 min at  
202 45 °C. For each temperature, the difference in concentrations between the two batches was  
203 relatively low. For all temperatures, degradation of the folates under study was not complete, a  
204 plateau was reached with  $C_{\infty}/C_0$  ratio of 40 % at 45 °C, 42 % at 65 °C and 48 % at 85 °C.

205 In green beans, evolution of folate concentrations at 45 °C showed an increase in the first 20  
206 min, which was more marked for batch 2, followed by a decrease until reaching a plateau at  
207 120 min (Fig. 1). At higher temperatures the concentration decrease was monotonous, except at  
208 60 min, and 65 °C, for the two independent kinetics. This decrease reached a plateau at 90 min  
209 for the two batches at 65 °C and at 20 min for the two batches at 85 °C. Variability between  
210 batches for each temperature was low. Overall, temperature accelerated folate degradation, the  
211 plateau being reached more rapidly at 85 °C than at 65 °C or 45 °C. However, folates  
212 degradation was not complete; the level of the  $C_{\infty}/C_0$  ratio was 20 % both at 45 °C and 65 °C.  
213 Folate thermal degradation kinetics were modeled using first order with partial conversion.  
214 However, this model was not satisfying at 45 °C, where the folate concentration increased in  
215 the first minutes of the kinetics.

216

### 217 **3.2. Folate losses during diffusion**

#### 218 **3.2.1. Total folate**

219 Total folate concentration was determined in vegetables by HPLC with fluorimetric detection  
220 after precolumn derivatization, and expressed as 5-CH<sub>3</sub>-H<sub>4</sub>folate in mg/kg of fresh weight.

221 For spinach, the folate concentration at the beginning of the experiments, for both pH and the  
222 three temperatures studied, varied slightly between different batches. In all conditions, the  
223 folate concentration first decreased rapidly over time. This decrease was exponential until  
224 reaching a plateau after 60 min (data not shown). For green beans, the folate concentration at  
225 the beginning of the diffusion time course was the same (about 0.2 mg/kg expressed in fresh  
226 material) for both pH and temperatures studied. The decrease in folate concentration was much  
227 more dependent on temperature. Thus, at pH 5 and 25 °C the folate content was almost stable.  
228 However, it decreased at 45 °C and more markedly at 65 °C. Folate decrease appeared to be  
229 exponential until reaching a plateau at 120 min, at least at 65 °C (data not shown).

230 The decrease in folate was faster for spinach than for green beans at the beginning of the time  
231 course. The plateau was also reached faster for spinach than for green beans with a higher level  
232 for green beans than for spinach. Indeed, the residual ratio in spinach (Table 1), expressed by  
233 the ratio  $C_{\infty}/C_0$  at the plateau, was on average 26 % of the initial concentration at pH 7 and in  
234 the same order of magnitude at pH 5. At pH 7, temperature had no effect on residual ratio while  
235 at pH 5 temperature had an effect especially at 65 °C. For green beans, the residual ratios  
236 ( $C_{\infty}/C_0$ ) were on average 62 % of the initial concentration at pH 7 and 72 % of the initial  
237 concentration at pH 5 (Table 1). Temperature seemed to have an effect on the residual ratio  
238 both at pH 7 (from 0.7 at 25 °C to 0.41 at 65 °C) and at pH 5 (from 1.17 at 25 °C to 0.43 at 65  
239 °C).

240 Finally, the folate residual ratios ( $C_{\infty}/C_0$ ) were lower than those observed during the thermal  
241 degradation studies (40 % at 45 °C and 42 % at 65 °C), for spinach at pH 5. For green beans,  
242 these residual ratios were higher than those observed in thermal degradation at pH 5 (20 % at  
243 45 °C and 65 °C), the pH corresponding to that of spinach and green beans purees used during  
244 thermal degradation kinetics.

245

246 **3.2.2. Folate derivatives**

247 Concentrations of folate derivatives in mg/kg as fresh weight, in the initial sample and in the  
248 final sample of the diffusion kinetic studies were determined by stable isotope dilution assays.  
249 Results are presented in Table 2 for spinach and Table 3 for green beans.

250 Both in spinach and green beans, the main compound was 5-CH<sub>3</sub>-H<sub>4</sub>folate which represented  
251 about 70 % of folates at the beginning of diffusion and also revealed the highest loss of all  
252 derivatives during diffusion. At pH 7, 5-CH<sub>3</sub>-H<sub>4</sub>folate residual ratios ( $C_{\infty}/C_0$ ) in spinach  
253 decreased with increasing temperature. The same trend was observed with higher residual ratio  
254 ( $C_{\infty}/C_0$ ) at pH 5. For green beans, 5-CH<sub>3</sub>-H<sub>4</sub>folate residual ratio ( $C_{\infty}/C_0$ ) decreased with  
255 temperature increase at pH 7 and pH 5.

256 The second main class of folates derivatives was formyl derivatives. 10-HCO-PteGlu and 5-  
257 HCO-H<sub>4</sub>folate represented 6 to 16 % in spinach and 7 to 12 % in green beans respectively. 5-  
258 HCO-H<sub>4</sub>folate residual ratios ( $C_{\infty}/C_0$ ) increased with the temperature increase both in spinach  
259 and green beans between pH 7 and pH 5. 10-HCO-PteGlu residual ratios ( $C_{\infty}/C_0$ ) were quite  
260 stable at 25 °C both at pH 7 and 5 while it increased with rising temperature both at pH 7 and 5.  
261 Residual ratios ( $C_{\infty}/C_0$ ) of minor derivatives (PteGlu, H<sub>4</sub>folate, 5,10-CH<sup>+</sup>-H<sub>4</sub>folate and  
262 10-HCO-H<sub>2</sub>folate) were very low and appeared quite variable during kinetics, both for spinach  
263 and green beans.

264 Finally,  $C_{\infty}/C_0$  obtained by determining concentrations by HPLC with fluorimetric detection  
265 were globally higher than those obtained by the sum of concentrations of derivatives (as folic  
266 acid) by stable dilution assay, especially at 65 °C and pH 7. Analytical imprecision could be  
267 involved in this variation, especially by an over expression of concentrations resulting from the  
268 sample preparation for HPLC with fluorimetric detection.

269

### 270 3.3. Diffusion modelling

271 Modelling of experimental data was carried out according to Fick's second law for two  
272 reasons:

273 - Fick's second law is usually applied for describing of diffusion phenomena of water soluble  
274 compounds.

275 - The evolution of concentrations in the vegetables along the time course, with an exponential  
276 initial decrease followed by a plateau corresponding to Fick's second law model both for plate  
277 (with an average thickness of spinach leaves of  $2.74 \pm 0.8 \times 10^{-4}$  m) and cylinder (with an  
278 average green beans diameter of  $6.66 \pm 1.36 \times 10^{-3}$  m).

279 The modeling was performed in the same way for all conditions of pH and temperature studied,  
280 both for folate, sugar and acid diffusion from spinach and green beans. An example is  
281 presented in Fig. 2, diffusion of folates for spinach at pH 7 and 45 °C (A) and for green beans  
282 at pH 7 and 65 °C (B), where lozenges represent experimental data and the line represents the  
283 diffusion model.

284 Model fitting was satisfactory both for spinach and green beans where the exponential shape  
285 curve was in accordance with experimental data (Fig. 2). In order to validate the model,  
286 correlation coefficients were maximized, both for spinach and green beans. The correlation  
287 coefficients considering folate diffusion were between 0.87 and 0.99 for spinach and between  
288 0.77 and 0.99 for green beans. For sugars and acids, the correlation coefficients varied from  
289 0.82 to 0.99 for spinach and from 0.93 to 0.99 for green beans.

290 The high level of the correlation coefficients and the correlation between experimental data and  
291 model show an adequacy between the model calculated and the phenomena observed both for  
292 folates, sugars and acids in spinach and green beans.

293

### 294 3.3.1. Sugars and acids

295 Acids and sugars are water-soluble molecules and stable at pH 5 and 7 and temperatures, from  
296 25 °C to 65 °C, which were the conditions used in our study.

297 For spinach, only glucose and malic acid presented a sufficient initial concentration for relevant  
298 model fitting. Therefore, the diffusivity constant was calculated in spinach only for these two  
299 substances. The concentration of glucose and malic acid in spinach decreased until a plateau at  
300 about 60 min. Both for glucose and malic acid, temperature and pH did not have an effect on  
301 residual ratios.

302 For both pH and temperature the concentration in sugars and green beans decreased in green  
303 beans until reaching a plateau at about 120 min. Plateau levels ( $C_{\infty}/C_0$ ) decreased with  
304 temperature at pH 7, and between 25 and 45 °C at pH 5, for glucose (Table 1). The residual  
305 ratio ( $C_{\infty}/C_0$ ) for fructose decreased with temperature both at pH 7 and 5 while sucrose residual  
306 ratio appeared stable. There was an effect of temperature on the reduction of the residual ratio  
307 ( $C_{\infty}/C_0$ ) of malic acid. In addition, it appeared that residual ratios ( $C_{\infty}/C_0$ ) of malic acid were  
308 higher at pH 5 than at pH 7 and at 45 and at 65 °C.

309 Both for spinach and green beans, diffusion of sugars and acids was determined as the mean of  
310 three batches for pH 7 and two batches for pH 5 for the three temperatures studied.

311 For spinach, the diffusivity constant determined was on average  $5.5 \times 10^{-12}$  m<sup>2</sup>/s both for sugars  
312 and acids (Table 1). Glucose, fructose and sucrose from green beans showed a similar  
313 diffusivity constant, therefore only glucose, the most abundant compound, is presented. The  
314 temperature and pH did not seem to have any influence on the rate of diffusion of sugars in  
315 green bean, which was on average  $6.1 \times 10^{-10}$  m<sup>2</sup>/s

316 Diffusion of acids (citric and malic acids) from green beans showed diffusivity constants of the  
317 same order for both acids at all temperatures and pH, on average about  $4.6 \times 10^{-10}$  m<sup>2</sup>/s (Table

318 1). However, plateau levels were very different. Citric acid was almost completely extracted  
319 while malic acid was still present in green beans. The temperature and pH did not seem to have  
320 any effect on the rate of diffusion for the two acids studied. However, the diffusivity constant  
321 of citric acid was higher than that of malic acid and the diffusion was faster for citric acid than  
322 for malic acid.

323

### 324 **3.3.2. Folates**

325 Folate diffusion took place in the first 60 min for spinach and 120 min for green beans, until  
326 reaching a plateau after 60 min for spinach and 120 min for green beans. Correlation  
327 coefficients exceeded 0.9 both for spinach and green beans. Results are presented in Table 1.

328 Folate diffusivity constants averaged at  $7.45 \times 10^{-12}$  m<sup>2</sup>/s for spinach and  $5.86 \times 10^{-10}$  m<sup>2</sup>/s for  
329 green beans. For green beans, the folate diffusivity constant was hundred times higher than for  
330 spinach meaning that the diffusion of folates is faster for green beans than for spinach. For  
331 spinach, neither temperature nor pH had an effect on the folate diffusivity constant. For green  
332 beans, the folate diffusivity constant appeared variable between batches for the same  
333 conditions. Indeed, the low slope of folate concentration decrease did not allow distinguishing  
334 a significant effect of pH or temperature on folate diffusivity constant.

335 The diffusivity constants calculated for folates both from spinach and green beans were in the  
336 same order of magnitude than those calculated for acids and sugars from the same matrix.

## 337 **4. Discussion**

338 Our study was carried out at three temperatures (25, 45 and 65 °C), two of which were  
339 sufficient to allow thermal degradation of folates over the time scale used (45 and 65 °C). For  
340 diffusion kinetics, incubation at 85 °C proved to be impossible as the vegetables disintegrated  
341 over the time-course.

342

#### 343 **4.1. Diffusion of water soluble compounds**

344 We could not follow folate, sugar and acid diffusion at 85°C because of the matrix instability at  
345 this temperature. Indeed, at 85 °C for 4 hours, spinach and green beans would have been  
346 completely disintegrated.

347 Overall, little data are currently available concerning water soluble molecule diffusion from  
348 plant tissues. The few studies available concern acid and sugar diffusion.

349 Vukov & Monszpart Senyi (1977) have determined diffusivity constants of sugars and acids  
350 from apple slice to water at 75 °C as  $11.8 \times 10^{-10}$  m<sup>2</sup>/s for sugars and  $14.2 \times 10^{-10}$  m<sup>2</sup>/s for acids.

351 Some experiments quantified diffusivity constants of glucose and sucrose from alginate gels to  
352 water, which are  $2.55 \times 10^{-10}$  at 5 °C for glucose and from  $2.85 \times 10^{-10}$  m<sup>2</sup>/s to  $4.13 \times 10^{-10}$  m<sup>2</sup>/s at  
353 5 °C to 20 °C, for sucrose. From agar gels to water diffusivity constants are in the same range  
354 of magnitude at  $2.47 \times 10^{-10}$  m<sup>2</sup>/s at 5 °C (Friedman & Kraemer, 1930). Moreover, Schwartzberg  
355 & Chao (1982), determined diffusivity constants of glucose, fructose and sucrose to water at 25  
356 °C from  $0.69 \times 10^{-9}$  to  $0.54 \times 10^{-9}$  m<sup>2</sup>/s.

357 Diffusivity constants calculated for acids and sugars in our study were in the range of  $10^{-11}$  m<sup>2</sup>/s  
358 from spinach and  $10^{-10}$  m<sup>2</sup>/s from green beans. From green beans, the constant we found is in  
359 agreement with those found in the literature for green beans (Friedman & Kraemer, 1930;  
360 Vukov & Monszpart Senyi, 1977; Schwartzberg & Chao, 1982). In contrast, diffusivity  
361 constants from spinach calculated in our study are lower than those found in the literature.  
362 However, the diffusivity constants of sugars and acids were calculated from alginate, agar gels  
363 or apple slices. These matrixes are different from those we studied, particularly the  
364 physiological barriers such as the cuticles which could explain the difference observed for  
365 spinach. For folates, currently no data are available in literature. The diffusivity constant



366 calculated for folates are in the same order of magnitude as those calculated for sugars and  
367 acids, with the same difference between the two matrices.

368 The system we have developed to study the diffusion of water-soluble molecules such as  
369 sugars, acids and folates from spinach and green beans appear to be efficient.

370

#### 371 **4.2. Impact of pH and temperature**

372 Diffusivity constants calculated for folates from spinach and green beans, both at pH 7 and pH  
373 5, were close to  $10^{-12}$  m<sup>2</sup>/s and  $10^{-10}$  m<sup>2</sup>/s respectively, and similar were the constants calculated  
374 for sugars and acids for both vegetables and at both pH. The pH had no effect on folate, sugar  
375 and acid diffusion. At pH 5 and pH 7, the global negative electric charge of malic or citric  
376 acids, has the same polarity as that of cell walls. We can assume the existence of electrostatic  
377 repulsion between the cell walls and sugars and acids resulting in a limitation of diffusion. For  
378 green beans, a difference between the diffusivity constant of citric acid and malic acid of about  
379 a factor of ten was observed, although they are of similar size and charge in the conditions  
380 used. This difference could be due to the nature of the salts which neutralize citric acid which  
381 has a greater ability to complex divalent cations. At pH 5 and pH 7, the overall electrical  
382 charge of folates is also negative (Zhao, Matherly & Goldman, 2009). Thus, it seems that the  
383 assumptions described for sugars and acids are transposable to folates, including the effects of  
384 electrostatic repulsion with cell walls. Moreover, folate interactions with macromolecules such  
385 as proteins could limit their diffusion under these pH conditions. Interaction between folates  
386 and proteins did not seem to be involved in our study because similar diffusivity constant were  
387 obtained for folates and sugars. The pH does not seem to be an important physico-chemical  
388 parameter for the diffusion of sugars, acids and folates.

389 Temperature did not have a significant effect on diffusion of water soluble compounds  
390 whatever matrix was considered but had a significant effect on the residual ratio ( $C_{\infty}/C_0$ )  
391 particularly for folates.

392 Residual levels of folates are lower for spinach (20 % at pH 7 and 10 to 30 % at pH 5) than for  
393 green beans (40 to 70 % at pH 7 and 40 to 60 % at pH 5). This indicates that folates are more  
394 extracted from spinach than from green beans. Spinach and green beans represent two different  
395 tissues, consisting of leaf and pod respectively. Spinach leaves are composed of two layers,  
396 each with only a few cell layers. In contrast, green beans are composed of pods and seeds  
397 parenchyma, which are two different histological structures. The existence of these different  
398 compartments and the possibility that folates are retained in these compartments by bondage to  
399 macromolecules would result in a lower residual ratio and a slower rate of diffusion. In beans,  
400 the existence of a compartmentalization of folates in the parenchyma and in the seeds is clearly  
401 established. This was verified here: folate concentration in the parenchyma was 0.252 mg/kg  
402 while it was three times higher in the seeds with a concentration of 0.709 mg/kg.

403

#### 404 **4.3. Folate thermal degradation**

405 Generally for each temperature, folate degradation kinetics were comparable in spinach and  
406 green beans. For all temperatures, a plateau was reached for both vegetables. The kinetics  
407 neither followed a first order nor a second order reaction, and a first order reaction with a  
408 partial conversion was still not satisfying, for the three temperatures and the two matrixes  
409 studied. This is in contradiction other studies where authors observed total folate degradation  
410 following a first order reaction (Paine-Wilson & Chen, 1979; Mnkeni & Beveridge, 1983; Oey,  
411 Verlinde, Hendrickx & Van Loey, 2006).

412 Two effects could explain this phenomenon: the predominant loss was due to oxidation during  
413 thermal degradation and the second one was due to evolution of each individual derivative and

414 their degradation products during the kinetics. Moreover, folate concentrations in samples from  
415 thermal degradation were determined by HPLC with fluorimetric detection after derivatization.  
416 This could lead to an artifact as it involved conversion of all derivatives to 5-CH<sub>3</sub>-H<sub>4</sub>folate. It  
417 could also convert degradation products formed during the kinetics into 5-CH<sub>3</sub>-H<sub>4</sub>folate, which  
418 would lead to an overestimation of the folate residual ratio.

419

#### 420 **4.4. Thermal degradation and industrial processing**

421 Folate degradation observed in industrial processes (Delchier et al., 2013) appear low  
422 compared to the model systems which could be explained by the difference between the time  
423 considered during the experiments (4 hours) and during processing (few minutes). Moreover,  
424 during sterilization of green beans, the can is a relatively small closed system, with less oxygen  
425 included than in our experiments. During this stage of the process, we observed a slight  
426 degradation of folates by about 10 %. Moreover, the treatment time is 6-15 min, and therefore  
427 relatively short. During blanching, the system behaves similarly to the kinetics of thermal  
428 degradation that we have performed here. During this stage, no losses of folates for both  
429 spinach and green beans were observed (Delchier et al., 2013). The blanching time applied in  
430 industrial processing is relatively short compared to those applied to the kinetics of thermal  
431 degradation (blanching of spinach: 70 s to 120 s; green beans: 4-8 min) (Delchier et al., 2013).  
432 Moreover, the high temperatures used correspond to very low solubilized oxygen content  
433 (Winkler, 1888).

434 Finally, the matrices entering blanching step are not disrupted yet. Thus, the results observed  
435 during industrial blanching are relatively consistent with the conclusions of the kinetics of  
436 thermal degradation.

437

#### 438 **4.5. Integrative model: impact of thermal degradation during diffusion kinetics**

439 The thermal degradation kinetics conducted under the same oxygen conditions as the diffusion  
440 kinetics show residual folate amounts slightly higher at the end of the thermal degradation  
441 kinetics for spinach (diffusion: 35 %, thermal degradation: 40 %) (Fig. 3). In contrast to this, in  
442 green beans, the residual ratio ( $C_{\infty}/C_0$ ) measured at the end of the diffusion kinetics are higher  
443 than those measured at the end of the thermal degradation kinetics (diffusion: 59 % at 45 °C  
444 and 43 % at 65 °C; thermal degradation: 20 % for both temperatures). In addition, residual  
445 ratios are obtained with very different compositions. So it seems that the relative shares of  
446 losses by diffusion and thermal degradation vary according to the vitamers considered.  
447 Moreover, the thermal degradation kinetics were performed on purees obtained from ground  
448 vegetables in cans, where grinding could play a role, either by facilitating the access of oxygen  
449 into puree or by modifying the local environment.

450

## 451 **Conclusion**

452 Our study enabled us to determine folate diffusivity constants, using a novel and efficient  
453 experimental device where neither pH nor temperature had a significant effect on the  
454 diffusivity constant, in contrast to the significant effect of the two vegetables matrices.  
455 Evolution of vitamers during diffusion was dependent on their nature. 5-CH<sub>3</sub>-H<sub>4</sub>folate and folic  
456 acid (PteGlu) were the two main derivatives lost during diffusion. These derivatives are more  
457 stable at pH 5 than at pH 7, so we can not exclude that these derivatives have been degraded  
458 over time, thus reducing the final concentration and inducing an increase in the total amount  
459 extracted. Evolution of derivatives during thermal degradation seems to be a key point for  
460 folate degradation by oxidation, which is why a next step of this study would be to determine  
461 the evolution of vitamers during oxidation in presence of different oxygen conditions.  
462 By contrast, thermal degradation of folates in spinach and green beans was not monotonous  
463 especially at 45 °C and kinetics modelling by a first order with partial conversion was not

464 satisfying yet. Comparison between diffusion and thermal degradation showed that folates were  
465 more sensitive to thermal degradation for green beans, while for spinach diffusion mechanism  
466 appears to be predominant over thermal degradation.

467

#### 468 **Acknowledgements**

469 This work benefited from financial support of ANR-09-ALIA-014 RIBENUT project: New  
470 approaches for microbial risk – nutritional benefits assessment in the case of heat processed  
471 vegetables. It was conducted as part of the UMT "Micronutriments des produits végétaux  
472 transformés" of ACTIA and with the financial support of the Ministère de l'Agriculture, de  
473 l'Alimentation, de la Pêche, de la Ruralité et de l'Aménagement du Territoire.

474 The authors thank Caroline Garcia and Laura Badard for their excellent technical help.

475

476 **References**

- 477 ANSES: Apports Nutritionnels Conseillés en acide folique pour la population Française:  
478 <http://www.anses.fr/Documents/ANC-Ft-TableauVitB9.pdf>, uploaded January 2012.
- 479 Czeizel, A.E., & Dudás, I. (1992). Prevention of the First Occurrence of Neural-Tube Defects  
480 by Periconceptional Vitamin Supplementation. *New England Journal of Medicine*, 327(26),  
481 1832-1835.
- 482 Crank, J. (1975). *The mathematics of diffusion* (2nd ed.). Oxford, London: Clarendon Press.
- 483 Delchier, N., Ringling, C., Le Grandois, J., Aoudé-Werner, D., Galland, R., Georgé, S.,  
484 Rychlik, M., Renard, C.M.G.C. (2013). Effects of industrial processing on folate content in  
485 green vegetables. *Food Chemistry*, 139, 815-824.
- 486 Delchier, N., Reich, M., & Renard C.M.G.C. (2012). Impact of cooking methods on folates,  
487 ascorbic acid and lutein in green beans (*Phaseolus vulgaris*) and spinach (*Spinacea oleracea*).  
488 *LWT - Food Science and Technology*, 49, 197-201.
- 489 DeSouza, S.C., & Eitenmiller, R.R. (1986). Effects of Processing and Storage on the Folate  
490 Content of Spinach and Broccoli. *Journal of Food Science*, 51(3), 626-628.
- 491 Friedman, L., & Kraemer, E. O. (1930). Diffusion of non electrolytes in gelatin gels. *Journal of*  
492 *the American Chemical Society*, 52, 1305.
- 493 Klein, B. P., Lee, H. C., Reynolds, P. A., & Wangles, N. C. (1979). Folacin content of  
494 microwave and conventionally cooked frozen vegetables. *Journal of Food Science*, 44(1), 286-  
495 288.
- 496 Lafay, L. (2009). Etude Individuelle Nationale des Consommations Alimentaires 2(INCA-2).  
497 <http://www.anses.fr/Documents/PASER-Ra-INCA2.pdf>. (in french), uploaded January 2012.
- 498 McKillop, D.J., Pentieva, K., Daly, D., McPartlin, J.M., Hughes, J., Strain, J.J., Scott, J.M., &  
499 McNulty, H. (2002). The effect of different cooking methods on folate retention in various  
500 foods that are amongst the major contributors to folate intake in the UK diet. *British Journal of*  
501 *Nutrition*, 88(06), 681-688.
- 502 Melse-Boonstra, A., Verhoef, P., Konings, E.J.M., van Dusseldorp, M., Matser, A., Hollman,  
503 P.C.H., Meyboom, S., Kok, F.J., & West, C.E. (2002). Influence of Processing on Total,  
504 Monoglutamate and Polyglutamate Folate Contents of Leeks, Cauliflower, and Green Beans.  
505 *Journal of Agricultural and Food Chemistry*, 50(12), 3473-3478.
- 506 Mnkeni, A. P., & Beveridge, T. (1983). Thermal destruction of 5-methyltetrahydrofolic acid in  
507 buffer and model food systems. *Journal of Food Science*, 48(2), 595-599.
- 508 Oey, I., Verlinde, P., Hendrickx, M., & Van Loey, A. (2006). Temperature and pressure  
509 stability of L-ascorbic acid and/or [6s]5-methyltetrahydrofolic acid: A kinetic study. *European*  
510 *Food Research and Technology*, 223(1), 71-77.
- 511 Paine-Wilson, B., & Chen, T.S. (1979). Thermal destruction of folacin: effect of pH and buffer  
512 ions. *Journal of Food Science*, 44(3), 717-722.

- 513 Robinson, K. (2000). Homocysteine, B vitamins, and risk of cardiovascular disease. *Heart*,  
514 83(2), 127-130.
- 515 Ringling, C., & Rychlik, M. (2013). Analysis of seven folates in food by LC-MS/MS to  
516 improve accuracy of total folate data. *European Food Research and Technology*, 236, 17-28.
- 517 Schwartzberg, H. G., & Chao, R. Y. (1982). Solute diffusivities in leaching processes. *Journal*  
518 *of Food Technology*, 36, 74-77.
- 519 Snowdon, D.A., Tully, C.L., Smith, C.D., Riley, K.P., & Markesbery, W.R. (2000). Serum  
520 folate and the severity of atrophy of the neocortex in Alzheimer disease: findings from the Nun  
521 Study. *The American Journal of Clinical Nutrition*, 71(4), 993-998.
- 522 Vukov, K., & Monzpart Senyi, J. (1977). Saftgewinnung aus Zuckerruben und Äpfeln durch  
523 Gegenstromextraktion. *Z. Zuckerind*, 27(8).
- 524 Winkler, L.W. (1888). Die Bestimmung des im Wasser gelösten Sauerstoffes. *Berichte der*  
525 *Deutschen Chemischen Gesellschaft*, 21, 2843-2855.
- 526 Zhao, R., Matherly, L. H., & Goldman, I. D. (2009). Membrane transporters and folate  
527 homeostasis: intestinal absorption and transport into systemic compartments and tissues. *Expert*  
528 *Reviews in Molecular Medicine*, 11, 1-28.
- 529

530 **Figure Captions**

531 **Fig. 1. Folates' thermal degradation in spinach and green beans purees**

532 The left part of the graphic represents the thermal degradation of total folates expressed as folic  
533 acid in mg/kg of fresh weight at 45 °C (A), 65 °C (B) and 85 °C (C) in spinach under  
534 atmospheric oxygen conditions. The right part of the graphic represent the thermal degradation  
535 of total folates (mg/kg of fresh weight) at 45 °C (D), 65 °C (E) and 85 °C (F) under  
536 atmospheric oxygen conditions in green beans. Empty lozenges correspond to data from batch  
537 1 and empty squares represent data from batch 2.

538

539 **Fig. 2. Folate diffusion from spinach and green beans**

540 On the left graphic (A) experimental and modelling data for folate diffusion from spinach at pH  
541 7 and 45 °C are presented and on the right graphic (B) the respective data for folate diffusion  
542 from green beans at pH 7 and 65 °C. Experimental concentrations of folates during diffusion  
543 are expressed in mg/kg of fresh weight in equivalent 5-CH<sub>3</sub>-H<sub>4</sub>folate monoglutamate and  
544 represented by full lozenges. Concentrations determined by second Fick's law model are  
545 represented by the dotted line. Right graph (A)

546

547 **Fig.3. Model of folate losses from spinach and green beans: diffusion vs thermal**  
548 **degradation**

549 Folate  $C/C_0$  evolution over time both for diffusion + thermal degradation and for thermal  
550 degradation are represented by full triangle and empty squares respectively. On the top data for  
551 spinach at 45 °C (A) and 65 °C (B) are presented and on the bottom the respective data for  
552 green beans at 45 °C (C) and 65 °C (D).

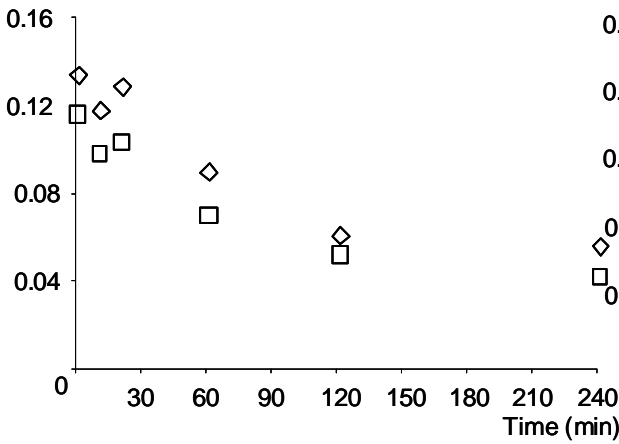
553



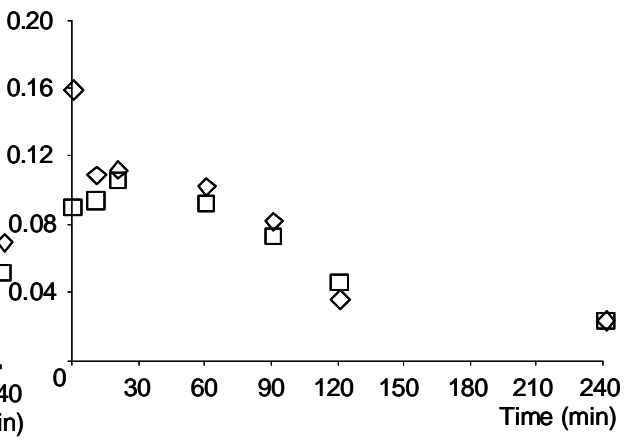
554 Fig.1. Delchier et al.

555  
556  
557  
558  
559  
560  
561  
562  
563  
564  
565  
566  
567  
568  
569  
570  
571  
572  
573  
574  
575  
576  
577  
578  
579  
580  
581  
582  
583  
584  
585  
586  
587  
588

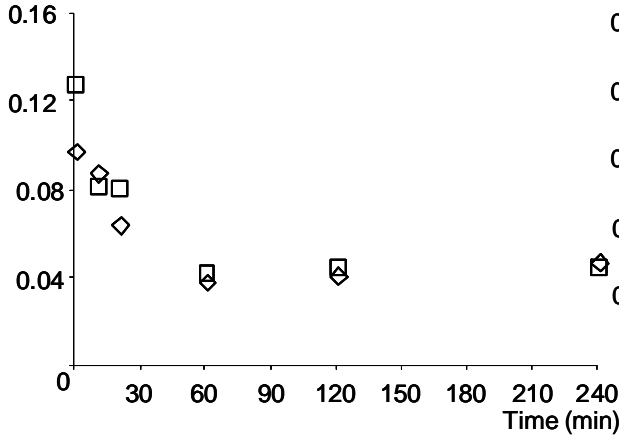
**A : 45 °C**  
mg.kg<sup>-1</sup> as Folic acid



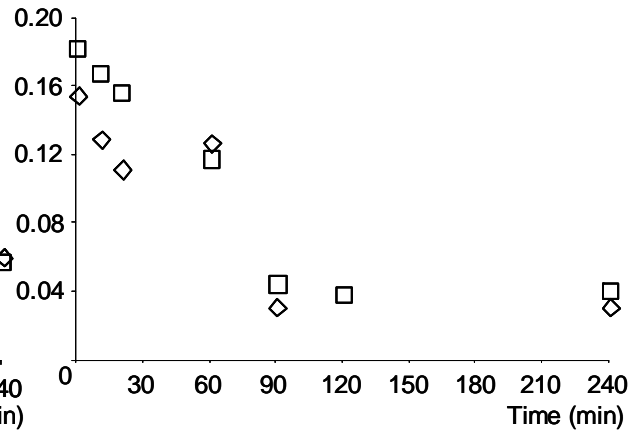
**D : 45 °C**  
mg.kg<sup>-1</sup> as Folic acid



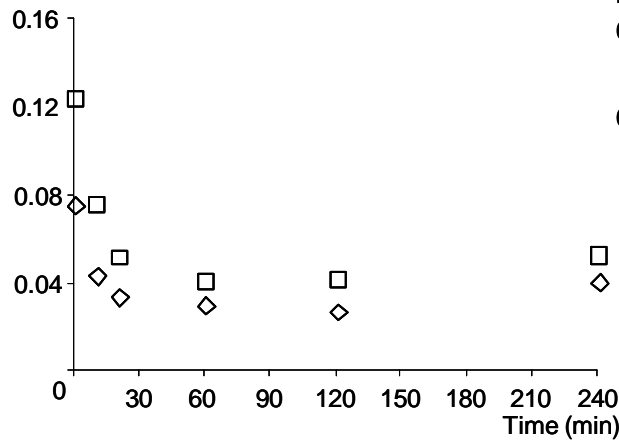
**B : 65 °C**  
mg.kg<sup>-1</sup> as Folic acid



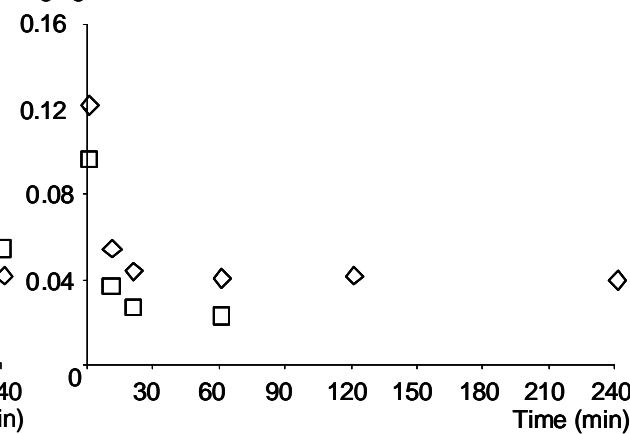
**E : 65 °C**  
mg.kg<sup>-1</sup> as Folic acid



**C : 85 °C**  
mg.kg<sup>-1</sup> as Folic acid



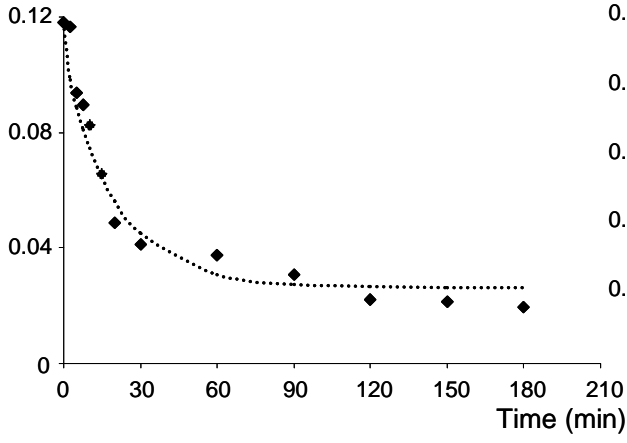
**F : 85 °C**  
mg.kg<sup>-1</sup> as Folic acid



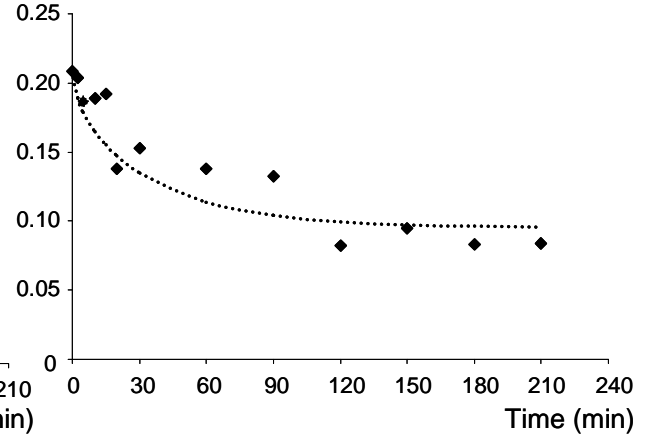
589 Fig.2. Delchier et al.

590  
591  
592  
593  
594  
595  
596  
597  
598  
600  
601  
602  
603  
604  
605  
606  
607  
608  
609  
610  
611  
612

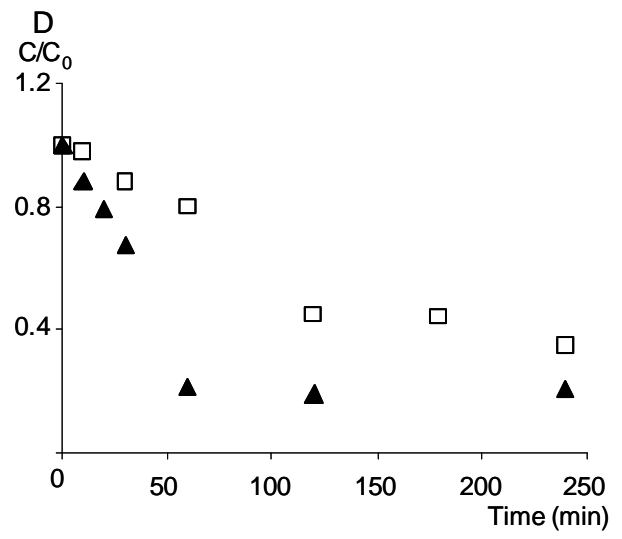
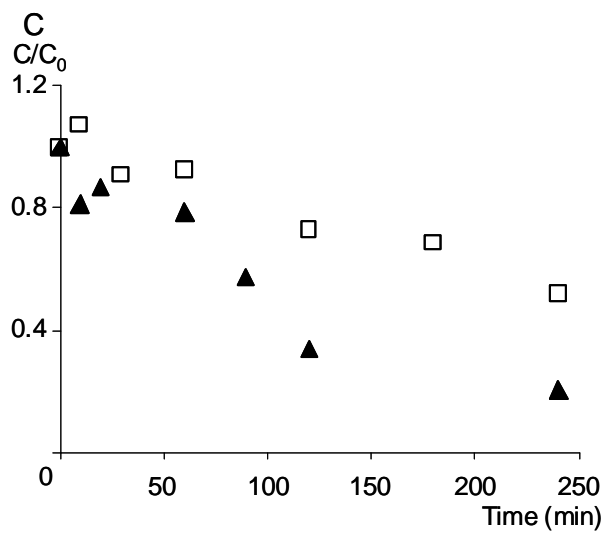
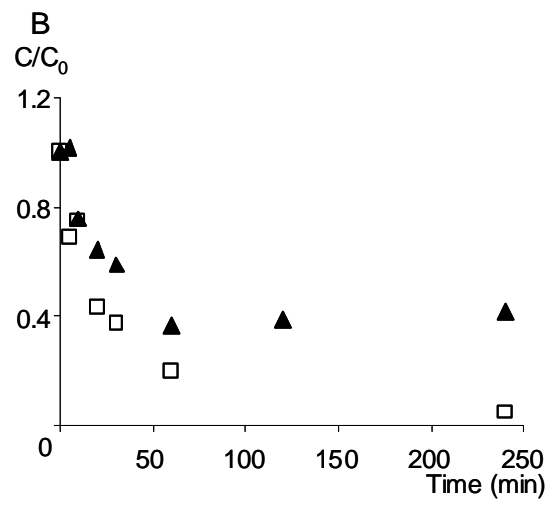
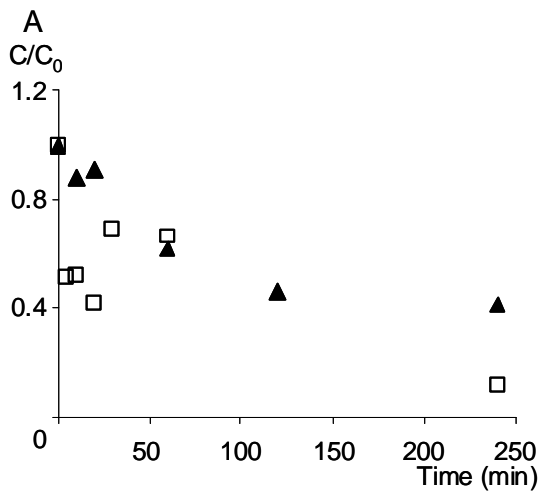
A  
mg.kg<sup>-1</sup> (FW)  
as 5-CH<sub>3</sub>-H<sub>4</sub>folate



B  
mg.kg<sup>-1</sup> (FW)  
as 5-CH<sub>3</sub>-H<sub>4</sub>folate



613 Fig.3. Delchier et al.  
614



**Table 1:** Diffusivity and C/C<sub>0</sub> of folates, sugars and acids in spinach and green beans

	pH	T	Folates		Glucose		Fructose		Sucrose		Malic acid		Citric acid	
			D	C/C <sub>0</sub>	D	C/C <sub>0</sub>	D	C/C <sub>0</sub>	D	C/C <sub>0</sub>	D	C/C <sub>0</sub>	D	C/C <sub>0</sub>
Spinach	7	25	$7 \pm 2.1 \cdot 10^{-12}$	$0,28 \pm 0.07$	$3.0 \cdot 10^{-12}$	0.50	-	-	-	-	$3,5 \cdot 10^{-12}$	0,49	-	-
		45	$7 \pm 1.7 \cdot 10^{-12}$	$0,23 \pm 0.03$	$1.0 \cdot 10^{-11}$	0.30	-	-	-	-	$6,0 \cdot 10^{-12}$	0,19	-	-
		65	$6 \pm 1.1 \cdot 10^{-12}$	$0,28 \pm 0.12$	-	0.86	-	-	-	-	$2,5 \cdot 10^{-11}$	0,52	-	-
	5	25	$6 \pm 2.1 \cdot 10^{-12}$	$0,33 \pm 0.01$	$6,0 \cdot 10^{-12}$	0,54	-	-	-	-	$3,5 \cdot 10^{-12}$	0,57	-	-
		45	9		$0,38 \pm 0.14$	$8,0 \cdot 10^{-12}$	0,02	-	-	-	$5,5 \cdot 10^{-12}$	0,55	-	-
		65	$8 \pm 1.4 \cdot 10^{-12}$	$0,12 \pm 0.04$	$9,5 \cdot 10^{-12}$	0,27	-	-	-	-	$2,5 \cdot 10^{-11}$	0,27	-	-
Green beans	7	25	$7 \pm 1.1 \cdot 10^{-10}$	$0,73 \pm 0.03$	$3,0 \cdot 10^{-10}$	0,61	$1,5 \cdot 10^{-10}$	0,57	$1,0 \cdot 10^{-09}$	0,51	$1,0 \cdot 10^{-09}$	0,87	$9,0 \cdot 10^{-09}$	0,05
		45	$8 \pm 1.7 \cdot 10^{-10}$	$0,70 \pm 0.06$	$3,0 \cdot 10^{-10}$	0,52	$1,5 \cdot 10^{-10}$	0,55	$2,5 \cdot 10^{-10}$	0,51	$5,0 \cdot 10^{-10}$	0,44	$9,0 \cdot 10^{-09}$	0,06
		65	$6 \pm 2.0 \cdot 10^{-10}$	$0,41 \pm 0.04$	$2,5 \cdot 10^{-10}$	0,39	$6,0 \cdot 10^{-10}$	0,39	$5,0 \cdot 10^{-09}$	0,63	$2,5 \cdot 10^{-10}$	0,36	$5,0 \cdot 10^{-09}$	0,03
	5	25	-		$1,7 \cdot 10^{-10}$	0,71	$3,0 \cdot 10^{-10}$	0,75	$1,0 \cdot 10^{-07}$	0,61	$5,0 \cdot 10^{-10}$	0,75	$4,0 \cdot 10^{-09}$	0,07
		45	$5 \pm 1.4 \cdot 10^{-10}$	$0,59 \pm 0.08$	$1,5 \cdot 10^{-10}$	0,48	$2,1 \cdot 10^{-10}$	0,43	$5,0 \cdot 10^{-10}$	0,44	$3,5 \cdot 10^{-10}$	0,51	$5,0 \cdot 10^{-09}$	0,06
		65	3		0,43	$1,5 \cdot 10^{-10}$	0,47	$2,0 \cdot 10^{-10}$	0,38	$5,0 \cdot 10^{-10}$	0,55	$2,0 \cdot 10^{-10}$	0,48	$5,0 \cdot 10^{-09}$

D corresponds to the diffusivity constant calculate for folates, Glucose, fructose, Sucrose, Malic acid and Citric acid in  $m^2 \cdot s^{-1}$ . For folates diffusivity constant, results are expressed as mean  $\pm$  standard deviation.

C/C<sub>0</sub> corresponds to the residual concentration calculate for folates, Glucose, fructose, Sucrose, Malic acid and Citric acid. For folates, C/C<sub>0</sub> is expressed as mean  $\pm$  standard deviation.

Diffusivity constant for folates was calculated from concentrations expressed as 5-CH<sub>3</sub>-H<sub>4</sub>folate monoglutamate (after conversion of all derivatives)

T corresponds to the temperature in degree Celsius.

615 Table 2: Residual concentration of folate derivatives in spinach during diffusion kinetics

pH	°C	Time	5-CH <sub>3</sub> - H <sub>4</sub> folate	5-HCO- H <sub>4</sub> folate	10- HCO- PteGlu	H <sub>4</sub> folate	PteGlu	5,10- CH <sup>+</sup> - H <sub>4</sub> folate	10- HCO- H <sub>2</sub> folate	Total folates (as folic acid)
7	25	t <sub>0</sub>	0,302	0,057	0,022	0,015	0,003	0,003	0,010	0,395
		t <sub>180</sub>	0,069	0,007	0,005	0,001	0,001	0,000	0,003	0,083
		C/C <sub>0</sub>	0,22	0,12	0,24	0,07	0,35	0,07	0,26	0,21
	45	t <sub>0</sub>	0,189	0,010	0,027	0,004	0,001	0,000	0,010	0,230
		t <sub>240</sub>	0,017	0,002	0,003	0,001	0,001	0,000	0,001	0,024
		C/C <sub>0</sub>	0,09	0,18	0,12	0,41	0,58	0,42	0,07	0,11
	65	t <sub>0</sub>	0,137	0,027	0,020	0,005	0,002	0,001	0,010	0,193
		t <sub>240</sub>	0,002	0,001	0,001	0,000	0,001	0,000	0,000	0,005
		C/C <sub>0</sub>	0,01	0,05	0,06	∅	0,31	∅	∅	0,03
5	25	t <sub>0</sub>	0,280	0,064	0,013	0,012	0,002	0,002	0,003	0,361
		t <sub>240</sub>	0,102	0,056	0,011	0,004	0,002	0,002	0,003	0,171
		C/C <sub>0</sub>	0,36	0,86	0,86	0,33	0,76	0,85	0,86	0,48
	45	t <sub>0</sub>	0,344	0,109	0,008	0,039	0,002	0,003	0,002	0,484
		t <sub>240</sub>	0,051	0,045	0,008	0,002	0,002	0,000	0,002	0,105
		C/C <sub>0</sub>	0,14	0,41	1,08	0,05	0,81	0,02	1,24	0,22
	65	t <sub>0</sub>	0,350	0,126	0,009	0,035	0,003	0,003	0,003	0,506
		t <sub>240</sub>	0,002	0,036	0,013	0,002	0,001	0,000	0,001	0,052
		C/C <sub>0</sub>	0,007	0,28	1,41	0,05	0,48	0,01	0,41	0,10

616 Results are expressed in mg kg<sup>-1</sup> of fresh weight, in blanched spinach (t<sub>0</sub>) and blanched  
 617 spinach after diffusion (t<sub>180</sub> or t<sub>240</sub>).

618 C/C<sub>0</sub> is the ratio between the initial concentration and the final concentration.

619 °C corresponds to the temperature in degree Celsius.

620

621

622

623 Table 3: Residual concentration of folate derivatives in green beans during diffusion kinetics

624  
625

pH	°C	Time	5-CH <sub>3</sub> - H <sub>4</sub> folate	5-HCO- H <sub>4</sub> folate	10- HCO- PteGlu	H <sub>4</sub> folate	PteGlu	5,10- CH <sup>+</sup> - H <sub>4</sub> folate	10- HCO- H <sub>2</sub> folate	Total folates (as folic acid)
7	25	t <sub>0</sub>	0,543	0,13	0,042	0,028	0,66	0,008	0,020	1,404
		t <sub>210</sub>	0,353	0,07	0,038	0,005	0,001	0,002	0,014	0,465
		C/C <sub>0</sub>	0,65	0,54	0,91	0,18	0,21	0,28	0,69	0,33
	45	t <sub>0</sub>	0,517	0,06	0,058	0,016	0,002	0,003	0,026	0,651
		t <sub>240</sub>	0,216	0,04	0,043	0,009	0,002	0,003	0,015	0,315
		C/C <sub>0</sub>	0,43	0,41	0,73	0,73	0,55	0,81	1,02	0,56
	65	t <sub>0</sub>	0,330	0,06	0,060	0,009	0,001	0,002	0,020	0,463
		t <sub>240</sub>	0,027	0,04	0,039	0,007	0,002	0,006	0,012	0,128
		C/C <sub>0</sub>	0,08	0,67	0,65	0,80	2,35	2,36	0,59	0,28
5	25	t <sub>0</sub>	0,342	0,07	0,032	0,014	0,001	0,002	0,009	0,449
		t <sub>180</sub>	0,362	0,07	0,036	0,005	0,001	0,002	0,013	0,464
		C/C <sub>0</sub>	1,05	0,97	1,13	0,35	0,74	1,10	1,37	1,03
	45	t <sub>0</sub>	0,541	0,07	0,039	0,012	0,001	0,003	0,021	0,661
		t <sub>240</sub>	0,112	0,05	0,037	0,008	0,002	0,000	0,007	0,210
		C/C <sub>0</sub>	0,20	0,74	0,92	0,63	1,38	0,10	0,35	0,32
	65	t <sub>0</sub>	0,448	0,09	0,040	0,014	0,001	0,003	0,013	0,582
		t <sub>240</sub>	0,008	0,05	0,048	0,003	0,001	0,000	0,004	0,104
		C/C <sub>0</sub>	0,01	0,52	1,20	0,22	0,92	0,04	0,27	0,18

626

627 Results are expressed in mg kg<sup>-1</sup> of fresh weight, in blanched green beans (t<sub>0</sub>) and blanched  
628 green beans after diffusion (t<sub>180</sub> or t<sub>240</sub>).

629 C/C<sub>0</sub> is the ratio between the initial concentration and the final concentration.

630 °C corresponds to the temperature in degree Celsius.

631

632

633