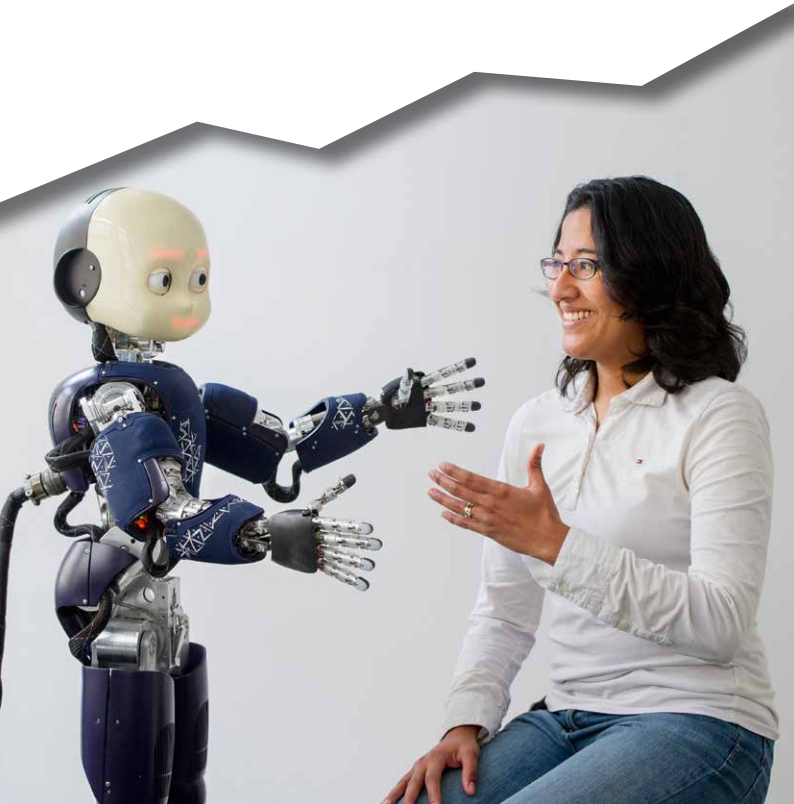


# Facts & Figures 2015/16





AlgaeTec facility

The Technical University of Munich (TUM) is one of Europe's leading universities for research with a range of disciplines, unparalleled in Germany, including engineering and natural sciences, life sciences and medicine, management and social sciences. TUM takes advantage of this breadth to create interdisciplinary structures in both research and teaching. After all, it is only through collaboration between disciplines that the great challenges of the 21st century can be overcome. TUM focuses on the following future-oriented fields:

- Energy & Natural Resources
- Environment & Climate
- Health & Nutrition
- Mobility & Infrastructure
- Information & Communications

At the same time, TUM addresses the decisive issues surrounding the social aspects of new technologies.

TUM is an entrepreneurial university that fosters individuals' gifts and cultivates the diversity of talents – at all levels, from first-year students to leading scientists. TUM is international, both on its campuses in Bavaria and at its locations around the world.

Ever since pioneering engineers like Carl von Linde and Rudolf Diesel paved the way for ground-breaking innovations at TUM in the 19th century, technology transfer has been one of the university's central goals – for the lasting benefit of mankind.

## Departments & Integrative Research Centers

### Munich

- Architecture
- Civil, Geo and Environmental Engineering
- Electrical and Computer Engineering
- Sport and Health Sciences
- TUM School of Education
- TUM School of Management
- TUM School of Medicine
- Munich Center for Technology in Society

### Garching

- Chemistry
- Informatics
- Mathematics
- Mechanical Engineering
- Physics
- Munich School of Engineering
- TUM Institute for Advanced Study

### Freising

- TUM School of Life Sciences Weihenstephan

## Further Locations in Bavaria



## TUM Branches

### 1 TUM Asia, Singapore

first campus of a German university abroad

### 2 EuroTech Universities Alliance (Brussels)

Technical University of Denmark - DTU

École polytechnique fédérale de Lausanne - EPFL

Eindhoven University of Technology - TU/e TUM

### 3 TUM Office Beijing

### 4 TUM Office Cairo

### 5 TUM Office Mumbai

### 6 TUM Office San Francisco

### 7 TUM Office São Paulo

## North America

19 partner universities

## Central and South America

23 partner universities

## Europe

36 partner universities, additional 320 Erasmus partnerships

## Africa

10 partner universities

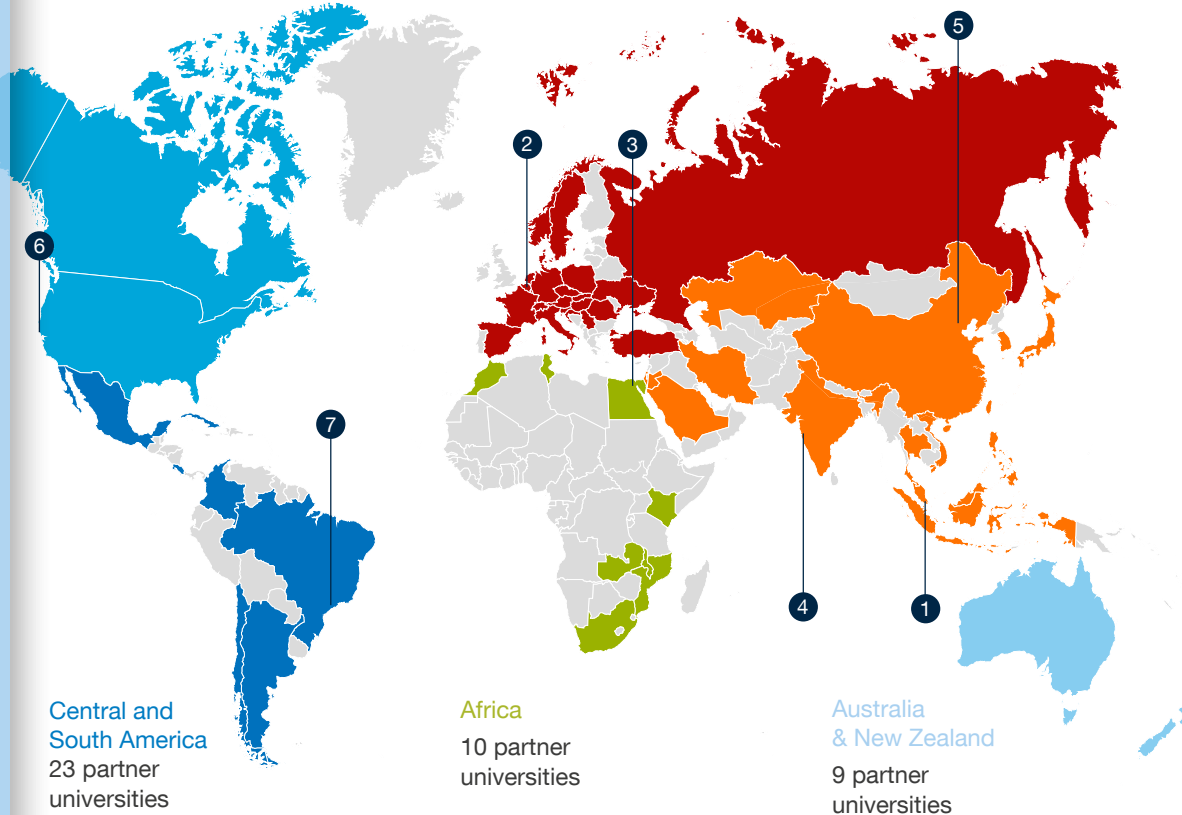
## Asia

64 partner universities

## Australia & New Zealand

9 partner universities

## TUM International



## Students & Programs

<b>Students</b>	<b>39,081</b>
<i>among these</i>	
Women	34 %
<b>International students</b>	<b>8,774</b>
<i>among these</i>	
1. China	1,117
2. Austria	723
3. Italy	561
4. India	558
5. Turkey	507
<b>Graduates 2015</b>	<b>8,911</b>
<b>Programs</b>	<b>160</b>
<i>among these</i>	
Bachelor	43
Master	97
English-language programs	24
<b>Programs at TUM Asia in Singapore</b>	<b>8</b>



Students of architecture

## TUM Members & Alumni

<b>Professors</b>	<b>528</b>
(including university hospital)	
<i>among these</i>	
from abroad	16 %
Women	17 %
<b>New appointments 2015</b>	<b>44</b>
<i>among these</i>	
from institutions abroad	41 %
<b>Research and teaching staff</b>	<b>6,142</b>
(including university hospital)	
<i>among these</i>	
from abroad	20 %
Women	34 %
<b>Other staff</b>	<b>3,207</b>
(not-including university hospital)	
<i>among these</i>	
Women	58 %
<b>Members of Alumni Network</b>	<b>54,476</b>



Publications in scientific journals 2015  
(Source: Scopus database)

6,104

Doctorates 2015

1,021

Participation in DFG Collaborative  
Research Centers (SFBs)

22

among these

SFBs with TUM spokespersons

7

European Research Council Grants since 2008

51

Patents first filed in 2015

69

Total budget 2014

(including university hospital)

1,257.9 M euros

thereof

State of Bavaria

564.4 M euros

Revenue

415.5 M euros

Raised external funds

276.0 M euros

thereof

DFG

86.7 M euros

German Federal Government

59.4 M euros

Private enterprise

44.9 M euros

Other private donors

30.4 M euros

State of Bavaria

17.7 M euros

EU

17.3 M euros

Foundations

11.0 M euros

Founders of endowed professorships

8.6 M euros

Data as of April 15, 2016, unless otherwise stated



Inorganic chemistry laboratory

13 Nobel Laureates have done research and taught at TUM, among them:



**Heinrich Otto Wieland** (1887-1957)  
1927 Nobel Prize in Chemistry



**Hans Fischer** (1881-1945)  
1930 Nobel Prize in Chemistry



**Rudolf Mößbauer** (1929-2011)  
1961 Nobel Prize in Physics



**Ernst Otto Fischer** (1918-2007)  
1973 Nobel Prize in Chemistry



**Klaus von Klitzing** (\* 1943)  
1985 Nobel Prize in Physics



**Robert Huber** (\* 1937)  
1988 Nobel Prize in Chemistry

### **Emil Erlenmeyer**

(1825-1909)

Chemist

Discoverer of chemical  
multiple bonding

### **Carl von Linde**

(1842-1934)

Inventor of refrigeration  
technology

Founder of Linde AG

### **Oskar von Miller**

(1855-1934)

Hydroelectric and  
high-voltage pioneer

Founder of Deutsches  
Museum München

### **Rudolf Diesel**

(1858-1913)

Inventor of compression-  
ignition engine

### **Walther Meißner**

(1882-1974)

Low-temperature scientist

### **Claude Dornier**

(1884-1969)

Aircraft engineer

### **Willy Messerschmitt**

(1898-1978)

Aircraft engineer

### **Heinz Maier-Leibnitz**

(1911-2000)

Nuclear physicist

Initiator of Germany's  
first research reactor

### **Arne Skerra**

(\* 1961)

Scientist of protein  
engineering

Inventor of a new species  
of receptor proteins

### **Thomas Scheibel**

(\* 1969)

Biochemist

Synthesis of artificial  
spider silk

- 1868 Founding of Polytechnische Schule München  
by King Ludwig II
- 1877 Renamed Technische Hochschule München
- 1901 Granted right to award doctorates
- 1930 Integration of Hochschule für Landwirtschaft  
und Brauerei, Weihenstephan
- 1957 Construction of research reactor (“atomic egg”),  
first TUM institution in Garching
- 1967 Founding of TUM School of Medicine
- 1970 Renamed Technische Universität München
- 2000 Founding of TUM School of Life Sciences  
Weihenstephan
- 2002 Founding of Department of Sport and Health Sciences  
Founding of TUM School of Management  
Founding of TUM Asia, Singapore
- 2004 Opening of Heinz Maier-Leibnitz neutron source
- 2005 Founding of Institute for Advanced Study (IAS)
- 2006 TUM achieves German “University of Excellence” status
- 2009 Founding of TUM School of Education  
Founding of Munich School of Engineering
- 2010 Founding of TUM University Foundation
- 2012 TUM’s “University of Excellence” status renewed  
Founding of Munich Center for Technology in Society
- 2015 11th place worldwide in „Global Employability University  
Ranking“  
Best German university in „QS World University Ranking“  
Most innovative German university in „Reuters Top 100  
World’s Most Innovative Universities“

### Technische Universität München

Arcisstraße 21  
80333 München  
Germany  
[www.tum.de](http://www.tum.de)

### Corporate Communications Center

Phone: +49.89.289.22778  
[presse@tum.de](mailto:presse@tum.de)

### Student Service Center

Student Advising  
Phone: +49.89.289.22737  
[studium@tum.de](mailto:studium@tum.de)

### Publishing Details

<b>Publisher</b>	TUM, Corporate Communications Center
<b>Editorial work</b>	Klaus Becker, TUM
<b>Photos</b>	Andreas Heddergott, TUM Astrid Eckert, TUM
<b>Layout</b>	Christine Sturz, TUM
<b>printed by</b>	Walch, Augsburg April 2016



